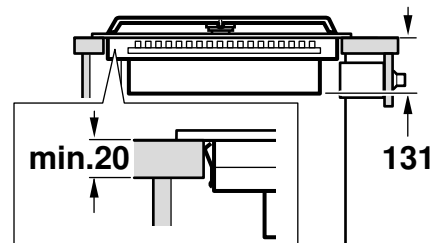
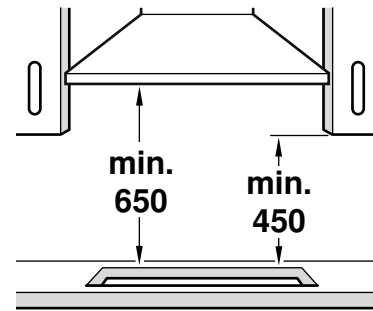
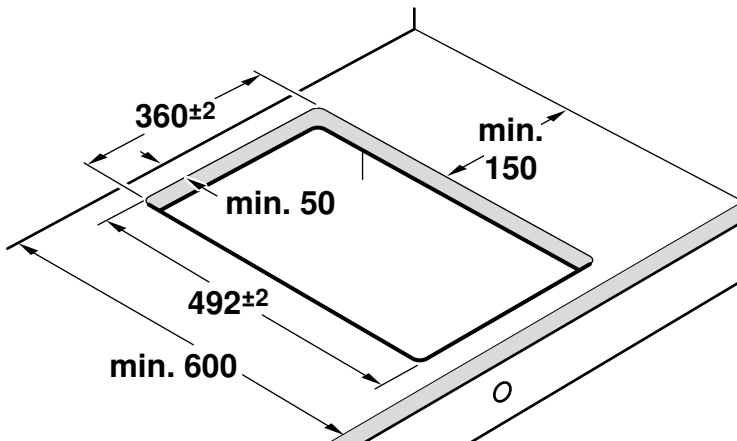
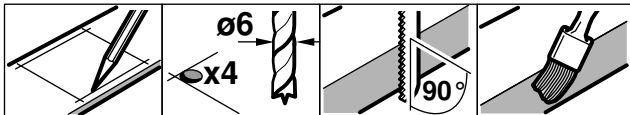
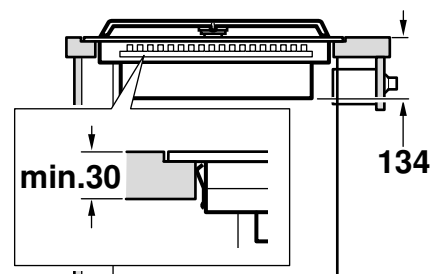
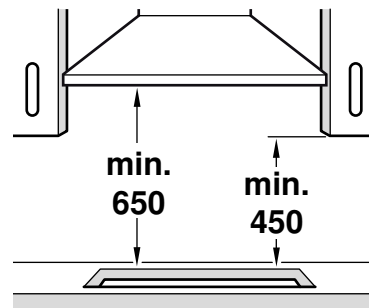
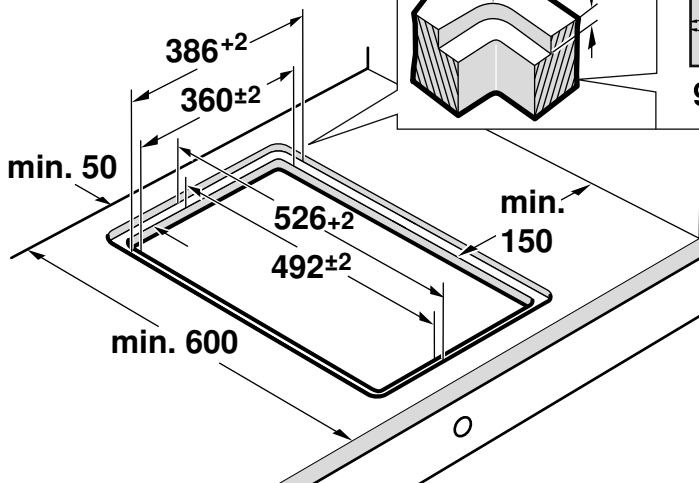
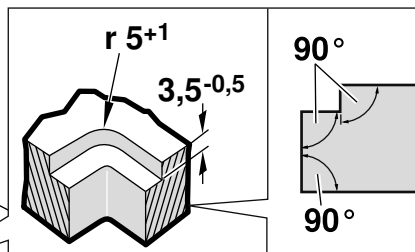


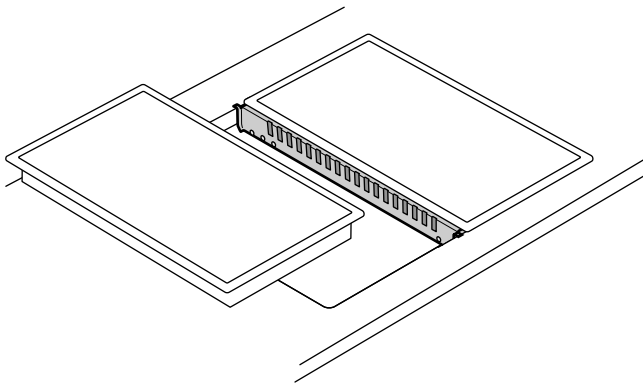
1a



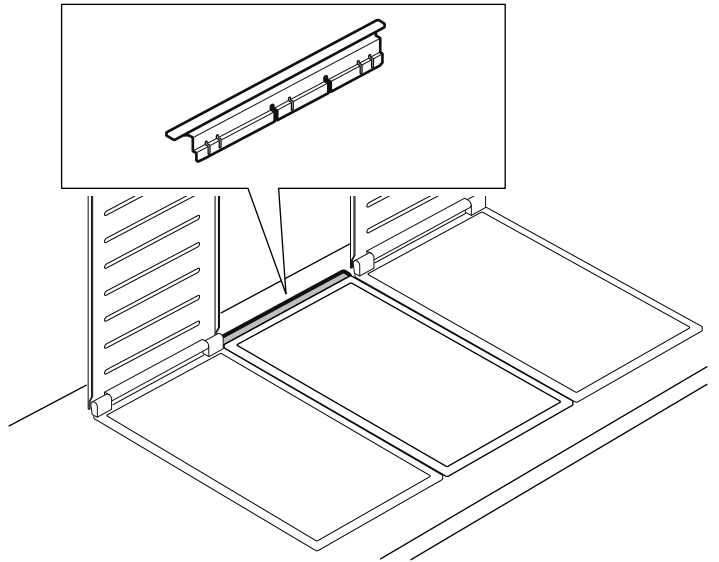
1b



1c

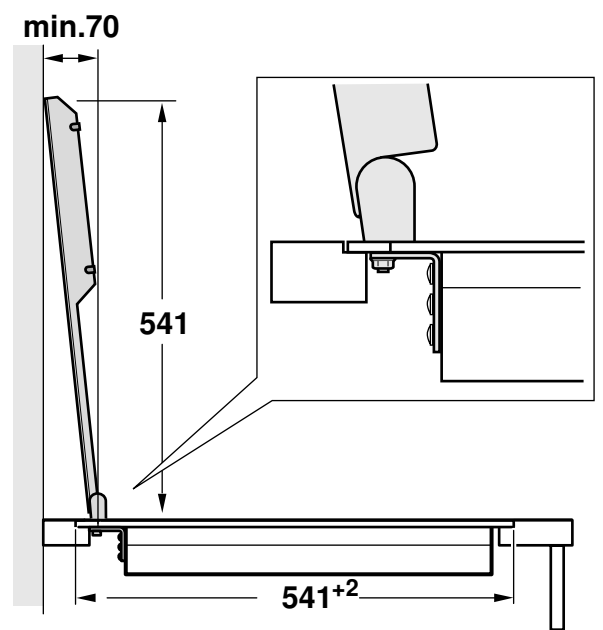
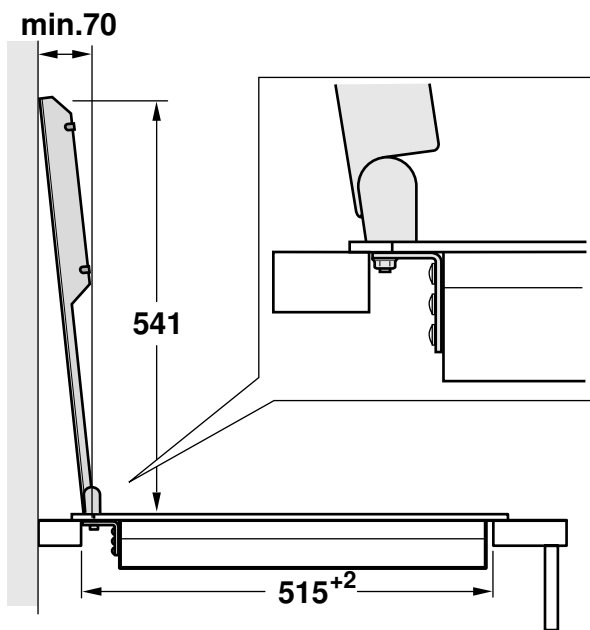


VA 420 000/001/010/011

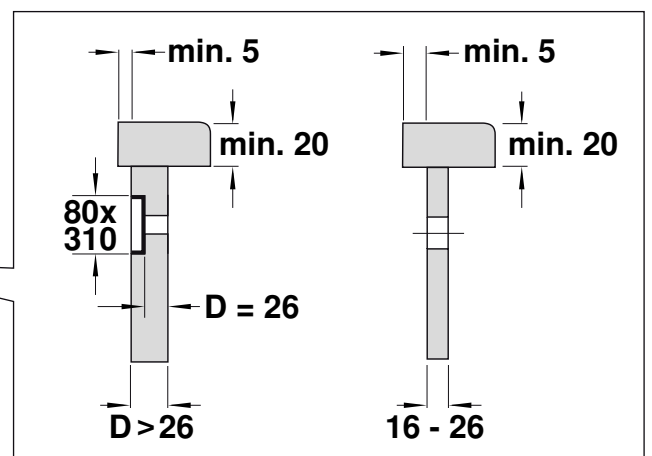
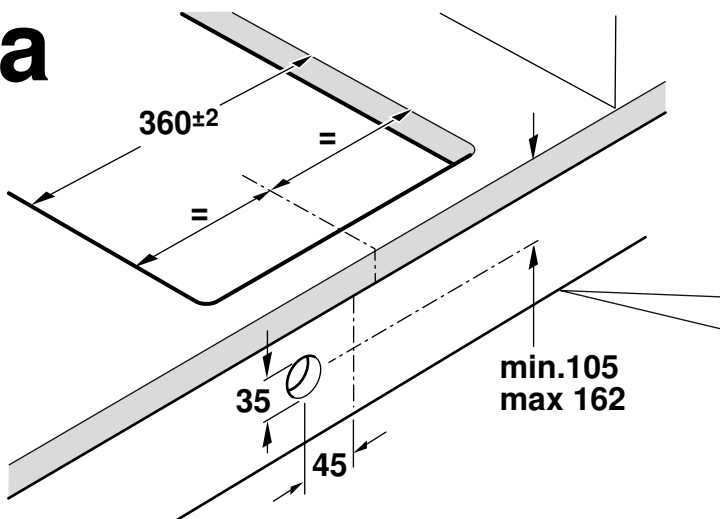


VA 450 110/-400/-600/-800/-900

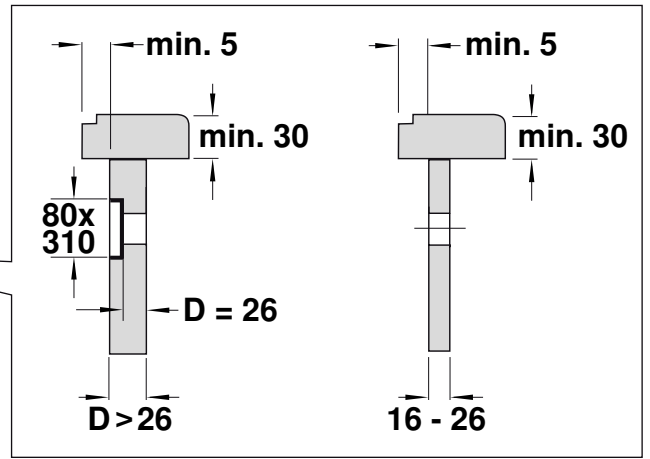
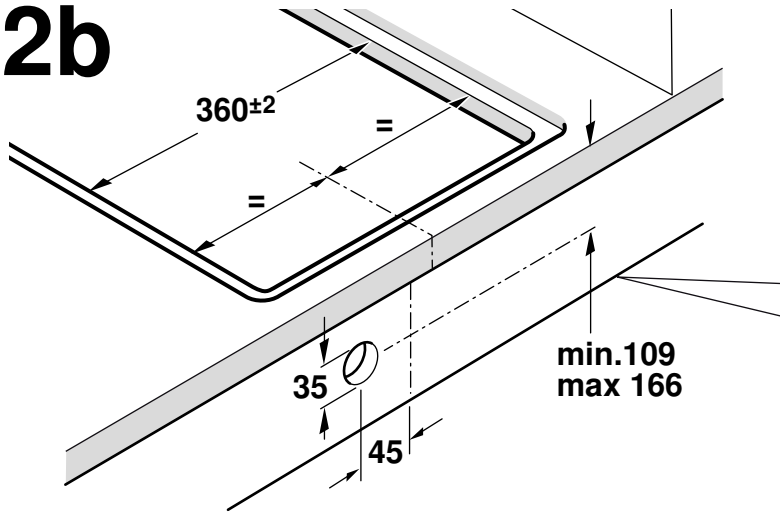
1d



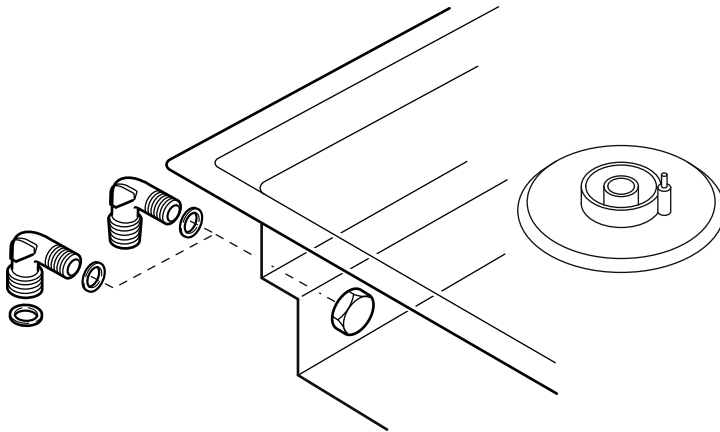
2a



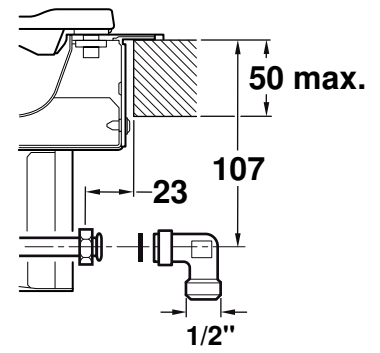
2b



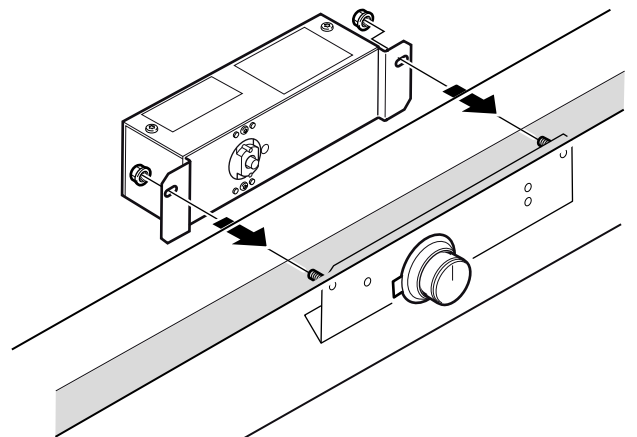
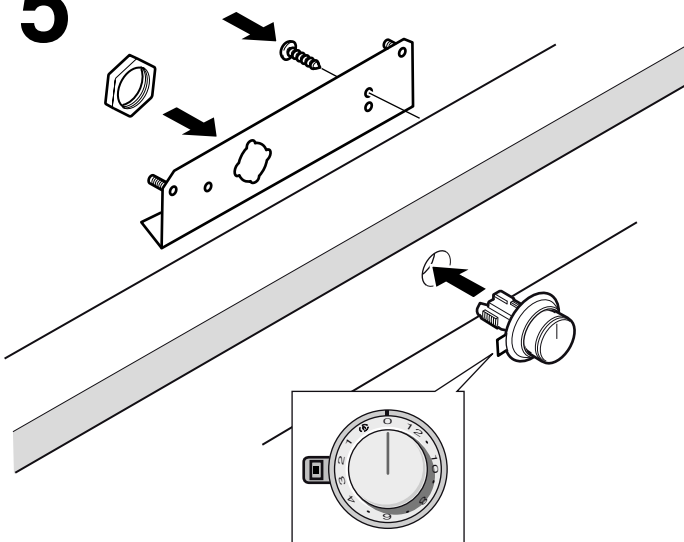
3



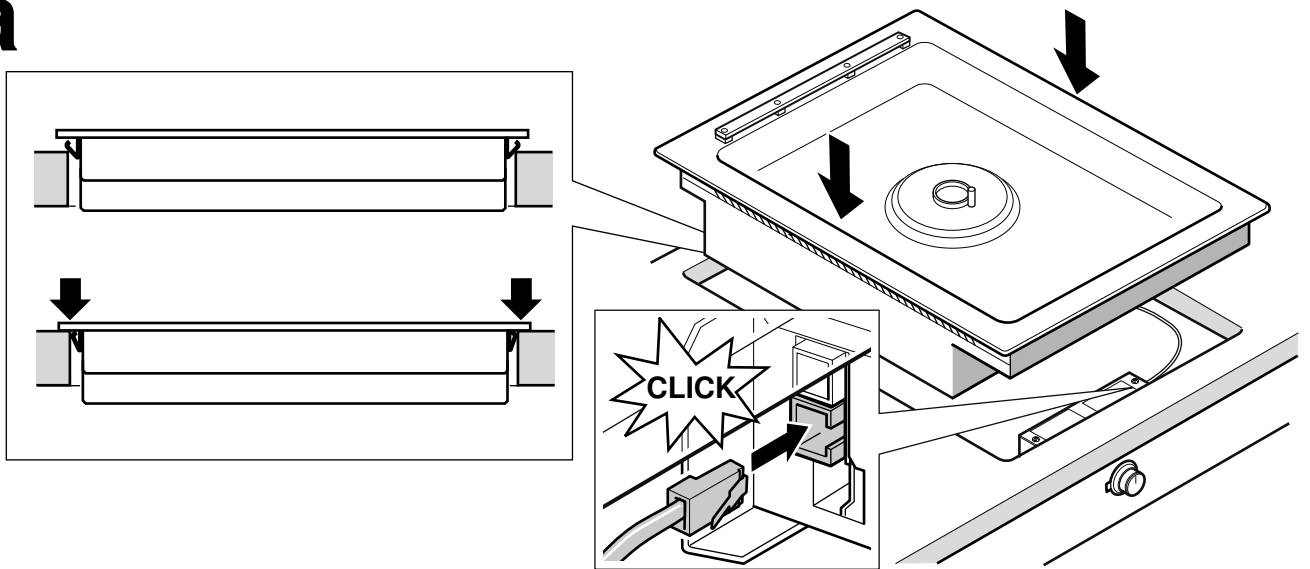
4



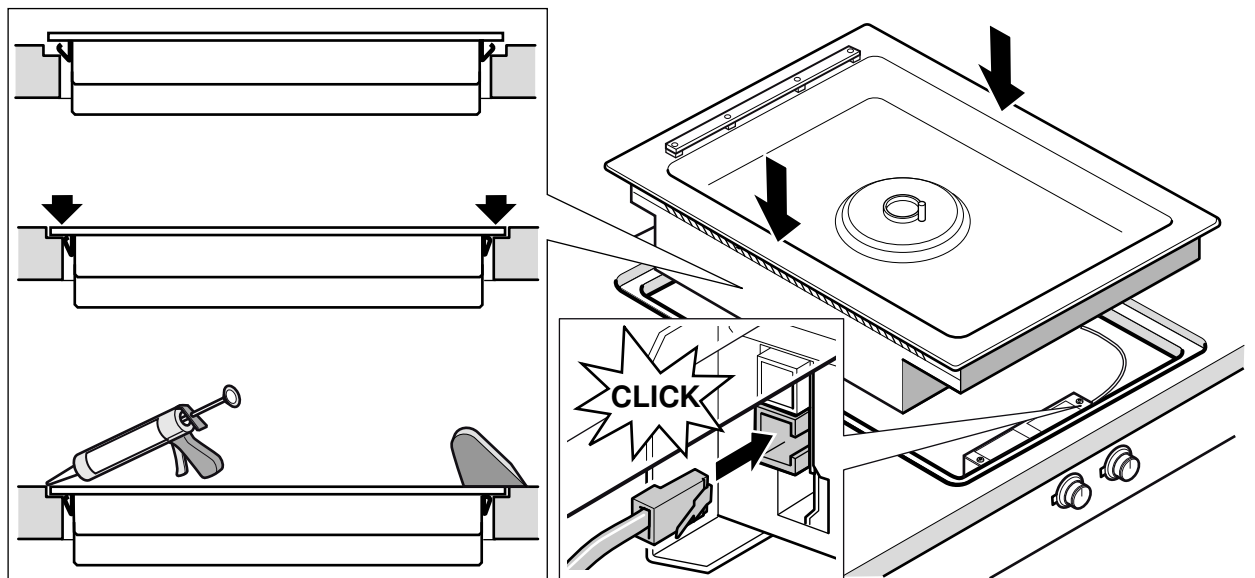
5



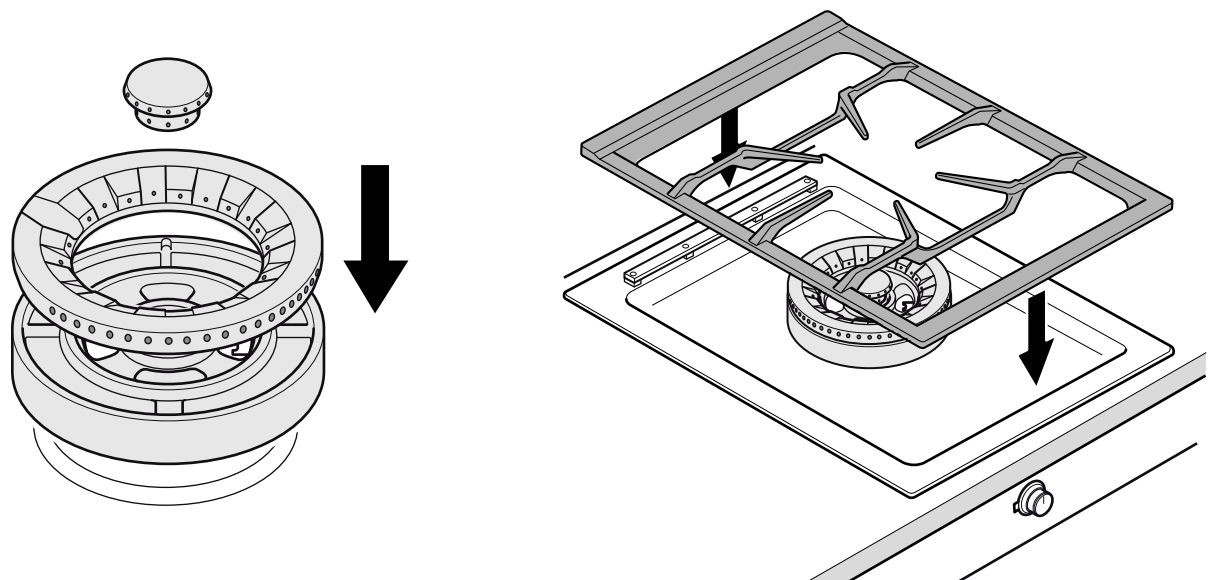
6a



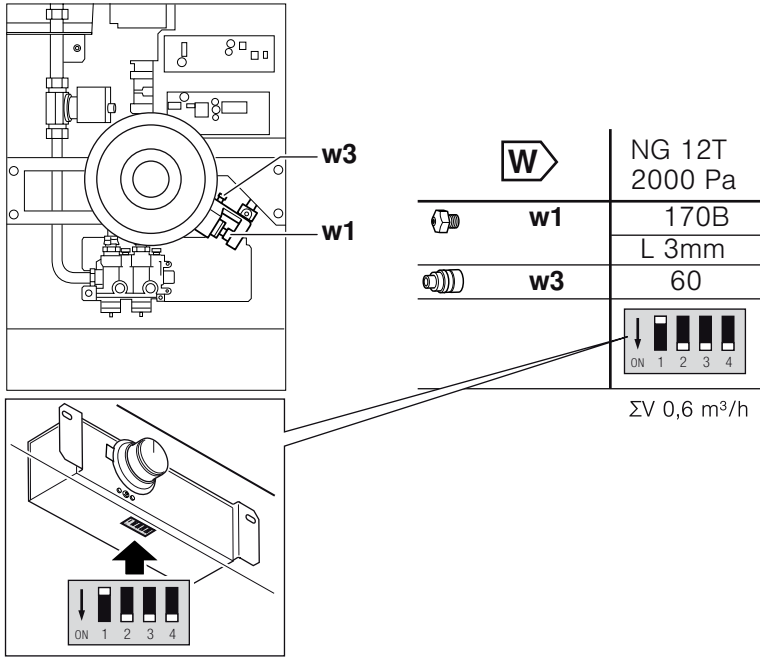
6b



6c



7



Important notes

Read these instructions carefully and keep them in a safe place. Safety during use can only be ensured if the appliance is fitted correctly according to these installation instructions. The installer is responsible for ensuring that the appliance operates perfectly at the point of installation.

⚠ Risk of injury!

Parts that are accessible during installation may have sharp edges. Wear protective gloves.

The appliance must be connected to the mains only by a licensed and trained technician.

Before carrying out any type of work, turn off the electricity and gas supply.

For installation, currently applicable building regulations and the regulations of local electricity and gas suppliers must be observed (e.g. Germany: DVGW-TRGI/TRGF; Switzerland: SVGW; Austria: ÖVGW-TR).

For conversion to another type of gas, please call the after-sales service.

⚠ Risk of gas escape!

After connecting the appliance to the gas supply, always check the connection for leak tightness. The manufacturer accepts no responsibility for the escape of gas from a gas connection which has been previously tampered with.

Ensure sufficient air exchange in the room where the appliance is installed. Up to 11 kW total output:

- Minimum volume of the room where appliance is installed: 20 m³
- A door leading to the open air or a window which can be opened.

Up to 18 kW total output:

- Minimum volume of the room where appliance is installed: 2 m³ per kW total output.
- A door leading to the open air or a window which can be opened.
- An extraction hood into the open air. Minimum displacement volume of extraction hood: 15 m³/h per kW total output.

The installation system must incorporate an all-pin isolating switch with a contact opening of at least 3 mm, or the appliance should be connected to the mains via a safety plug. The plug must remain accessible after installation is complete.

Specifications on the rating plate showing voltage, type of gas and gas pressure must agree with the local mains connection conditions.

Do not kink or trap the mains connection cable.

This appliance corresponds to appliance class 3 (for installation in a kitchen unit). It must be fitted according to the installation drawing. The wall behind the appliance must be made of non-flammable material.

This appliance is not intended for operation with an external timer or an external remote control.

Do not install this appliance on boats or in vehicles.

Special accessories

You can order the following special accessories from your specialist dealer:

AA 414 010	Ventilation molding for operation next to downdraft ventilation VL 414
WP 400 001	Multi-layer material wok pan, with curved base and handle, Ø 36 cm, 6 litres volume, 10 cm high.
VA 420 000	Connection strip for combination with other Vario 400 appliances for flush installation
VA 420 001	Connection strip for combination with other Vario 400 appliances for flush installation with appliance cover/extension
VA 420 010	Connection strip for combination with other Vario 400 appliances for surface installation
VA 420 011	Connection strip for combination with other Vario 400 appliances for surface installation with appliance cover/extension
VA 440 010	Stainless steel appliance cover
VA 450 400	Appliance extension, 38 cm

Only use the accessories as specified. The manufacturer accepts no liability if these accessories are used incorrectly.

Preparing the units (Fig.1a)

The kitchen unit must be heat-resistant to at least 90 °C (about 190 °F). The stability of the unit must be maintained after producing the cut-out.

Produce the cut-out in the worktop for one or more Vario appliances as shown in the installation sketch. The angle between the cut surface and the worktop must be 90 °.

The cut edges at the sides must be flat to ensure a good fit of the retaining springs on the appliance. In laminated worktops, it may be necessary to fit strips at the sides of the cut-out.

Remove shavings after cutting. Seal cut surfaces for resistance to heat and so they are watertight.

Pay attention to a minimum gap of 10 mm from the underside of the appliance to kitchen units.

Use suitable base constructions to ensure load-carrying capacity and stability, especially in the case of thin worktops. Pay attention to the weight of the appliance, including any payload.

Reinforcement material used must be resistant to heat and moisture.

Note: Wait until the appliance has been installed in the installation opening before checking that it is level.

Flush installation (Figure 1b)

Flush installation in a worktop is possible.

The appliance can be installed in the following temperature-resistant and waterproof worktops:

- Stone worktops
- Worktops made of plastics (e.g. Corian®)
- Solid wood worktops: Only by arrangement with worktop manufacturer (seal recess edges)
- For other materials, coordinate with the worktop manufacturer with regard to use.

Installation in laminated wood worktops is not possible.

Note: All recessing work on the worktop must be performed in a specialist workshop on the basis of the installation sketch. The recess must be produced neatly and precisely because the cut edge is visible on the surface. Clean and degrease the recess edges with a suitable cleaning agent (observe the silicone manufacturer's processing notes).

Combination of several Vario appliances (fig. 1c)

The connecting strip VA 420 000/001/010/011 is required to combine several Vario appliances. This is available separately as an optional accessory. When creating the cut-out, allow sufficient space for the connecting strip between the appliances (see installation instructions VA 420 000/001/010/011).

Appliances can be also be installed in individual cut-outs by leaving a space between the cut-outs with a minimum width of 50 mm.

To enable combination of appliances with and without an appliance cover, dimension differences can be balanced out by the extension VA 450 110/-400/-600/-800/-900 (depending on appliance width).

Combination with the appliance cover (Fig. 1d)

You can order the appliance cover VA 440 010 as a special accessory. Allow for the additional space required for the appliance cover when producing the cut-out.

Boring to fit the control knob (Fig. 2a + 2b)

The control console can be integrated in the base cupboard at the drawer level. Thickness of cabinet front: 16 - 26 mm

1. As shown in the installation sketch, drill the Ø 35 mm hole to secure the control knob in the cabinet front. Attach the enclosed stencil to the cabinet front for correct positioning of the bore.
2. If the cabinet front is thicker than 26 mm, the front must be routed from the back to max. 26 mm on an area of 80 x 310 mm.

Fitting the appliance

1. Plug the control cable into the socket on the appliance. The plug must lock into place.
2. Lower the appliance evenly into the cut-out and press down firmly (Fig. 6a).

Note: The appliance should fit tightly in the cut-out without moving around (e.g. during cleaning). If the cut-out width is on or above tolerance limit it may be necessary to fit filler strips to the sides of the cut-out.

3. Connect the appliance to the power and gas supply and test for correct functioning. There might be an air pocket in the gas supply line if the appliance switches off. Turn control knobs off and switch on again. Repeat until burner ignites.

4. **Only for flush fitting (Fig. 6b): Check appliance for correct functioning before applying sealant!** Fill the surrounding gap between the work surface and the frame with a suitable, heat-resistant silicone adhesive (e.g. OTTOSEAL® S 70). Smooth the sealing joint using the smoothing agent recommended by the silicone manufacturer. Check the usage information for the silicone adhesive. Do not use the appliance until the silicone adhesive has completely dried (at least 24 hours depending on room temperature).

Caution!

Unsuitable silicone adhesives can cause permanent discolouration on work surfaces made from natural stone.

Removing the appliance

Disconnect the appliance from the power and the gas supply. For flush-mounted appliances, remove the silicone joint. Push out the appliance from below.

Caution!

Damage to appliance! Do not lever out the appliance from above.

Gas connection

The gas connection must be arranged in such a way that the shut-off valve is accessible.

The appliance comes with two connection elbows (appliance-side G $\frac{1}{2}$ "). Select the suitable version depending on the country:

- ISO 228 G 1/2 cylindrical
- EN 10226 R 1/2 conical

Use one of the supplied connection elbows and the corresponding seal to connect the appliance to a fixed connecting cable or a gas safety hose.

If the gas safety hose is not made of metal or is only partially made of metal, the ambient temperature must not exceed 90 °C. If the gas safety hose is made of metal, the permissible ambient temperature is 115 °C.

Route the gas safety hose in such a way that it does not come into contact with the moving parts of the fitted units (e.g. drawer).

Electrical connection

Check that the appliance has the same voltage and frequency as the electrical installation system.

The hob is delivered with a mains cable, with or without plug, depending on model.

Only connect the appliance to sockets which have been fitted and earthed according to regulations.

The appliance corresponds to type Y: the mains connection cable must only be replaced by the after-sales service. Check the cable type and minimum cross section.

Technical data

Total connected load VG 415 210 CN (natural gas): 5.2 kW

Total connected load electric 17.0 W

重要说明

请认真阅读本安装说明并保存在安全的地方。只有按照安装说明正确安装电器，才能保证使用安全。安装工负责确保电器在安装位置上正常工作。

△ 有受伤危险！

在安装过程中碰得到的部件可能具有锋利的边缘。请戴上防护手套。

只有经过培训并持有上岗证书的专业人员才能将电器连接到电源。在进行任何类型的作业前，切断电源和气源。

安装时，必须遵循现行建筑条例和当地电力和燃气公司规定（如德国：DVGW-TRGI/TRGF；瑞士：SVGW；奥地利：ÖVGW-TR）。

如要改接其他燃气类型，请致电售后服务部门。

△ 有燃气泄漏危险！

在将电器连接至气源之后，一定要检查接头是否拧紧无泄漏。制造商对于因擅自改动接头而导致的燃气泄漏不承担责任。

确保安装电器的房间内有充足的换气。总功率最高达 11 kW:

- 安装电器房间的最小容积：20 m³
- 有通向室外的门或可以打开的窗户。

总功率最高达 18 kW:

- 安装电器房间的最小容积：总输出功率每千瓦 2 m³。
- 有通向室外的门或可以打开的窗户。
- 有通向室外的抽油烟机。抽油烟机的最小排风量：总输出功率每千瓦 15 m³/h。

安装系统必须采用触点间隙最小为 3 mm 的全针隔离开关，或者将电器通过安全插头连接至电源。安装完成之后，插座必须仍然便于使用。

铭牌上的电压、燃气类型和燃气压力规格必须与当地电源、气源连接条件相符。

请勿缠绕或扭结电源线。

本电器属于三类电器（适合安装在橱柜中）。必须按照安装图纸进行安装。电器后面的壁面必须由非易燃材料制成。

本电器不适合用外部定时器或外部遥控器操作。

不要将本电器安装在船上或车辆中。

专用附件

可以从专业经销商处订购以下专用附件：

AA 414 010	适用于在下排式吸油烟机 VL 414 旁边使用的通风嵌条
WP 400 001	多层材质炒锅，弧形锅底，带手柄，直径：36 cm，容量：6 升，高：10 cm。
VA 420 000	连接条，用于与其他 Vario 400 电器组合进行齐平安装
VA 420 001	连接条，用于与其他 Vario 400 电器组合，实现带电器盖或延长件的齐平安装
VA 420 010	连接条，用于与其他 Vario 400 电器组合，实现表面安装
VA 420 011	连接条，用于与其他 Vario 400 电器组合，实现带电器盖或延长件的表面安装
VA 440 010	不锈钢电器盖
VA 450 400	电器延长线，38 cm

仅可使用专用附件。因错误使用附件造成的问题，生产厂商概不负责。

准备橱柜 (图 1a)

橱柜的耐热能力必须至少达 90 °C (大约 190 °F)。在开孔切割完毕后，橱柜必须依然保持稳定。

如安装示意图所示，在台面上切割出一个或多个 Vario 电器的安装孔。切割表面和台面之间的角度必须等于 90°。

各开孔边缘必须切割整齐，确保电器上的止动弹簧妥当固定。在层压板台面中，有必要在开孔侧面安装填充条。

切割完成后，清除切屑。密封切割表面，做到耐热、防水。

注意电器的下侧与橱柜间距最小为 10 mm。

使用适当的支承面结构，确保承载力和稳定性，在台面较薄的情况下尤其如此。注意电器及负载的重量。所用的加固材料必须耐热、耐潮。

提示：将电器安装在安装孔中之后，检查电器是否水平。

齐平安装 (图 1b)

在台面上进行齐平安装是可行的。

可将电器安装在如下耐热、防水的台面内：

- 石料橱柜台面
- 塑料 (如可丽耐®) 台面
- 硬木台面：仅使用台面制造商设计 (密封开孔边缘)
- 关于其它材质的操作，请与台面制造商协商。

不可安装在层压板木质台面内。

提示：台面的所有开槽操作都必须在专门的工作间内依据安装图进行。开槽必须利索、精确，因为表面切边能够被人看到。用适当的清洁剂对开槽边缘进行清洁，去除油污 (参照硅胶制造商的处理说明)。

多个 Vario 电器组合 (图 1c)

需要使用 420 000/001/010/011 连接条来连接多个 Vario 电器。此附件作为可选附件，单独提供。开孔时，请记得留出足够空间用于安装电器之间的连接条 (参见安装说明 VA 420 000/001/010/011)。

在开孔距离最小宽度为 50 mm 时，也可在单独开孔中安装电器。

为了能够组合带和不带电器盖的电器，可以通过延长线 VA 450 110/-400/-600/-800/-900 平衡尺寸差 (根据电器宽度)。

组合电器盖 (图 1d)

可以将电器盖 VA 440 010 作为特殊附件订购。当加工开孔时要考虑到电器盖所需的额外空间。

钻孔，安装控制旋钮 (图 2a + 2b)

控制台可以集成在位于抽屉高度的低柜中。橱柜面板的厚度：16 - 26 mm

1. 如安装示意图所示，钻出 $\varnothing 35$ mm 的孔，用于将控制旋钮固定在橱柜面板中。将随设备配套提供的模板连接至橱柜面板，正确定位钻孔。
2. 如果橱柜面板厚度超过 26 mm，必须从后面在 80 x 310 mm 的面积上铣去一定厚度，使该部分达到 26 mm 的最大厚度。

安装电器

1. 将控制电缆插入电器上的插座中。插头必须锁止到位。
2. 将电器平稳地放入开孔中，用力压入 (图 6a)。

提示：电器应该牢牢固定在开孔中，不会动来动去 (例如在清洁过程中)。如果开孔宽度位于或超过公差极限，有必要在开孔侧面安装填充条。

3. 将电器接至电源和气源，检测工作是否正常。如果电器关断，那么供气管路中可能有气穴。关断控制旋钮并再次开启。重复上述操作，直至燃烧器点燃。
4. 仅适用于齐平安装 (图 6b)：在涂上密封胶之前，检查电器是否正常工作！在工作台和框架之间的周围间隙填充适当的耐热硅胶 (例如 OTTOSEAL® S 70)。使用硅树脂制造商推荐的光滑剂使密封接头光滑。参照硅胶使用说明。在硅胶完全干燥之前 (取决于室温，至少 24 小时)，不要使用电器。

注意！

不合适的硅胶可能导致天然石工作台永久褪色。

拆除电器

断开电器电源和气源。为了齐平安装电器，去除硅胶接头。从下方推出电器。

注意！

损坏电器！不要从上面用撬杆撬出电器。

燃气连接

必须以此种方式排列燃气连接才能方便地操作切断阀。

电器随附 2 个连接弯头 (电器侧方 G $\frac{1}{2}$ 处)。根据不同的国家选择合适的型号：

- ISO 228 G 1/2 圆柱螺纹
- EN 10226 R 1/2 锥管螺纹

使用其中一种提供的连接弯头和相应的密封件将电器连接到固定连接线缆或燃气安全软管。

如果燃气安全软管不是 (或仅部分) 由金属制成，则环境温度不得超过 90 °C。如果燃气安全软管完全由金属制成，则允许的环境温度为 115 °C。

以这种方式布置燃气安全软管，以便其不会与安装的橱柜的活动部件相接触 (例如抽屉)。

电气连接

检查并确认电器的电压和频率与电气安装系统一致。

根据型号，电器在交货时带有电源线，带或不带插头。

只能将电器连接至按照规定安装和接地的插座上。

本电器属于 Y 型：电源线只能由售后服务部门进行更换。请查看电源线类型和最小横截面积。

技术参数

VG 415 210 CN (天然气) 连接的总负载：5.2 kW

电连接的总负载 17.0 W