

Accessories

2023/2024



GAGGENAU

To cook a perfect dish, you need more than a good recipe

Optimized cooking routines ease preparation and allow you to focus on your creative talents. Inspired by the streamlined workflow of a professional kitchen, Gaggenau has developed accessories that enhance the appliances and, in the end, a home chef's masterpiece. Let the artistry begin.



Exclusively for our in-home chefs. With different vacuum levels and sizes of bags, you will be able to lock in flavors, preserve ingredients and marinade in a third of the time. With the ability to vacuum outside of the drawer you can also enjoy opened wine even after the following night.



From cooktop to Teppan Yaki. With this unique Gaggenau accessory, available in two different sizes, induction cooktops can easily be converted into a Teppan Yaki. Inspired by Japanese cuisine, “teppanyaki” style cooking is a healthy and exciting way to prepare a delicious meal.



Traditional baking just like in a professional brick oven. The Gaggenau baking stone fits in all Gaggenau convection ovens and can be used to perfectly prepare Tarte flambée, pizza and bread. A separate heating element heats the solid stone from underneath to temperatures up to 550°F – creating a crispy base for baked goods. Now your pastries can rival the Danish; your pizza, the Neapolitans; and your baguette, the French.



Versatile and practical. The latest combi steam ovens offer an enlarged cavity to master the culinary style. It not only steams, but braises, bakes, browns, grills, gratinates, regenerates, sous-vides and even extracts juice. After which, it cleans itself using its sophisticated automatic cleaning system and its own water supply.

Optional accessories for **single ovens**

For use with 24" BOP 250/251 and
BO 450/451 ovens

BA 016 165

Pull-out system
Enameled cast-iron frame and fully
extendable telescopic rails,
pyrolytic-safe.



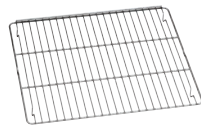
BA 026 115

Baking tray
Enameled
5/16" deep.



BA 036 165

Wire rack
Chromium-plated
Offset rack, no opening, with feet.



BA 056 115

Heating element
Necessary accessory for baking
stone BA 056 133 and GN 340 230
Gastronorm roaster.



BA 056 133

Baking stone
Includes support and pizza peel.



BS 020 002

Pizza peel
Additional set of 2.



GN 340 230

Gastronorm roaster
Non-stick cast-aluminum
4" deep, with 2 1/2" lid, GN 5/8.
Order GN 010 330 adapter for use
with the combi-steam oven.



BA 226 105

Roasting pan
Enameled
1" deep.



BA 046 117

Glass tray
1" deep.
Can be used with 24"/30" BS
combi-steam ovens.



For use with 30" BO 480/481 ovens and
BX 480/481 double ovens and 36" EB 333 oven

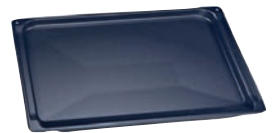
BA 018 165

Pull-out system
Enameled cast-iron frame and
fully extendable telescopic rails,
pyrolytic-safe.



BA 028 115

Baking tray
Enameled
1" deep.



BA 038 165

Wire rack
Chromium-plated
Offset rack, no opening, with feet.



BA 058 115

Heating element
Necessary accessory for baking
stone BA 058 133 and GN 340 230
Gastronorm roaster.



BA 058 133

Baking stone
Includes support and pizza peel.



BS 020 002

Pizza peel
Additional set of 2.



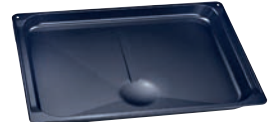
GN 340 230

Gastronorm roaster
Non-stick cast-aluminum
4" deep, with 2 1/2" lid, GN 5/8.
Order GN 010 330 adapter for use
with the combi-steam oven.



Part No. 17001373 ▼

Roasting pan
Enameled
With feet and rotisserie spit attachment,
1" deep.



BA 090 100

Stainless steel knobs
With black coating
Set of 2.
For use with the EB 333.



Optional accessories for Combi-steam ovens

For use with 24" BS 470/471 612, BS 474/475 612 and 30" BS 484/485 612 Combi-steam ovens

GN 114 230

Gastronorm pan, unperforated
Stainless steel
1 1/2" deep, GN 2/3 full tray size.
Order GN 010 330 adapter for use with the Combi-steam oven.



GN 124 230

Gastronorm pan, perforated
Stainless steel
1 1/2" deep, GN 2/3 full tray size.
Order GN 010 330 adapter for use with the Combi-steam oven.



BA 010 301

Triple telescopic pull-out rack



BA 020 361

Cooking container, stainless steel, unperforated, 1 9/16" (46 mm) deep, 5 qt. Cannot be used on lower level of appliances produced before December 2022. Order glass tray BA 046 117 instead.



BA 020 370

Cooking container, stainless steel, perforated, 1 9/16" (40 mm) deep, 5 qt.



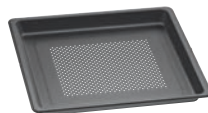
BA 020 381

Cooking container, non-stick, unperforated, 1 9/16" (46 mm) deep, 5 qt. Cannot be used on lower level of appliances produced before December 2022. Order glass tray BA 046 117 instead.



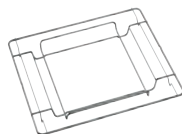
BA 020 390

Cooking container, non-stick, perforated, 1 9/16" (40 mm) deep, 5 qt.



GN 010 330

Adapter for gastronorm insert and roaster.



BA 046 117

Glass tray
1" deep.
Can also be used with 24" BO and BOP ovens.



GN 340 230

Gastronorm roaster
Non-stick cast-aluminum
4" deep, with 2 1/2" lid, GN 2/3.
Order GN 010 330 adapter for use with the combi-steam oven.



GN 114 130

Gastronorm pan, unperforated
Stainless steel
1 1/2" deep, GN 1/3 half tray size.
Order GN 010 330 adapter for use with the combi-steam oven.



GN 124 130

Gastronorm pan, perforated
Stainless steel
1 1/2" deep, GN 1/3 half tray size.
Order GN 010 330 adapter for use with the combi-steam oven.



CL S10 040

Cleaning cartridges, set of 4



Part No. 17002490

Descaling tablets, set of 4.



Part No. 00578813

Vacuuming bags, large
9 7/16" x 13 15/32", 100 pcs.
For use with the vacuuming drawers DV 461/463.



Part No. 00578814

Vacuuming bags, small
7 3/32" x 1 11/32", 100 pcs.
For use with the vacuuming drawers DV 461/463.



Optional accessories for cooktops

For use with Vario cooktops

GP 900 001

Sensor frying pan
Stainless steel, non-stick coating
For ø 6" cooking zone.
For use with VI 422, VI 492 and
CI 282/292 flex induction cooktops.



GP 900 002

Sensor frying pan
Stainless steel, non-stick coating
For ø 7" cooking zone.
For use with VI 422, VI 492 and
CI 282/292 flex induction cooktops.



GP 900 003

Sensor frying pan
Stainless steel, non-stick coating
For ø 8" cooking zone.
For use with VI 414, VI 422, VI 492 and
CI 282/292 flex induction cooktops.



GP 900 004

Sensor frying pan
Stainless steel, non-stick coating
For ø 11" cooking zone.
For use with VI 492, VI 414 and
CI 282/292 flex induction cooktops.



WP 400 001

Wok pan
Multiple-layered material
With round bottom and handle
ø 14 3/16", 5.3 quarts, height 3 15/16".
For use with 400 series VI 414 induction
wok and VI 492 cooktops.



WZ 400 000

Wok support ring for wok pan
Necessary for use with 400 series
VI 414 induction wok and VI 492 cooktop.



LV 030 000

Lava Rock
Lava stones for refilling
For use with the VR 414 and VR 230.



AA 414 010

Air Deflector
For VL 414 next to gas appliance.



For use with gas cooktops

WP 400 001

Wok pan
Multiple-layered material
With round bottom and handle
ø 14 3/16", 5.3 quarts, height 3 15/16".
For use on center wok burner of VG 295, VG 491
gas cooktops, VG 231 gas cooktop and VG 415.



For use with induction and flex induction cooktops

GP 900 001

Sensor frying pan
Stainless steel, non-stick coating
For ø 6" cooking zone.
For use with VI 422, VI 492 and
CI 282/292 flex induction cooktops.



GP 900 002

Sensor frying pan
Stainless steel, non-stick coating
For ø 7" cooking zone.
For use with VI 422 and VI 492 and
CI 282/292 flex induction cooktops.



GP 900 003

Sensor frying pan
Stainless steel, non-stick coating
For ø 8" cooking zone.
For use with VI 422 and VI 492 and
CI 282/292 flex induction cooktops.



GP 900 004

Sensor frying pan
Stainless steel, non-stick coating
For ø 11" cooking zone.
For use with VI 414 and
CI 282/292 flex induction cooktops.



CA 051 300

Teppan Yaki made of multi ply material,
16" x 10".
For use with CI 282/292 flex induction,
CX 482/492 (including Teppanyaki mode),
VI 422 and VI 492 cooktops.



GN 232 230

Teppan Yaki
Multi-ply material
13" x 14", GN 3/4.
For use with CX 482/492.



GN 232 110

Teppan Yaki
Multi-ply material
13" x 21", GN 1/1.
For use with CX 482/492
(including Teppanyaki mode).



CA 230 100

Stainless steel knob
With black coating
For CI 282/292 flex induction cooktops.



CA 060 600

Cooking sensor for temperature
regulation with pots.
For use with CX 482/492 and
CI 282/292 flex induction cooktops.

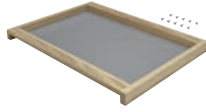


Optional accessories for refrigeration

For use with 18" wine storage unit RW 414

RA 492 160

Removable shelf with oak wood frame.
Suitable for decanters and open bottles.



RA 493 060

Presenter in oak wood and aluminum in anthracite for single bottle display.
1 piece.



RA 491 161

Fully extendable bottle trays with hidden telescopic rails in oak wood and solid aluminum in anthracite.



RA 498 140

Bottle support in oak wood for convenient storage of bottles on the division plate.



RA 430 000

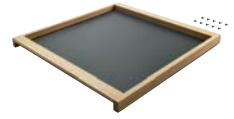
Screw hole cover set. 8 pieces.



For use with 24" wine storage unit RW 466

RA 492 660

Removable shelf with oak wood frame.
Suitable for decanters and open bottles.



RA 493 060

Presenter in oak wood and aluminum in anthracite for single bottle display.
1 piece.



RA 491 661

Fully extendable bottle trays with hidden telescopic rails in oak wood and solid aluminum in anthracite.



RA 498 640

Bottle support in oak wood for convenient storage of bottles on the division plate.



RA 430 000

Screw hole cover set. 8 pieces.



For use with refrigerators RC 462/472/492, RB 472/492 and RY 492

RA 430 100

Storage container with transparent lid, anthracite.
To add the egg insert, please order Part #11031964 in addition to the container.



RA 016 700

Ethylene absorber
For placement in a fresh cooling drawer.



RA 016 800

Ethylene absorber refill kit
For placement in a fresh cooling drawer.



Optional accessories for dishwashers

DA 042 030

Sterling silver cutlery cassette.
Aluminum silver care cassette to protect corrosion of silver cutlery.
Easy placement of cartridge in the cutlery basket.
W x H x D in inches: 2 1/16" x 8 9/16" x 1 3/16".



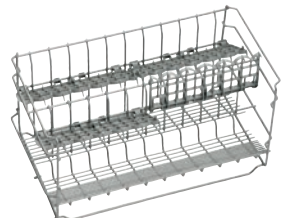
DA 043 000

Holder for long-stemmed glasses.
Offers safe positioning for up to four longstemmed glasses during the wash cycle and ensures optimal cleaning results. For positioning in the lower rack.



DA 043 060

Glassware basket.
Special glass basket to prevent tipping of cups or long-stemmed glasses in 24" deep dishwashers.
W x H x D in inches: 19 5/16" x 13 5/8" x 10 1/4".
Only for use with DF 210/211 dishwasher.



DA 045 060

3rd basket.
3rd loading level above the upper basket.
For small bowls, cups and cooking utensils.
Movable knife shelf.
Only for use with DF 211 dishwasher.



DA 045 061

3rd basket.
With smooth running rails.
3rd loading level above the upper basket.
For small bowls, cups and cooking utensils.
Movable knife shelf.
Only for use with DF 481/DF 481F dishwasher.



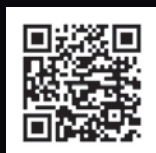
The difference is Gaggenau.



Gaggenauofficial



gaggenau_



showcase/gaggenau./



gaggenauofficial