

## 5.600.010.479 (7712)

**Notes:**

- A.** This instruction template provides instructions for two possible panel configurations:
  - 1. One piece panel installation, covering the complete front surface.
  - 2. Two piece panel installation, one upper piece to simulate a drawer and a lower piece to simulate a cabinet door.
- B.** One side of this instruction template covers the one piece panel installation and the other side covers the two piece installation.

Once you have selected the type of installation desired refer to the numbered drawings, being sure you are using the correct side of this template. Follow the numbered drawings in the order called out by the numbers. The numbered illustrations show the necessary hardware provided with the dishwasher with the hardware items numbered to match the steps used in the illustrations. The illustrations are mostly self-explanatory, but some written instructions have been provided when it was thought there might be some confusion (illustration #3, #4, #5, on single panel side and illustrations #3, #4, #5, #6, #7 on two panel side).

**Notes:** A. This instruction template provides instructions for two possible panel configurations:

1. One piece panel installation, covering the complete front surface.
2. Two piece panel installation, one upper piece to simulate a drawer and a lower piece to simulate a cabinet door.

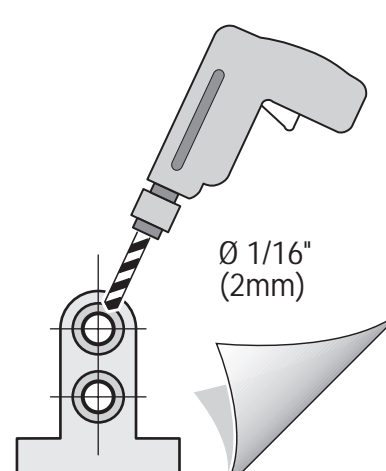
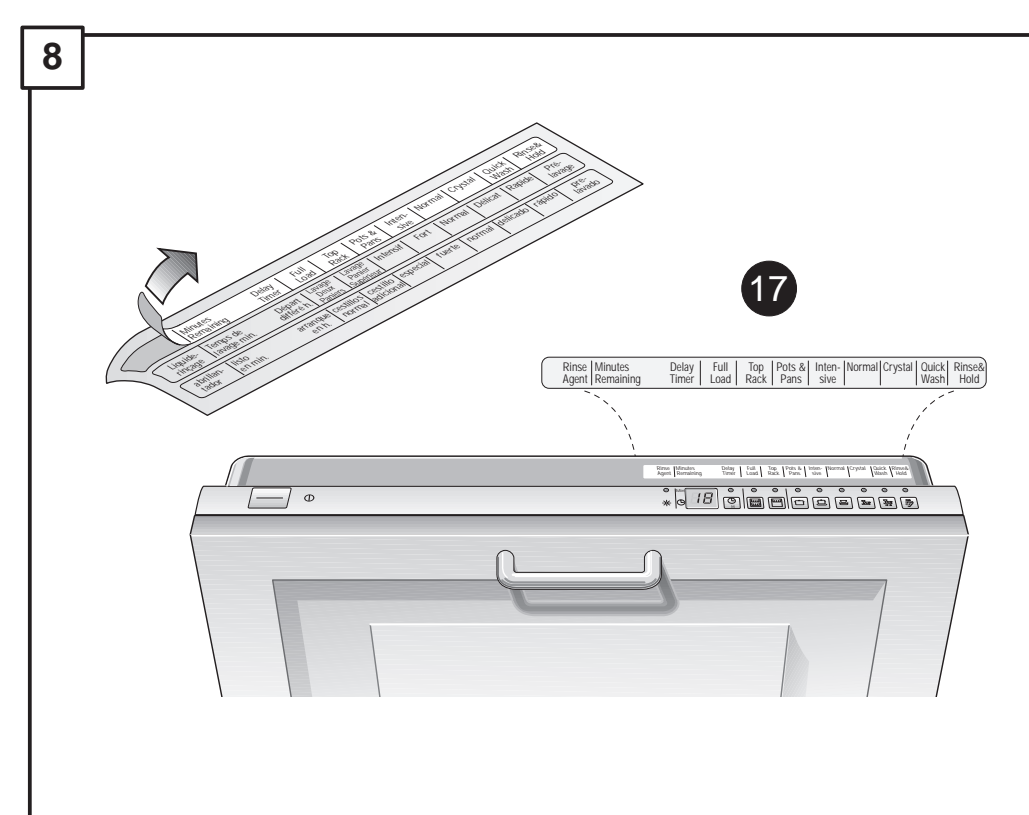
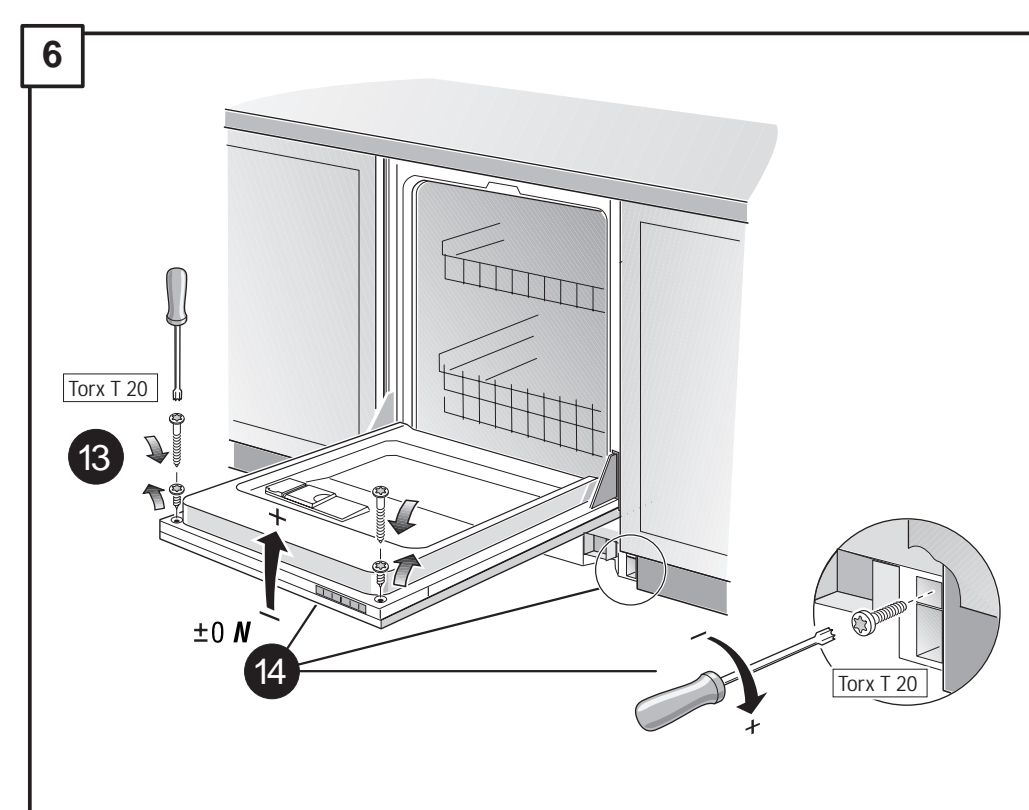
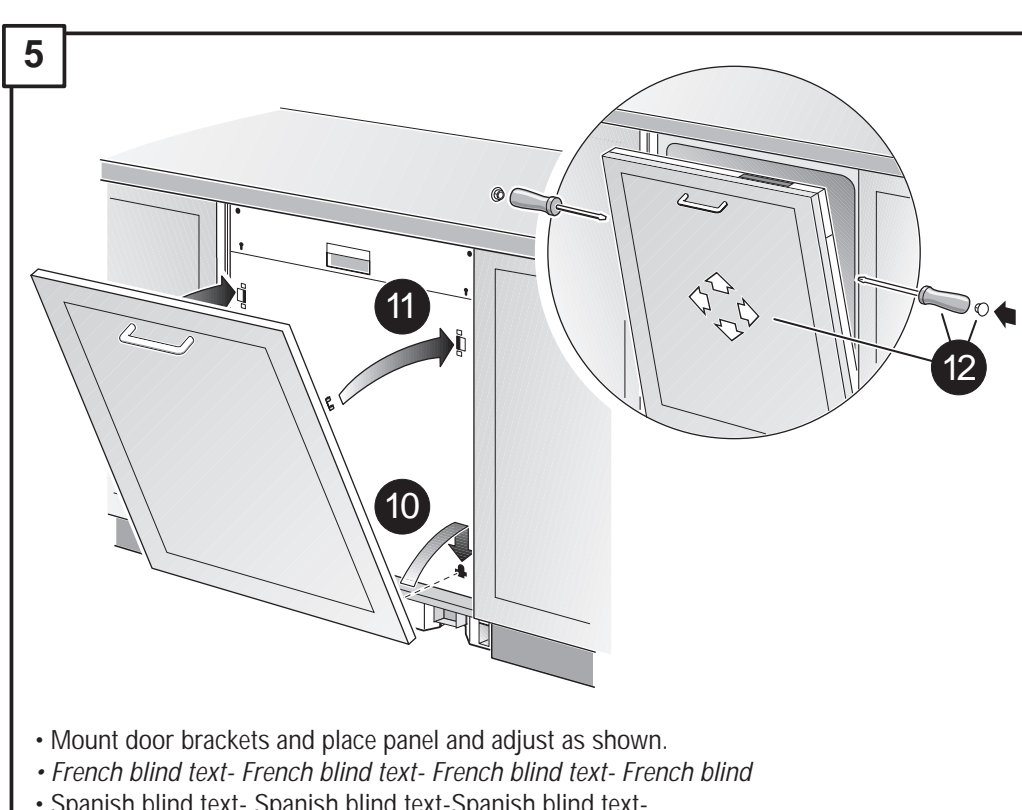
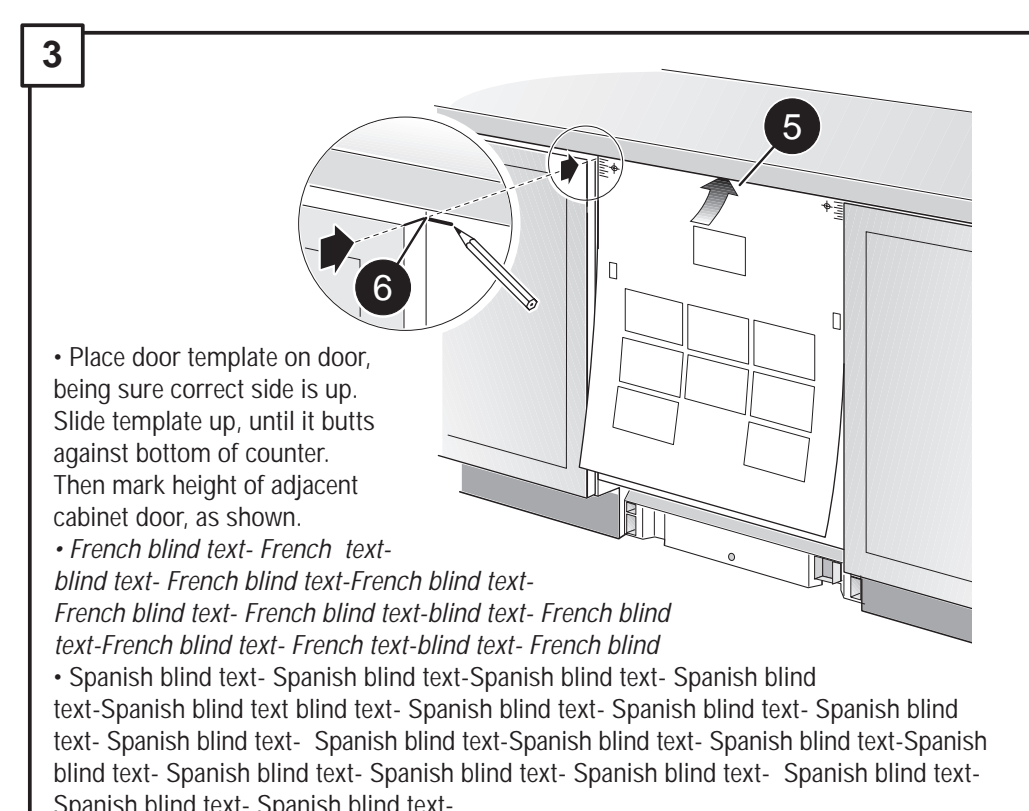
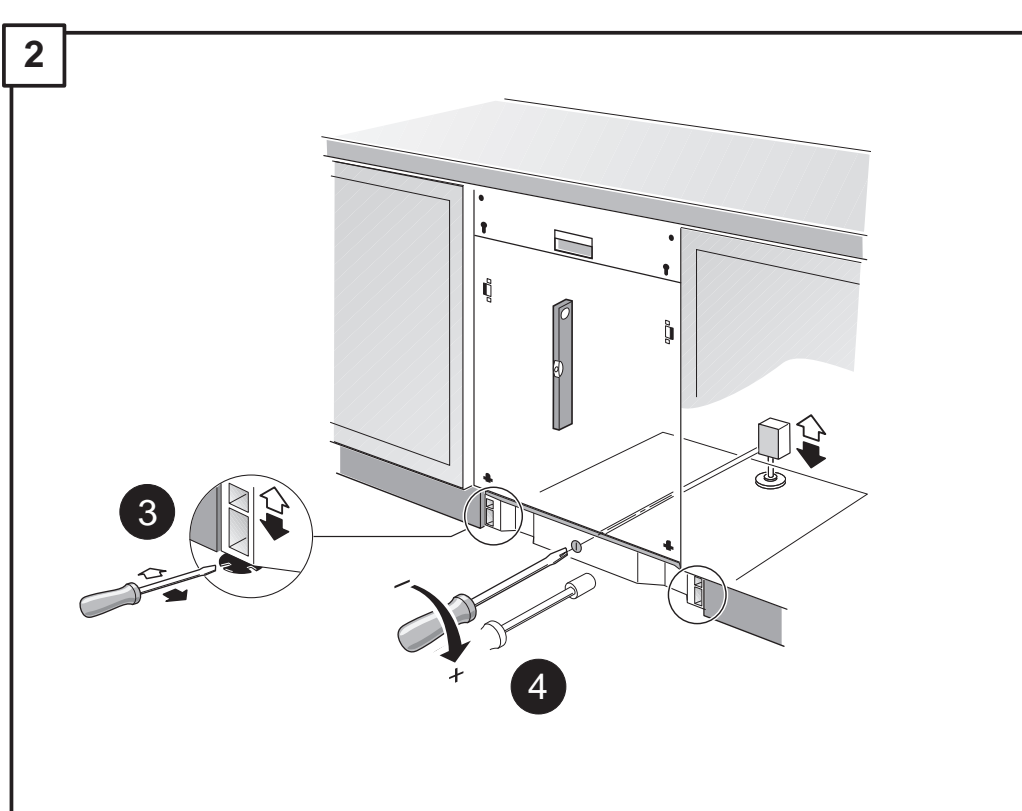
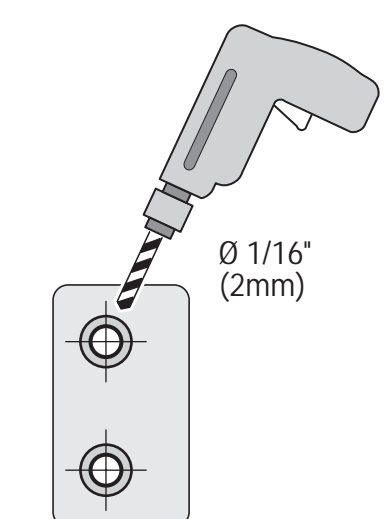
B. One side of this instruction template covers the one piece panel installation and the other side covers the two piece installation.

Once you have selected the type of installation desired refer to the numbered drawings, being sure you are using the correct side of this template. Follow the numbered drawings to the order called out by the numbers. The illustration shows the accessories, hardware provided with the dishwasher with the hardware items numbered to match the steps used in the illustrations. The illustrations are mostly self-explanatory, but some written instructions have been provided when it was thought there might be some confusion (illustration #3, #4, #5 on single panel side and illustrations #3, #4, #5, #6, #7 on two panel side).

**Notes:**

- A.** This instruction template provides instructions for two possible panel configurations:
  - 1. One piece panel installation, covering the complete front surface.
  - 2. Two piece panel installation, one upper piece to simulate a drawer and a lower piece to simulate a cabinet door.
- B.** One side of this instruction template covers the one piece panel installation and the other side covers the two piece installation.

Once you have selected the type of installation desired refer to the numbered drawings, being sure you are using the correct side of this template. Follow the numbered drawings in the order called out by the numbers. The numbered illustrations show the necessary hardware provided with the dishwasher with the hardware items numbered to match the steps used in the illustrations. The illustrations are mostly self-explanatory, but some written instructions have been provided when it was thought there might be some confusion (illustration #3, #4, #5, on single panel side and illustrations #3, #4, #5, #6, #7 on two panel side).





# Two piece panel installation

## Two piece panel installation

**IMPORTANT:** Before you begin read these instructions completely and carefully. This door mounting instruction template provides instructions on how to mount a custom door, either one piece or two piece, to the fully integrated dishwasher.

- Notes: A.** This instruction template provides instructions for two possible panel configurations:
1. One piece panel installation, covering the complete front surface.
  2. Two piece panel installation, one upper piece to simulate a drawer and a lower piece to simulate a cabinet door.
- B.** One side of this instruction template covers the one piece panel installation and the other side covers the two piece installation.

Once you have selected the type of installation desired refer to the numbered drawings, being sure you are using the correct side of this template. Follow the numbered drawings in the order called out by the numbers. Illustration 1 shows the accessory hardware provided with the dishwasher with the hardware items numbered to match the steps used in the illustrations. The illustrations are mostly self-explanatory, but some written instructions have been provided when it was though there might be some confusion (illustration #3, #4, #5 on single panel side and illustrations #3, #4, #5, #6, #7 on two panel side).

## Two piece panel installation - french text

**IMPORTANT:** Before you begin read these instructions completely and carefully. This door mounting instruction template provides instructions on how to mount a custom door, either one piece or two piece, to the fully integrated dishwasher.

- Notes: A.** This instruction template provides instructions for two possible panel configurations:
1. One piece panel installation, covering the complete front surface.
  2. Two piece panel installation, one upper piece to simulate a drawer and a lower piece to simulate a cabinet door.
- B.** One side of this instruction template covers the one piece panel installation and the other side covers the two piece installation.

Once you have selected the type of installation desired refer to the numbered drawings, being sure you are using the correct side of this template. Follow the numbered drawings in the order called out by the numbers. Illustration 1 shows the accessory hardware provided with the dishwasher with the hardware items numbered to match the steps used in the illustrations. The illustrations are mostly self-explanatory, but some written instructions have been provided when it was though there might be some confusion (illustration #3, #4, #5 on single panel side and illustrations #3, #4, #5, #6, #7 on two panel side).

## Two piece panel installation -spanish text

**IMPORTANT:** Before you begin read these instructions completely and carefully. This door mounting instruction template provides instructions on how to mount a custom door, either one piece or two piece, to the fully integrated dishwasher.

- Notes: A.** This instruction template provides instructions for two possible panel configurations:
1. One piece panel installation, covering the complete front surface.
  2. Two piece panel installation, one upper piece to simulate a drawer and a lower piece to simulate a cabinet door.
- B.** One side of this instruction template covers the one piece panel installation and the other side covers the two piece installation.

Once you have selected the type of installation desired refer to the numbered drawings, being sure you are using the correct side of this template. Follow the numbered drawings in the order called out by the numbers. Illustration 1 shows the accessory hardware provided with the dishwasher with the hardware items numbered to match the steps used in the illustrations. The illustrations are mostly self-explanatory, but some written instructions have been provided when it was though there might be some confusion (illustration #3, #4, #5 on single panel side and illustrations #3, #4, #5, #6, #7 on two panel side).

