



Connect your appliance – to the future.

Quick-start guide



# The future begins now in your home! We are pleased that you have chosen Home Connect \*

Congratulations on choosing your appliance of the future. It will simplify your everyday life and make it more enjoyable.

## More convenient.

Home Connect lets you control your domestic appliances whenever you want, wherever you want. Simply and intuitively using a smartphone or tablet. This saves you bother and waiting around, and you will have more time for the things that are truly important to you.

## More straightforward.

Using the clear touchscreen in the app, you can adjust operating settings such as audible signals or even individual programmes. It's even simpler and more precise than on the appliance itself. Plus you have direct access to all data, operating manuals and numerous instructional videos.

## More connected.

Be inspired – discover the numerous extras that have been tailor-made just for your appliances: recipe collections, tips on using your appliances and much more. Compatible accessories can be ordered at any time with just a few clicks.



\* The availability of the Home Connect function depends on the availability of Home Connect services in your country. Home Connect services are not available in every country. You can find more information here at [www.home-connect.com](http://www.home-connect.com).

# What do you need to connect your appliance to Home Connect?

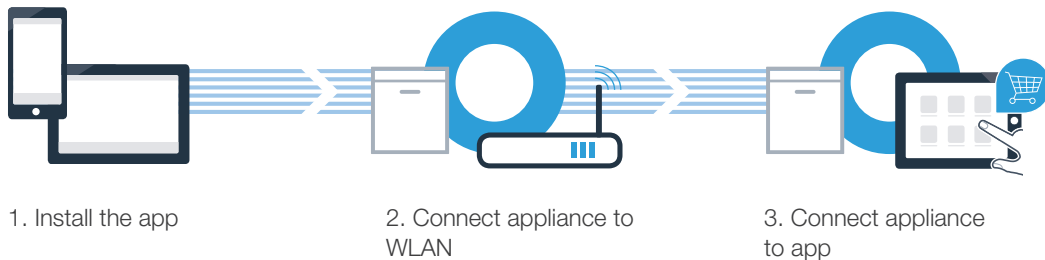
- A smartphone or tablet, equipped with the latest version of the relevant operating system.
- A home network signal (WLAN) at the location where the appliance is fitted.

## **Name and password for your home network (WLAN):**

Network name (SSID): \_\_\_\_\_

Password (key): \_\_\_\_\_

## Three steps to make your daily routine easier:



## Step 1: Installing the Home Connect app



- A** On your smartphone or tablet, go to the App Store (Apple devices) or to the Google Play Store (Android devices).



- B** Enter "**Home Connect**" in the store's search field.



- C** Select the Home Connect app and install it on your smartphone or tablet.



- D** Start the app and create your Home Connect login details. The app will guide you through the registration process. Don't forget to make a note of your e-mail address and password.



### Home Connect login details:

E-mail: \_\_\_\_\_

Password: \_\_\_\_\_



Please check availability on [www.home-connect.com](http://www.home-connect.com)

## Step 2 (initial start-up): Connecting your appliance to your home network (WLAN)

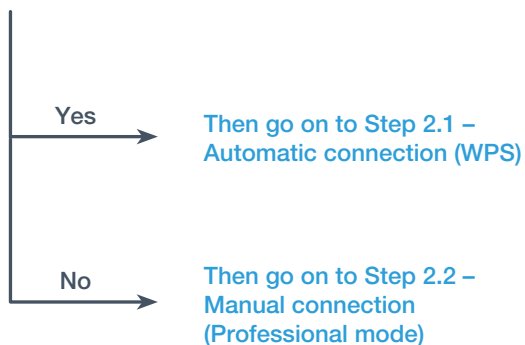


**A** Connect the appliance and switch it on.



**B** Check whether your home network router has a WPS function (automatic connection).  
Some routers have a WPS button, for example. (You will find information about this in the manual for your router.)

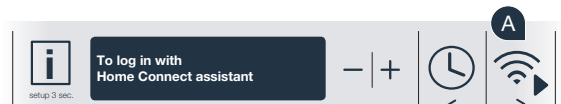
**C** Does your router have a WPS function (automatic connection)?



## Step 2.1: Automatic connection of your dishwasher to your home network (WLAN)

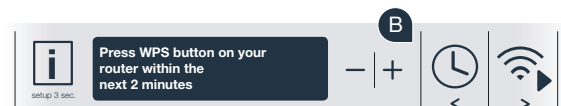


- A** To start the Home Connect assistant, press the Remote start button on your dishwasher.



Illustrations are examples.

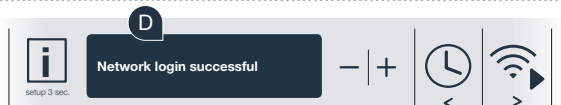
- B** Follow the instructions on the display of your dishwasher and confirm each one with the "+" button until **"Press WPS button on your router in the next 2 minutes"** appears on the display.



- C** Activate the WPS function on your home network router within the next 2 minutes. (Some routers have a WPS/WLAN button, for example. You will find information about this in the manual for your router.)



- D** Once the connection has been established, **"Network login successful"** will appear on the dishwasher's display.  
**Now go on to Step 3.**



The display shows the message **"Network connection failed"**.

The connection could not be established within 2 minutes. Check whether your dishwasher is within range of your home network (WLAN) and repeat the process if necessary, or connect manually as described in Step 2.2.



## Step 2.2: Manual connection of your dishwasher to your home network (WLAN)

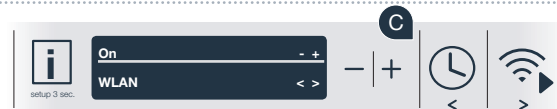


During manual connection, your dishwasher sets up its own WLAN network (access point), which you can log into using your smartphone or tablet.

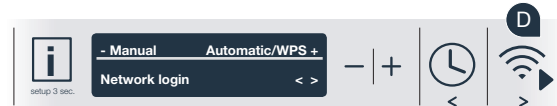
- A Press and hold the Info/Setup button on your dishwasher for 3 seconds.
- B Scroll through using the button "<" or ">" until **"WLAN off"** appears on the display.



- C Press the "+" button to switch on the WLAN function. **"WLAN on"** will now appear on the display. You will not need to repeat this process again once the WLAN function is activated.



- D Scroll in the menu using the "<" or ">" button until **"Network login"** appears on the display.

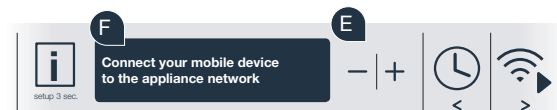


## Step 2.2: Manual connection of your dishwasher to your home network (WLAN)



**E** Press the "-" button for manual network login.

**F** **"Connect your mobile device to the appliance network"** appears on the display. Your dishwasher has now set up its own "HomeConnect" WLAN network (SSID), which you can access using your smartphone or tablet.



**G** To find this, go to the general settings menu on your smartphone or tablet (mobile device) and call up the WLAN settings.



**H** Connect your smartphone or tablet to the **"HomeConnect"** WLAN network (SSID) (WLAN password [key] is also "HomeConnect"). The connection process may take up to 60 seconds!



**I** Once successfully connected, open the Home Connect app on your smartphone or tablet.





## Step 2.2: Manual connection of your dishwasher to your home network (WLAN)



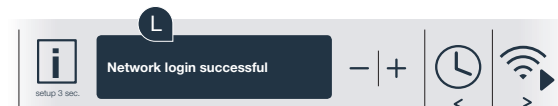
- J** The app will now take a few seconds to search for your dishwasher. Once the dishwasher (appliance) has been found, you will be prompted – if not already the case – to enter the network name (SSID) and password (key) for your home network (WLAN) in the corresponding fields.



- K** Then follow the instructions in the Home Connect app.



- L** The display of your dishwasher now shows **"Network login successful"**.  
**Now go on to Step 3.**



If it was not possible to establish a connection, press and hold the Start button on your dishwasher for 3 seconds. Then start manual network login on your dishwasher from point **E**



## Step 3: Connecting your dishwasher to the Home Connect app



- A Press the "+" button on your dishwasher.  
(This step is omitted if performing automatic network login.)
- B **"Connect to app"** now appears on the display of your dishwasher.
- C Press the "+" button on your dishwasher to start the process.



- D As soon as your dishwasher is shown in the Home Connect app, you have 2 minutes to add it to your smartphone or tablet.



- E If your dishwasher is not automatically displayed, press **"Search for domestic appliances"** in the app, and then press **"Connect domestic appliance"**.
- F Follow the final instructions in the app to confirm the connection and complete the process.



Leave the menu by pressing and holding the Info/Setup button for 3 seconds.

## Step 3: Connecting your dishwasher to the Home Connect app



Tip for use: if you would like to start the appliance using the app, press the Remote start button on your dishwasher (see image on the right). A light will now flash above the button when the function is activated.



**You have successfully connected your appliance. You can now benefit from all the advantages of the Home Connect app!**

**"Connection failed"** appears on the display panel:  
Check that your smartphone or tablet is within your home network (WLAN).  
Repeat the entire process described in Step 3.

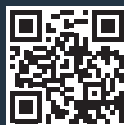


**Home Connect:** simply heading  
into a networked future with  
strong partners.



Do you have any questions or would you like to  
contact the Home Connect service hotline?  
Please visit us at

**[www.home-connect.com](http://www.home-connect.com)**



**Home Connect is a service provided by Home Connect GmbH.**

Apple App Store and iOS are trademarks of Apple Inc.  
Google Play Store and Android are trademarks of Google Inc.  
Wi-Fi is a trademark of the Wi-Fi Alliance.

9001322191 (9712) TW en