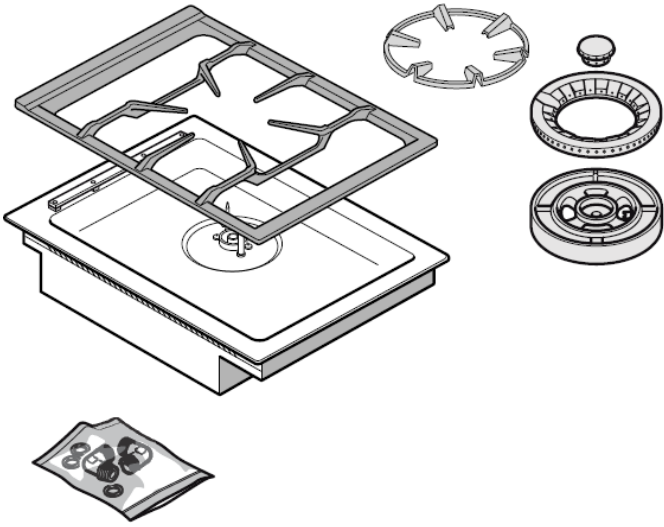




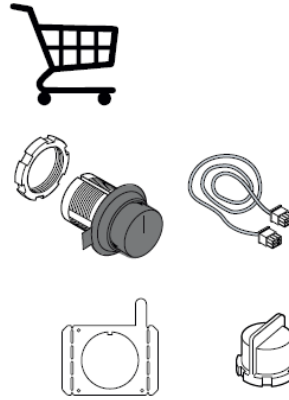
VG415315SG (Singapore Town Gas)

en  
zh-hk

Installation instructions  
安裝說明



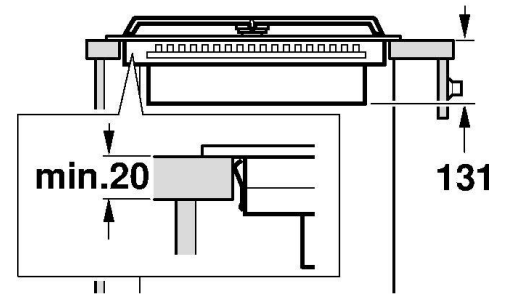
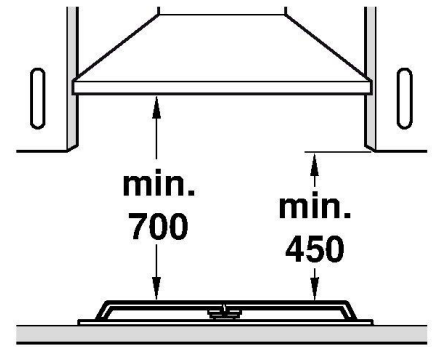
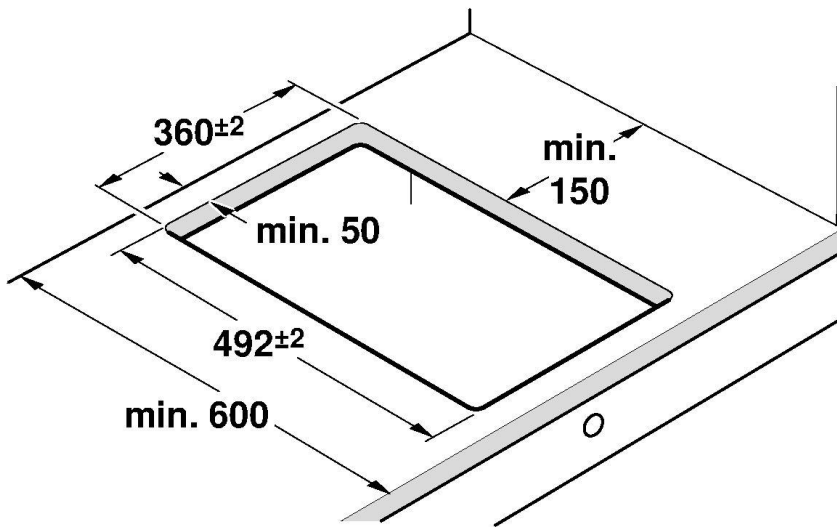
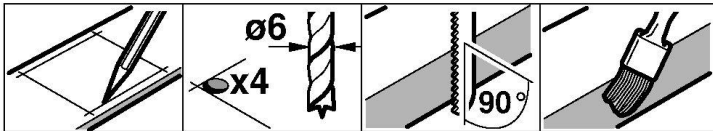
CKG410000



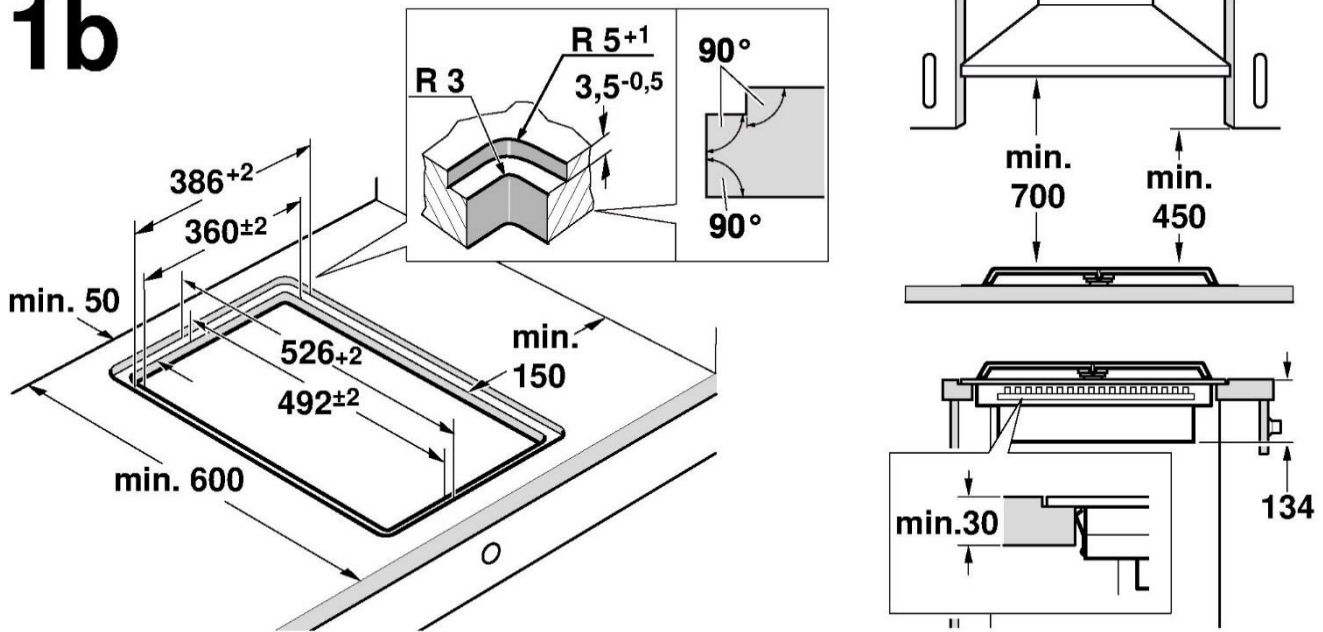
CKG410010



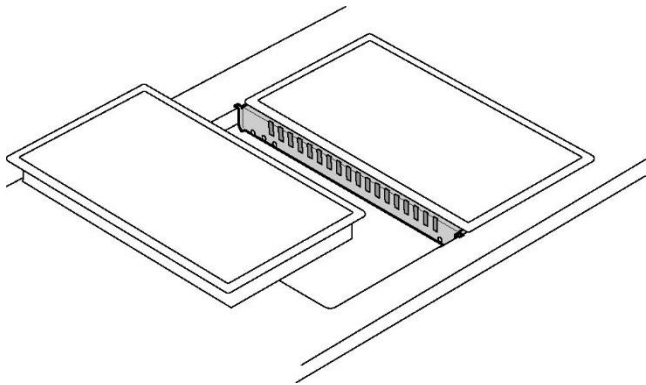
1a



# 1b

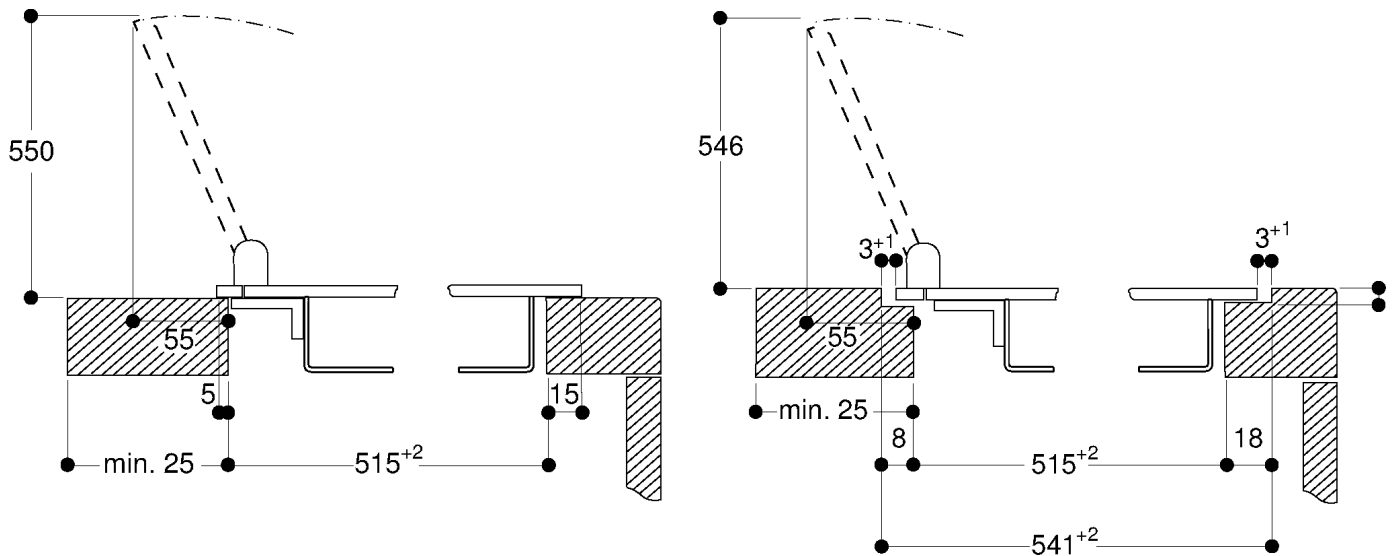


# 1c

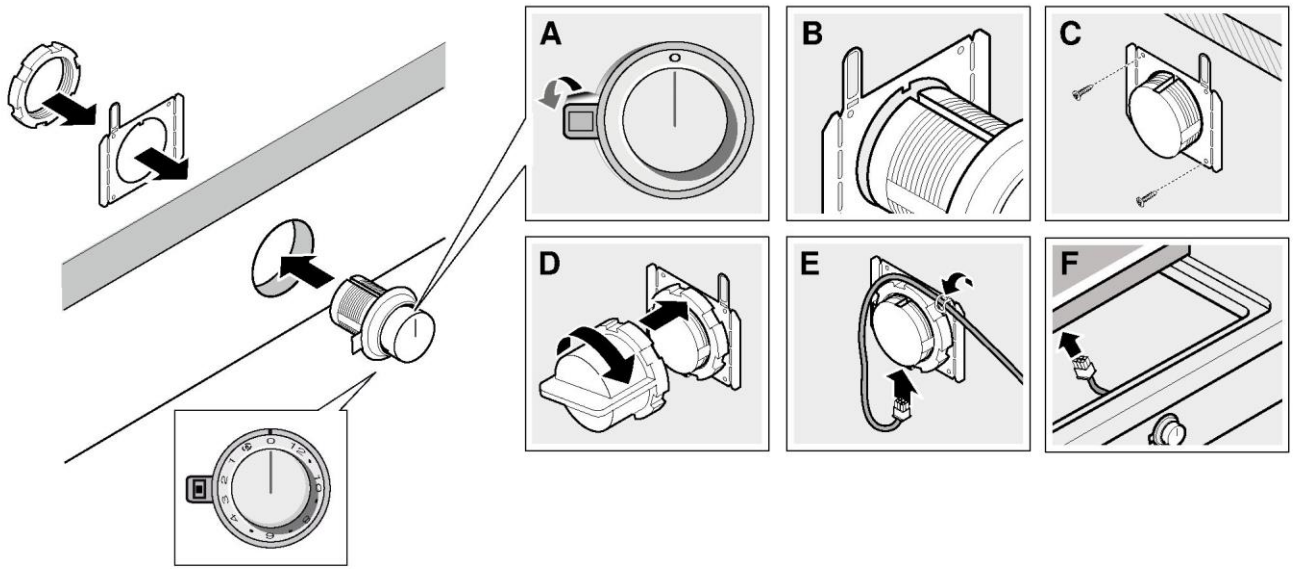


VA420004/VA420010

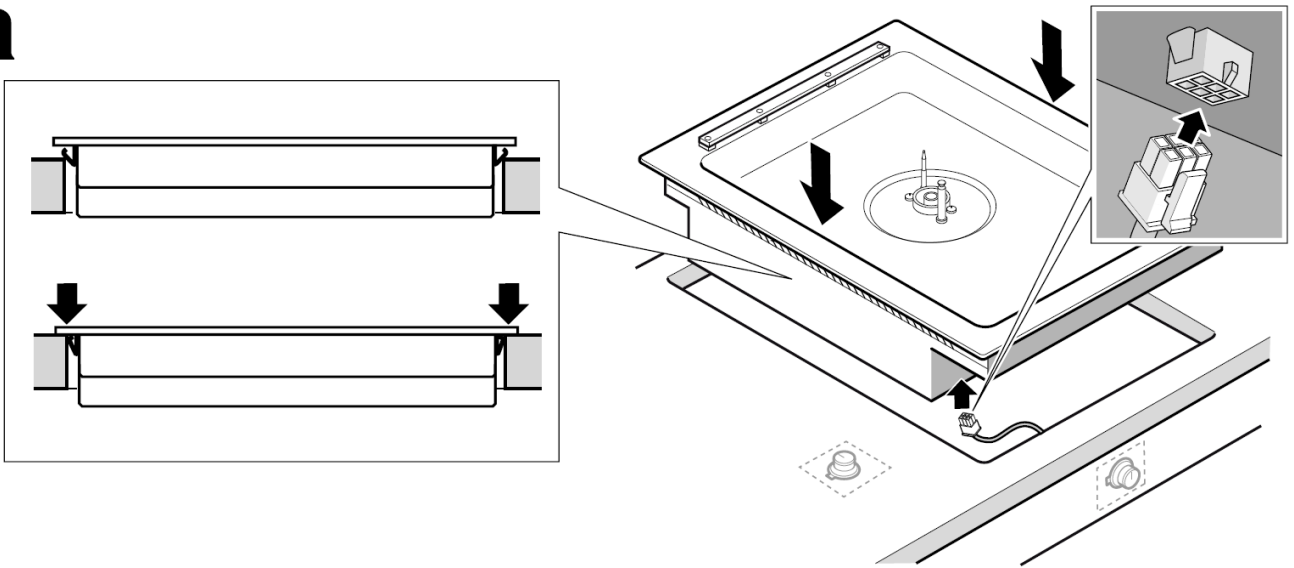
# 1d



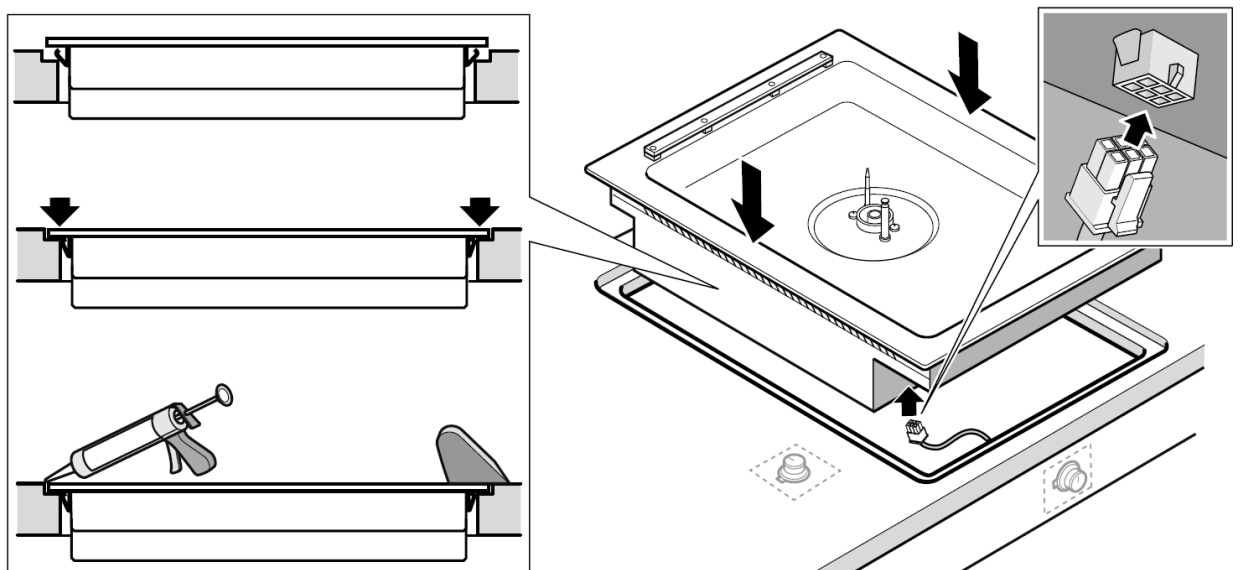
# 2



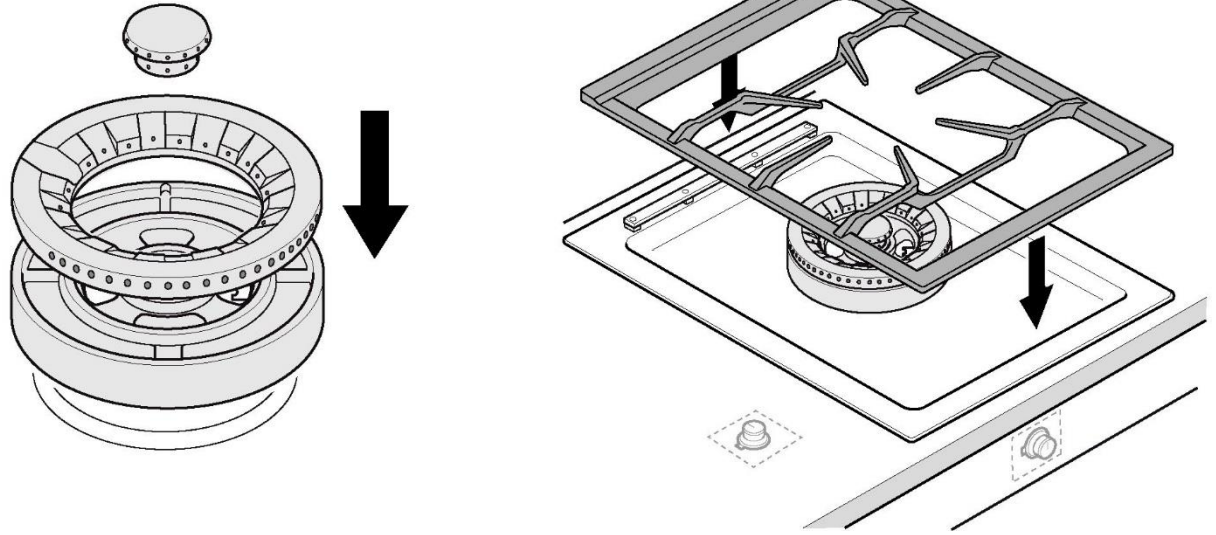
# 3a



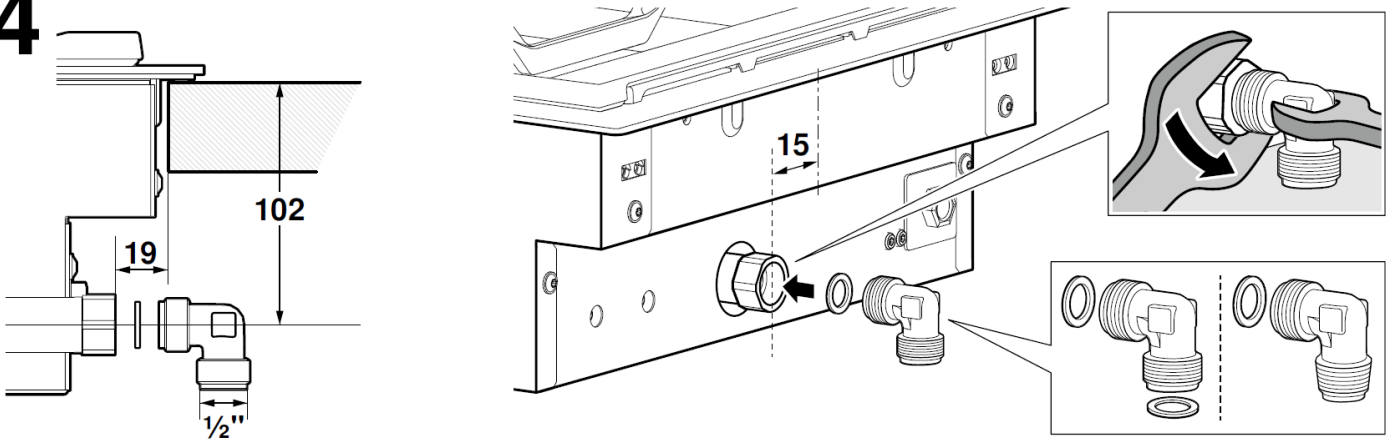
# 3b



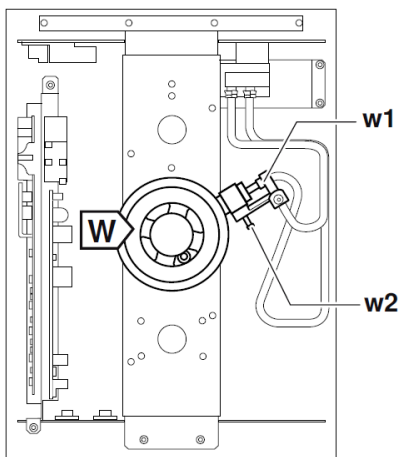
# 3c




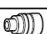
# 4



# 5



煤氣 (香港)

W		Town Gas (HK) 15 mbar
	w1	330
		L 2 mm
	w2	97
		6.5 kW

## Important notes

Read these instructions carefully and keep them in a safe place. Safety during use can only be ensured if the appliance is fitted correctly according to these installation instructions. The installer is responsible for ensuring that the appliance operates perfectly at the point of installation.

Attention!

**According to the Gas Safety Ordinance of Hong Kong, any gas installation works including the installation of appliances and connection tubing, must be undertaken by registered gas installers who are registered for that appropriate classes and be employed by registered gas contractors.**

**Use approved gas tubing bearing EMSD approval marking (example: 機電工程署批准 EMSD APPROVAL GTXXXX) for connection to appliances or other appropriate methods accepted by EMSD.**

Appliance must not be converted to another type of gas. Before carrying out any type of work, turn off the electricity and gas supply.

For installation, currently applicable building regulations and the regulations of local electricity and gas suppliers must be observed. The operating pressure of this gas hob is 15 mbar. Therefore no external gas governor is required.

### ⚠ Risk of gas escape!

After connecting the appliance to the gas supply, always check the connection for leak tightness. The manufacturer accepts no responsibility for the escape of gas from a gas connection which has been previously tampered with.

**Ensure sufficient air exchange in the room where the appliance is installed. Up to 11 kW total input:**

- Minimum volume of the room where appliance is installed: 20 m<sup>3</sup>
- A door leading to the open air or a window which can be opened.

**Up to 18 kW total input:**

- Minimum volume of the room where appliance is installed: 2 m<sup>3</sup> per kW total input.
- A door leading to the open air or a window which can be opened.
- An extraction hood into the open air. Minimum displacement volume of extraction hood: 15 m<sup>3</sup>/h per kW total input.

The installation system must incorporate an all-pin isolating switch with a contact opening of at least 3 mm, or the appliance should be connected to the mains via a safety plug. The plug must remain accessible after installation is complete.

Specifications on the rating plate showing voltage, type of gas and gas pressure must agree with the local mains connection conditions. Do not kink or trap the mains connection cable.

This appliance corresponds to appliance class 3 (for installation in a kitchen unit). It must be fitted according to the installation drawing. The wall behind the appliance must be made of nonflammable material.

This appliance is not intended for operation with an external timer or an external remote control.

Do not install this appliance on boats or in vehicles.

## Special accessories

You can order the following special accessories from your specialist dealer:

WP 400 001 Multi-layer material wok pan, with curved base and handle, Ø36 cm, 6 litres volume, 10 cm high.

Only use the accessories as specified. The manufacturer accepts no liability if these accessories are used incorrectly.

## Preparing the units (Fig.1a)

The kitchen unit must be heat-resistant to at least 90°C (about 190°F). The stability of the unit must be maintained after producing the cut-out.

Produce the cut-out in the worktop for one or more Vario appliances as shown in the installation sketch. The angle between the cut surface and the worktop must be 90°.

The cut edges at the sides must be flat to ensure a good fit of the retaining springs on the appliance. In laminated worktops, it may be necessary to fit strips at the sides of the cut-out.

Remove shavings after cutting. Seal cut surfaces for resistance to heat and so they are watertight.

Pay attention to a minimum gap of 10 mm from the underside of the appliance to kitchen units.

Use suitable base constructions to ensure load-carrying capacity

and stability, especially in the case of thin worktops. Pay attention to the weight of the appliance, including any payload. Reinforcement material used must be resistant to heat and moisture.

**Note:** Wait until the appliance has been installed in the installation opening before checking that it is level.

### Installation flush with surrounding surfaces (Fig. 1b)

It is possible to fit the appliance into a worktop such that it is flush with the worktop surface.

The appliance can be installed in the following temperature- and water-resistant worktops:

- Granite worktops
- Plastic worktops (e.g. Corian®)
- Solid wood worktops: Only on agreement with the worktop manufacturer (seal the cut-out edges)
- For other worktop materials, contact the worktop manufacturer about their use.

The appliance cannot be installed in compressed-wood worktops.

**Note:** All cut-outs in the worktop are to be carried out in a specialist workshop in accordance with the installation diagram. Each cut-out must be neat and precise as the cut edge is visible on the surface. Clean and degrease the cut-out edges with a suitable cleaning agent (follow the instructions from the silicone manufacturer).

### Combining multiple Vario appliances (Fig.1c)

The connecting strip VA 420 004/010 is required in order to combine multiple Vario appliances. This can be ordered separately as an optional accessory. When making the cut-out, allow extra space for the connecting strip between the appliances (see installation instructions VA 420 004/010).

Appliances can also be fitted in their own individual cut-outs as long as at least 50 mm of material is left between the cut-outs.

### Combination with appliance cover (Fig.1d)

The appliance cover VA 440 010 is available separately as an optional accessory. Take the additional space required by the appliance cover into consideration when making the cut-out.

### Hole for the control knob

Possible installation types:

- At the front of the floor cabinet
- In the worktop next to the appliance
- In the worktop in front of the appliance

**Note:** Follow the installation instructions provided for the control knobs.

## Fitting the control knobs (Fig.2)

**Note:** Follow the installation instructions provided for the control knobs.

1. Depending on the distance between the control knobs, it may be necessary to break off the retaining plate at the perforation. Hold the retaining plate in place against the rear of the control panel/ underside of the worktop or secure it in place with the screws provided.
2. When fitting an individual control knob or if the retaining plate has been broken off at the perforation, use two screws to hold each retaining plate in place and prevent it from rotating. For stone worktops, use temperature-resistant two-component adhesive (for metal to stone) to adhere the retaining plate.
3. Remove the protective film on the back of the illuminated ring.
4. Push the control knob into the hole, and use the installation tool provided to tighten the nut at the rear.
5. Use the short cables provided to connect all the control knobs. The male connectors must snap into place in the female connectors.
 

**Note:** The two female cable connectors on the control knob are identical.
6. Attach the long cable to one of the control knobs to connect it to the appliance. The male connector must snap into place in the female connector.
 

**Note:** The appliance can be connected to any control knob.
7. After fitting, check that all plug-in connections are seated correctly.
8. After fitting all the cables, secure them to the retaining plate by turning the tab down.

## Installing the appliance (Fig.3a)

1. Insert the end of the connection cable for the control knob into the female connector on the underside of the appliance. The male connector must snap into place.
2. Insert the appliance evenly into the cut-out. Push it down firmly into the cut-out.  
**Note:** The appliance must sit fast in the cut-out and must not be able to move around (e.g. during cleaning). If the width of the cut-out is at the upper tolerance limit, secure batten to the sides of the cut-out if necessary.
3. Connect the appliance to the power and gas supply and test for correct functioning. There might be an air pocket in the gas supply line if the appliance switches off. Turn control knobs off and switch on again. Repeat until burner ignites.

## Only for installation flush with surrounding surfaces (Fig.3b)

**Note:** Make sure that everything is working correctly before grouting. Grout the surrounding gap with a suitable temperature-resistant silicone adhesive (e.g. OTTOSEAL® S 70). Smooth the seal joint with a smoother recommended by the manufacturer. Follow the instructions for the silicone adhesive. Do not use the appliance until the silicone adhesive is completely dry (at least 24 hours, depending on the room temperature).

### Caution!

Using unsuitable silicone adhesive on natural stone work surfaces may cause permanent discolouration.

## Gas connection (Fig. 4)

The gas connection must be located in a position where the stop tap is accessible.

**According to the Gas Safety Ordinance of Hong Kong, any gas installation works including the installation of appliances and connection tubing, must be undertaken by registered gas installers who are registered for that appropriate classes and be employed by registered gas contractors.**

**Use approved gas tubing bearing EMSD approval marking (example: 機電工程署批准 EMSD APPROVAL GTXXXX) for connection to appliances or other appropriate methods accepted by EMSD.**

Using R $\frac{1}{2}$ " (for appliance side) connection elbows provided, connect the appliance to the gas tubing. The gas tubing must be routed so that it does not come into contact with moving parts of the kitchen unit (e.g. drawers).

## Electrical connection

Check that the appliance has the same voltage and frequency as the electrical installation system.

The hob is delivered with a mains cable, with or without plug, depending on model.

Only connect the appliance to sockets which have been fitted and earthed according to regulations.

The appliance corresponds to type Y: the mains connection cable must only be replaced by the after-sales service. Check the cable type and minimum cross section.

## Technical data

Gas type: Hong Kong Town Gas (15 mbar)  
Total connected load VG415315SG: 6.5 kW  
Voltage and frequency: 220-240 V, 50/60 Hz  
Electrical nominal power: 25 W

## Removing the appliance

Disconnect the appliance from the power and the gas supply. For flush-mounted appliances, remove the silicone joint. Push out the appliance from below.

### Caution!

Damage to appliance! Do not lever out the appliance from above.

## 重要注意事項

請詳讀這些指示，並保存在安全之處。只有在依照安裝指示正確安裝爐具，才能確保使用時安全無虞。安裝者須負責確保爐具在安裝位置運作正常。

### 注意！

根據香港氣體安全條例，任何氣體裝置工程，包括爐具和接駁喉管的安裝，必須由註冊氣體裝置技工執行，而該技工已於相關的氣體工程類別註冊及受聘於註冊氣體工程承辦商。

使用認可印有機電工程署批准標記（例如：機電工程署批准 EMSD APPROVAL GTXXXX）的氣體接駁喉管連接爐具，或使用機電工程署接納的其他恰當方法。

切勿轉用其他氣體。

在進行任何工作之前請先關閉電源及煤氣供給。

安裝時，請遵守適用之建築條例以及當地電力及煤氣公司的相關規定。

這個氣體爐的操作壓力為15毫巴，因此不需要安裝外置氣體穩壓器。

### ⚠ 煤氣外洩風險！

請確保爐具安裝環境的通風條件。最大總熱負荷：11kW

- 爐具安裝處室內最小空間為：20 m<sup>3</sup>
- 通向室外可以打開的門或窗戶。

最大總熱負荷：18kW

- 爐具安裝處室內最小空間為：每千瓦總熱負荷2 m<sup>3</sup>。
- 通向室外可以打開的門或窗戶。
- 通往室外的抽油煙機。抽油煙機最小排量：每千瓦總熱負荷15 m<sup>3</sup>/h

安裝系統必須備有一個全極隔離開關，且接觸距離至少間隔3 mm，或是利用安全插頭將本爐具連接到主電源。安裝完成後必須仍能使用此插頭。

額定銘牌上的電壓資料、煤氣類型與煤氣壓力必須符合當地主電源連接條件。

請勿彎曲或卡住主電源連接線。

本爐具符合爐具等級3(適合安裝在廚房櫥櫃)。務必根據安裝圖示進行安裝。在爐具後方的壁面必需為不可燃材質。

本爐具不適合與外部計時器或遙控操作搭配使用。

請不要將本爐具安裝在船隻或運輸工具上。

## 特殊配件

可向專業零售商購買以下的特殊配件。

WP 400 001 多層材質的炒鍋，附有圓弧底部與把手，Ø36公分，6公升容量，10公分高。

請勿使用指定配件以外的物品。若這些配件使用不正確，製造商將不對此負起任何責任。

## 準備安裝櫥櫃（圖1a）

廚房櫥櫃的耐熱度必須達到90 °C（約190°F）。裁切作業完成後，必須確保櫥櫃仍為安全穩固。

按照安裝圖，為一或多個Vario爐具在工作檯上進行裁切作業。切口表面與工作檯之間的角度必須為90°。

側邊必須平坦，確保能安裝至爐具的固定彈簧。如果在夾板工作檯，可能會需要在切口的側面加上邊條。

切割完成後，請清理所有碎屑。把所有切割表面密封以達成耐熱與防水效果。

請注意爐具與廚房櫥櫃內側必須要有10mm的距離。

請使用合適的基底以確保承重份量以及穩定性，尤其是安裝在薄工作檯時。請注意爐具重量包含任何淨載重量。加固所使用的材料必須有耐熱和防潮功能。

**提示：**請先將爐具安裝至開口，再檢查是否水平。

**以週圍表面齊平的方式進行安裝（圖1b）**

可以將爐具安裝至工作檯，讓爐具與工作檯表面齊平。

此爐具可以安裝於下列耐熱與防水工作檯：

- 花崗石工作檯
- 塑膠工作檯（例如：可麗耐®）
- 實心木頭工作檯：應遵循工作檯製造商的要求（密封切割邊緣）
- 關於其他工作檯材質的處理方式，請洽詢製造商。

請勿將爐具安裝至壓縮木工作檯。

**提示：**工作檯上的所有切口都必須在專業工場中進行，如安裝圖所

示。由於切邊在表面上可見，每個切口必須整齊且精確。請用適當的清潔劑來清潔切口邊緣與清除髒污（請依照矽膠製造商的說明）。

### 組合多個Vario爐具（圖1c）

組合Vario爐具需使用VA 420 004/010連接條。可另外選購此配件。進行裁切作業時，請在爐具與連接條之間保留空間（請參閱安裝說明VA 420 004/010）。

還可以將爐具分別安裝在各個裁切開口內，但各開口之間要保留至少50 mm的寬度。

### 組合爐具蓋（圖1d）

可以將爐具蓋VA 440 010作為特殊附件訂購。製作裁切開口時，請考慮爐具蓋所需的額外空間。

### 控制旋鈕的洞

可能的安裝類型：

- 落地櫃前方
- 相鄰爐具的工作檯上
- 爐具前的工作檯上

**提示：**根據安裝說明書安裝控制旋鈕。

## 安裝控制旋鈕（圖2）

**提示：**根據安裝說明書安裝控制旋鈕。

1. 視控制旋鈕之間的距離，進行切割作業時可卸下固定板。將固定板靠在控制面板的後部/工作檯的下側，或者用隨附的螺絲固定到位。
2. 當安裝單獨控制旋鈕或如果固定板在穿孔處斷裂時，請使用兩顆螺絲來保持固定板並防止其轉動。  
將爐具安裝在石面工作檯的固定板時，請使用耐高溫二液性黏劑（限金屬至石面）。
3. 撕開發光圓環後方的保護膜。
4. 將控制旋鈕推入孔中，並使用隨附的安裝輔助工具鎖緊後部的螺帽。
5. 使用隨附的短電線連接所有控制旋鈕。公接頭必須插入母接頭的正確位置。  
**提示：**控制旋鈕的兩條母電源連接線路相同。
6. 將長電線連接到其中一個控制旋鈕以將其連接到爐具。公接頭必須插入母接頭的正確位置。  
**提示：**本爐具可以連接至任何的 control 旋鈕。
7. 安裝完畢後，請確認是否正確安裝所有插座線路。
8. 安裝所有的電源線路後，轉動卡口固定其固定板。

## 安裝爐具（圖3a）

1. 將控制旋鈕連接電線的一端插入爐具底部的母接頭中。公接頭必須插入正確位置。
2. 把爐具平整地放入切割的部份中。向下推壓以穩固地推入切割的部份。  
**提示：**必須把設備穩固地放置入切割部份中，並請勿將之移動（例如在清潔時）。如果裁切部份的闊度達到了可容納範圍的上限，如有需要請在裁切部份的兩側加上邊條。
3. 將爐具連接至電源與煤氣供給，檢查是否能正常運作。如果爐具關閉，可能表示煤氣供給管路中有氣穴。轉動並關閉控制旋鈕，然後再次打開。重複動作直到爐頭火。

## 只限齊平安裝（圖3b）

**提示：**在進行填充前，請先確定所有部件都能正確運作。

在間隙的周圍填充適當的耐熱矽膠（例如 OTTOSEAL® S70）。請使用製造商建議的拋光劑使密封接頭光滑。請遵照矽膠黏著劑的使用說明操作。在矽膠黏著劑完全乾燥之前，請勿使用爐具（至少 24 小時，因室溫而異）。

### 注意！

使用不適當的矽膠黏著劑可能會導致天然大理石工作檯出現永久性變色。

## 煤氣連接（圖4）

供氣連接必須置於在關閉閥門可接近的位置。

根據香港氣體安全條例，任何氣體裝置工程，包括爐具和接駁軟喉的安裝，必須由註冊氣體裝置技工執行，而該技工已於相關的氣體工程類別註冊和受聘於註冊氣體工程承辦商。

使用認可印有機電工程署批准標記（例如：機電工程署批准 EMSD APPROVAL GTXXXX）的氣體接駁軟喉連接爐具，或使用機電工程署接納的其他恰當方法。

使用一個R $\frac{1}{2}$ "（燃氣灶側）彎接頭，使氣體爐連接至接駁軟喉。接駁軟喉鋪設必須避免與廚房設備的活動零件相接觸（例如，抽屜）。

## 電源連接

檢查爐具是否與電氣安裝系統有相同的電壓及頻率。

爐頭隨附主電源線，但是否附有插頭依型號而定。

僅能將爐具插入符合安裝與接地規定的插座。

Y型爐具：僅能透過售後服務中心更換主電源連接線。檢查電纜種類及最小橫截面

## 技術規格

氣種 香港煤氣（15毫巴）

總連接載量 VG415315SG: 6.5 kW

電壓及頻率: 220-240V, 50/60 Hz

電力額定功率: 25 W

## 拆除爐具

斷開爐具的電源與煤氣供給。若為齊平式爐具，請移除矽膠接頭。

從下面將爐具向上推。

### 注意！

爐具損壞！請勿從上方將爐具撬開。

**BSH Hausgeräte GmbH**  
Carl-Wery-Straße 34  
81739 München, GERMANY  
[www.gaggenau.com](http://www.gaggenau.com)

**GAGGENAU**



en, zh-hk (021024)