

**Gaggenau**

**en** Installation and operating instructions

# WT260101

## Tumble dryer

## Your new tumble dryer

You have opted for a tumble dryer manufactured by Gaggenau.

Please take a few minutes to read and become familiar with the advantages of your tumble dryer.

To meet the high quality demands required by Gaggenau, every tumble dryer that leaves our factory is carefully checked to ensure that it functions correctly and is in perfect condition.

For more information on our products, accessories, replacement parts and services, see our website [www.gaggenau.com](http://www.gaggenau.com) or contact our Customer Service centres.

If the operating and installation instructions describe different models, any differences will be pointed out at the relevant points in the text.



Read these operating and installation instructions before operating the tumble dryer.

## Display rules

### **⚠ Warning!**

This combination of symbol and signal word indicates a possibly dangerous situation. Not heeding the warning can cause death or injuries.

### **Caution!**

This signal word indicates a possibly dangerous situation. Not heeding the caution can cause property and/or environmental damage.

### **Note/tip**

Information about the optimum use of the appliance/any other useful information.

### **1. 2. 3. / a) b) c)**

The steps are represented by numbers or letters.

● / -

Lists are represented by a small box or a dash.

---

# Contents

---

<b>Intended use</b>	<b>5</b>
---------------------	----------

<b>Safety instructions</b>	<b>6</b>
----------------------------	----------

Children/people/pets	6
----------------------	---

Installation	8
--------------	---

Operation	11
-----------	----

Cleaning/Maintenance	15
----------------------	----

<b>Environmental protection</b>	<b>18</b>
---------------------------------	-----------

Packaging/old appliance	18
-------------------------	----

Coolant	18
---------	----

Energy-saving tips	18
--------------------	----

<b>Installation and connection</b>	<b>19</b>
------------------------------------	-----------

Scope of delivery	19
-------------------	----

Installing and connecting the dryer	19
--	----

Changing the side on which the door is hinged	21
--	----

Optional accessories	24
----------------------	----

Transport and frost protection	24
--------------------------------	----

<b>Draining the condensation water</b>	<b>25</b>
--	-----------

<b>The main points in brief</b>	<b>28</b>
---------------------------------	-----------

<b>Familiarising yourself with your appliance</b>	<b>29</b>
---	-----------

Dryer	29
-------	----

Control panel	30
---------------	----

Buttons	31
---------	----

Display panel	32
---------------	----

<b>Laundry</b>	<b>34</b>
----------------	-----------

Preparing the laundry	34
-----------------------	----

Sorting washing according to:	35
-------------------------------	----

<b>Programs and buttons</b>	<b>36</b>
-----------------------------	-----------

Programmes	36
------------	----

Buttons	38
---------	----

<b>Operating the appliance</b>	<b>41</b>
--------------------------------	-----------

Loading laundry and switching on the dryer	41
---	----

The basket for woollens	41
-------------------------	----

Drying with the basket for woollens	42
--	----

Setting a programme	43
---------------------	----

Starting the programme	44
------------------------	----

Programme sequence	44
--------------------	----

Changing the programme or adding laundry	44
---	----

Cancelling the programme	45
--------------------------	----

Programme end	45
---------------	----

Removing laundry and switching off the dryer	45
---	----

Clean the fluff filter	45
------------------------	----

Emptying the condensate container	46
--------------------------------------	----

---

**Home Connect** **47**

---

Calling up the Home Connect menu	48
Connecting to the home network and the Home Connect app	49
Activating/deactivating Wi-Fi	51
Resetting your network settings	52
Updating the software	52
Energy management	53
Information on data protection	55
Declaration of Conformity	56

---

**Noise** **57**

---

---

**Cleaning** **58**

---

Cleaning the dryer and the control panel	58
Cleaning the moisture sensor	58
Cleaning the filter in the condensate container	59

---

**Faults – what to do?** **60**

---

---

**Customer service** **63**

---

---

**Consumption values** **64**

---

Consumption values table	64
Most efficient programme for cotton fabrics	65

---

**Technical specifications** **66**

---

---

## Intended use

---

- This appliance is intended for private domestic use only.
- Do not install or operate this appliance anywhere that is liable to experience frost and/or outdoor conditions. There is a risk that the appliance will be damaged if residual water in it freezes. If hoses freeze up, they may crack/burst.
- This appliance must only be used for drying and freshening up domestic laundry, consisting of items that have been washed with water and are suitable for tumble drying (see label on item). Using the appliance for any other purpose is outside of the scope of its intended application and is forbidden.
- This appliance is intended for use up to a maximum height of 4000 metres above sea level.

### **Before you switch on the appliance:**

Check that there is no visible damage to the appliance. Do not operate the appliance if it is damaged. Should you have any problems, please contact your specialist dealer or our customer service.

Read and follow the operating and installation instructions and all other information provided with this appliance.

Retain the documents for subsequent use or for subsequent owners.

---

## **Safety instructions**

---

The following safety information and warnings are provided to protect you from injury and to prevent material damage to your surroundings.

It is nevertheless important to take the necessary precautions and to proceed with care when installing, maintaining, cleaning and operating the appliance.

### **Children/people/pets**

#### **Warning**

#### **Risk of death!**

Children and other people who are unable to assess the risks involved when using the appliance may injure themselves or may find themselves in life-threatening situations. Therefore please note:

- The appliance may be used by children over the age of 8 years and by persons with reduced physical, sensory or mental capacity or by persons with a lack of experience or knowledge as long as they are supervised or have received instruction on how to use the appliance safely and they have understood the potential risks of using the appliance.
- Children must not play with this appliance.
- Do not allow children to clean or maintain this appliance unsupervised.
- Keep children under 3 years and pets away from this appliance.
- Do not leave the appliance unattended when children or other people who are unable to assess the risks are in the vicinity.

**⚠ Warning****Risk of death!**

Children may lock themselves inside appliances and find themselves in a life-threatening situation.

- Do not position the appliance behind a door, as this may obstruct the appliance door or prevent it from opening completely.
- Once an appliance has reached the end of its life, pull the mains plug from the socket **before** severing the mains cable, and then destroy the lock on the appliance door.

**⚠ Warning****Risk of suffocation!**

If allowed to play with the packaging/plastic film or packing components, children may become caught in these or pull them over their heads and suffocate. Keep packaging, plastic film and packing components away from children.

**⚠ Warning****Risk of poisoning!**

Detergents and care products may result in poisoning if consumed. If accidentally swallowed, seek medical advice. Keep detergents and care products out of the reach of children.

## **⚠ Warning**

### **Eye/skin irritation!**

Contact with detergents or care products may cause eye/skin irritation.

Rinse eyes/skin thoroughly if they/it come(s) into contact with detergents or care products. Keep detergents and care products out of the reach of children.

## **Installation**

### **⚠ Warning**

### **Risk of electric shock/fire/material damage/damage to the appliance!**

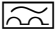
If the appliance is not installed properly, this may lead to a dangerous situation. Ensure the following:

- The mains voltage on your power socket must match the rated voltage specified on the appliance (identification plate). The connected loads and the

required fuse protection are specified on the identification plate.

- The appliance must not be supplied through an external switching device, such as a timer, or connected to a circuit that is regularly switched on and off by a utility.
- The mains plug and the protective contact socket must match and the earthing system must be correctly installed.
- The installation must have an adequate cross section.
- The mains plug must be freely accessible at all times. If this is not possible, in order to comply with the relevant safety regulations, a switch (all pole disconnection) must be built into the permanent installation in accordance with electrical installation regulations.



- If using a residual current circuit breaker, only use one that bears the following mark: . The presence of this mark is the only way to be sure that it fulfils all the applicable regulations.

### **⚠ Warning**

#### **Risk of electric shock/fire/material damage/damage to the appliance!**

If the appliance's mains cable is altered or damaged, this may result in electric shock, short circuiting or fire due to overheating.

The mains cable must not be kinked, crushed or altered, and must not come into contact with any heat sources.

### **⚠ Warning**

#### **Risk of fire/material damage/damage to the appliance!**

The use of extension cords or power strips may result in fire due to overheating or short circuiting.

Connect the appliance directly to an earthed socket that has been correctly installed. Do not use extension cords, power strips or multi-way couplers.

### **⚠ Warning**

#### **Risk of injury/material damage/damage to the appliance!**

- The appliance may vibrate or move when in operation, potentially resulting in injury or material damage.

Place the appliance on a clean, even, solid surface and, using a spirit level to guide you, level it with the screw-in feet.

- Incorrectly placing (stacking) this appliance on top of a washing machine may result in injury, material damage and/or damage to the appliance.

If this appliance is to be placed on top of a washing machine, the washing machine must be of at least the same depth and width as the appliance, and it must be secured in place with the appropriate connection set if available.

→ Page 24

The appliance **MUST** be secured with this connection set. Stacking the appliance in any other way is forbidden.

- If you take hold of any of the appliance's protruding parts (e.g. the appliance door) in order to lift or move it, these parts may break off and cause injury. Do not take hold of any of the appliance's protruding parts in order to move the appliance.

### **Warning**

#### **Risk of injury!**

- The appliance is very heavy. Lifting it may result in injury. Do not lift the appliance on your own.
- The appliance has sharp edges on which you could cut your hands. Do not take hold of the appliance by its sharp edges. Wear protective gloves to lift it.

- If the hoses and mains cables are not correctly routed, they may constitute a tripping hazard, which may result in injury.  
Route hoses and cables such that they do not constitute a tripping hazard.

## Operation

### Warning

#### **Risk of explosions/fire!**

Laundry that has come into contact with solvents, oil, wax, wax remover, paint, grease or stain remover may ignite when dried in the machine, or even cause the appliance to explode.

Therefore please note:

- Rinse the laundry thoroughly with warm water and detergent before drying it in the machine.

- Do not place laundry in this appliance to be dried if the laundry has not been washed first.
- Do not use the appliance if industrial chemicals have been used to clean the laundry.

### Warning

#### **Risk of explosions/fire!**

- If there is any residual material left in the fluff filter, this may ignite when drying is in progress, or even cause the appliance to catch fire or explode. Clean the fluff filter regularly.
- Certain objects may ignite when drying is in progress, or even cause the appliance to catch fire or explode. Remove any lighters or matches from pockets on items of clothing.

en Safety instructions

- If there is coal dust or flour in the air around the appliance, this may cause an explosion.

Make sure that the area around the appliance is kept clean when it is in operation.

**⚠ Warning**

**Risk of fire/material damage/damage to the appliance!**

The appliance contains R290, a refrigerant that is environmentally friendly but flammable.

Keep open fire and ignition sources away from the appliance.



**⚠ Warning**

**Risk of fire/material damage/damage to the appliance!**

If a program is terminated before the drying cycle has finished, this prevents the laundry from cooling down sufficiently and may cause the laundry to ignite, or may result in material damage or damage to the appliance.

- During the last part of the drying cycle, the laundry in the drum is not heated (cooling cycle). This is to ensure that it remains at a temperature at which it will not be damaged.
- Do not switch off the appliance before the drying cycle has finished unless you remove all items of laundry from the drum immediately and spread them out (to dissipate the heat).

**⚠ Warning****Risk of poisoning/material damage!**

Condensation water is not suitable for drinking and may be contaminated with lint.

Contaminated condensation water may be hazardous to health and may cause material damage.

Do not drink or reuse.

**⚠ Warning****Risk of poisoning!**

Poisonous fumes may be given off by cleaning agents that contain solvents, e.g. cleaning solvent.

Do not use cleaning agents that contain solvents.

**⚠ Warning****Risk of injury!**

- If you support your weight/sit on the appliance door when it is open, the appliance may tip over, which may result in injury.

Do not support your weight on the appliance door when it is open.

- If you climb onto the appliance, the worktop may break, which may result in injury.

Do not climb onto the appliance.

- If you reach into the drum while it is still rotating, you risk injuring your hands. Wait until the drum has stopped rotating.

**⚠ Caution!**

- Material damage/damage to the appliance:  
If the amount of laundry in the appliance exceeds its maximum load capacity, it may not be able to operate properly, or this may result in material damage or damage to the appliance.  
Do not exceed the maximum load capacity of dry laundry. Make sure you comply with the maximum load capacities specified for each of the programs.
- Material damage/damage to the appliance:  
If you operate the appliance without a fluff catcher (e.g. fluff filter, fluff depot, depending on appliance specifications), or if the fluff catcher is incomplete or defective, this may result in damage to the appliance.

Do not operate the appliance without a fluff catcher, or with a fluff catcher that is incomplete or defective.

- Material damage/damage to the appliance:  
Light objects such as hair and lint may be sucked into the air inlet when the appliance is in operation. Keep these away from the appliance.
- Material damage/damage to the appliance:  
Foam and foam rubber may deform or melt if dried in the appliance. Do not dry laundry items that contain foam or foam rubber in the appliance.

- Material damage/damage to the appliance:  
If you pour the wrong quantity of detergent or cleaning agent into the appliance, this may result in material damage or damage to the appliance. Use detergents/care products/cleaning agents and softeners in accordance with the manufacturers' instructions.
- Material damage/damage to the appliance:  
If the appliance overheats, it may not be able to operate properly, or this may result in material damage or damage to the appliance. Make sure that the appliance's air inlet is never obstructed when the appliance is in operation, and that the area around the appliance is adequately ventilated.

## Cleaning/Maintenance

### **Warning**

#### **Risk of death!**

The appliance is powered by electricity. There is a risk of electric shock if you come into contact with live components. Therefore please note:

- Switch off the appliance. Disconnect the appliance from the power supply (pull out the plug).
- Never take hold of the mains plug with wet hands.
- When removing the mains plug from the socket, always take hold of the plug itself and never the mains cable, otherwise this may damage the mains cable.
- Do not make any technical modifications to the appliance or its features.

- Repairs and any other work on the appliance must only be conducted by our customer service or by an electrician. The same applies for replacing the mains cable (when necessary).
- Spare mains cables can be ordered from our customer service.

**⚠ Warning**

**Risk of poisoning!**

Poisonous fumes may be given off by cleaning agents that contain solvents, e.g. cleaning solvent.

Do not use cleaning agents that contain solvents.

**⚠ Warning**

**Risk of electric shock/material damage/damage to the appliance!**

If moisture penetrates the appliance, this may cause it to short circuit.

Do not use a pressure washer, steam cleaner, hose or spray gun to clean your appliance.

**⚠ Warning**

**Risk of injury/material damage/damage to the appliance!**

The use of spare parts and accessories supplied by other brands is dangerous and may result in injury, material damage or damage to the appliance.

For safety reasons, use genuine spare parts and accessories only.



**⚠ Caution!**

Material damage/damage to the appliance: Cleaning agents and agents for pretreating laundry (e.g. stain removers, prewash sprays, etc.) may cause damage if they come into contact with the surfaces of the appliance. Therefore please note:

- Do not allow these agents to come into contact with the surfaces of the appliance.
- Clean the appliance with nothing but water and a soft, damp cloth.
- Remove any detergent, spray or other residues immediately.

---

## Environmental protection

---

### Packaging/old appliance



Dispose of packaging in an environmentally-responsible manner.

This appliance is labelled in accordance with European Directive 2012/19/EU concerning used electrical and electronic appliances (waste electrical and electronic equipment - WEEE). The guideline determines the framework for the return and recycling of used appliances as applicable throughout the EU.

### Coolant

#### **Caution!**

Risk of fire/risk of poisoning/risk of material damage and damage to the appliance: The appliance contains refrigerant which, although it is environmentally friendly, is flammable R290. Failure to dispose of it properly may result in a fire or poisoning.

Dispose of the appliance properly and do not damage the pipes in the refrigerant circuit.

## Energy-saving tips

- Spin the laundry before drying. The drier the laundry, the shorter the drying time will be, thus consuming less energy.
- Load the dryer with the maximum load.

**Note:** Do not exceed the maximum load for the programs, as this prolongs the drying time and increases energy consumption.

- Ventilate the room and keep the air inlet on the dryer free to ensure air exchange.
- Clean the fluff filter after each drying cycle. If the fluff filter is dirty, the drying time is prolonged and energy consumption is increased.
- **Energy saving mode:**  
If the dryer is not operated for a prolonged period, it automatically switches off before the program starts and when the program has ended to save energy. The display panel and indicator lamps go off after a few minutes and the Start button flashes. To activate the lighting, press any button, open or close the dryer door or turn the program selector.

---

## Installation and connection

---

### Scope of delivery

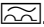
- Dryer
- Installation and operating instructions
- Basket for woollens\*
- Condensation drain\*

### Installing and connecting the dryer

#### Warning

#### Risk of death!

There is a risk of electric shock as the dryer is operated with electricity.

- Check the dryer for visible damage. You must not operate the dryer if it is damaged.
- Before connecting the dryer to the power supply, ensure that the electric voltage specified on the rating plate matches the voltage of your socket.
- Only use residual current circuit breakers with the following symbol: .

- Ensure that the mains cable is not kinked or trapped, and that it does not come into contact with heat sources or sharp edges.

#### Warning

#### Children could lock themselves in the dryer, putting their lives at risk!

Do not set up the dryer behind a door or sliding door, as this may obstruct the dryer door or prevent it from opening.

#### Warning

#### Risk of fire/risk of poisoning/risk of material damage and damage to the appliance!

The dryer contains refrigerant which, although it is environmentally friendly, is flammable R290.

- Make sure that the air inlet on the dryer is always kept clear and that the room has sufficient ventilation.
- Do not place the dryer near open fires and ignition sources.

\* Depending on the model

## en Installation and connection

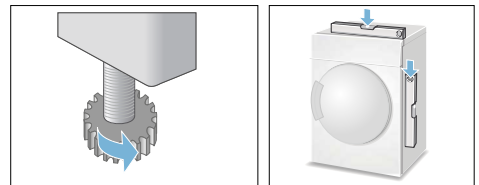
### **⚠ Caution!**

- Risk of injury:
  - As the dryer is heavy, you could injure yourself by trying to lift it. Do not lift the dryer on your own.
  - You could cut your hands on the sharp edges of the dryer. Do not hold the dryer by the sharp edges.
  - Protruding parts on the dryer may break off when it is lifted or pushed. Do not move the dryer by holding onto protruding parts.
- Risk of material damage to the dryer or fabrics:
  - Check the dryer for damage caused during transportation. Never operate a dryer if it is damaged.
  - Any residual water in the dryer may freeze and damage the dryer. Do not install the dryer in rooms that are at risk of frost.

During installation, ensure that:

- The dryer is placed on a clean, level and firm surface,
- The mains plug can be accessed at all times,
- The area around the dryer is kept clean and
- The dryer is levelled using the threaded feet.

**Note:** Check the alignment of the appliance with a spirit level and correct if necessary. Change the height by turning the appliance feet. All appliance feet must stand firmly on the ground.



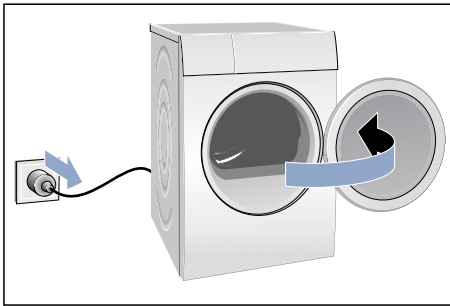
Incorrect alignment may cause high noise levels, vibrations and improper movement of the drum.

**Note:** If in doubt, have the appliance connected by a specialist.

## Changing the side on which the door is hinged

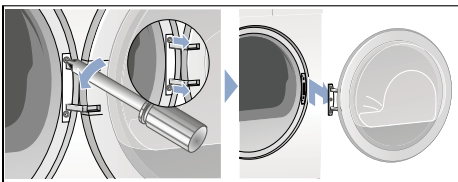
Proceed as follows to change the side on which the door is hinged:

- 1 Set the programme selector to the "Off" position, disconnect the dryer from the mains and open the door.

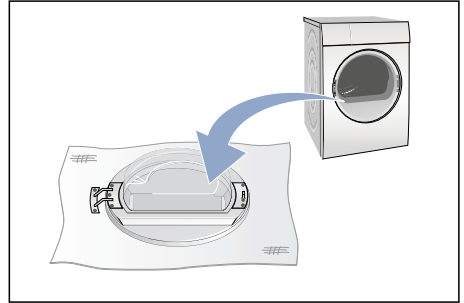


- 2 Remove the screws from the dryer and then remove the dryer door.

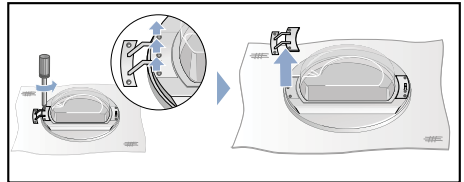
**Note:** Use a T20 (Torx) screwdriver only. Do not use any other tools to change the side on which the door is hinged.



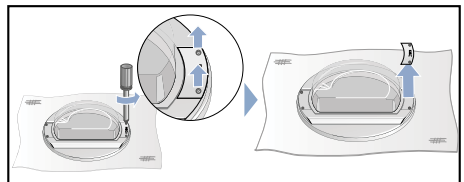
- 3 Carefully place the dryer door onto a flat surface, and place a hand towel or other such item between the door and the surface to avoid scratching or damaging the door.



- 4 Now remove the screws from the door hinge, and remove the hinge from the dryer door.

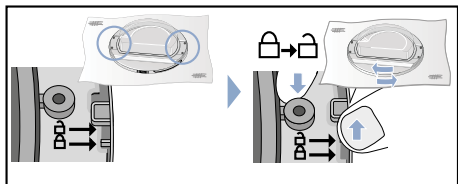


- 5 Remove the screws from the door handle on the dryer door and remove the door handle.

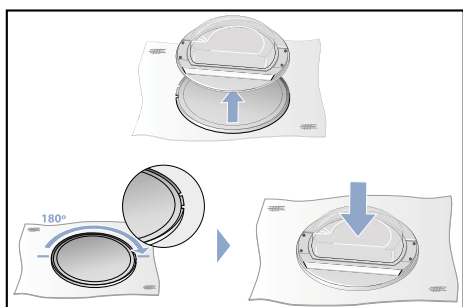


**en** Installation and connection

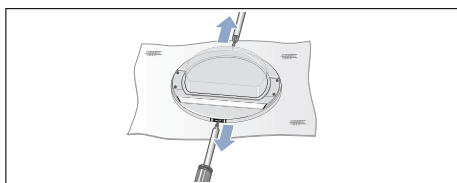
**6** Unlock the door ring.



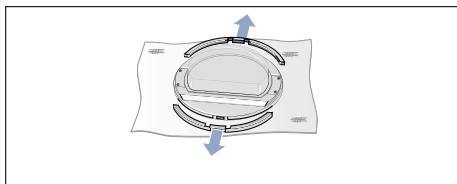
**7** Now lift the dryer door from the door ring. Rotate the dryer door and place it back onto the door ring in the corresponding place.



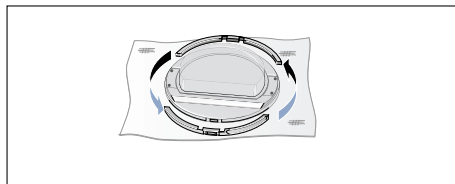
**8** Remove the screws from the top and bottom of the dryer door.



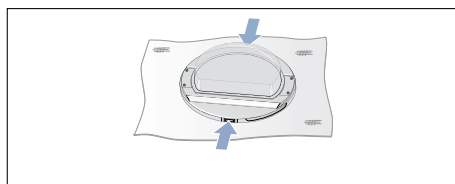
**9** Remove the rings from the dryer door.



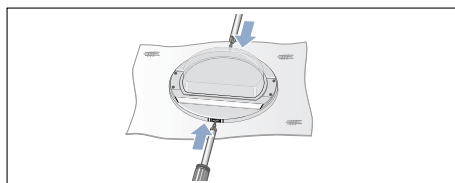
**10** Swap the rings around.



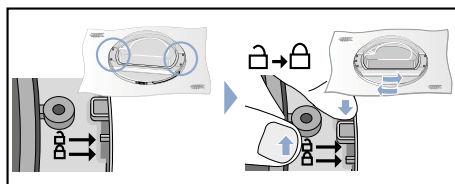
**11** Press the rings onto the dryer door.



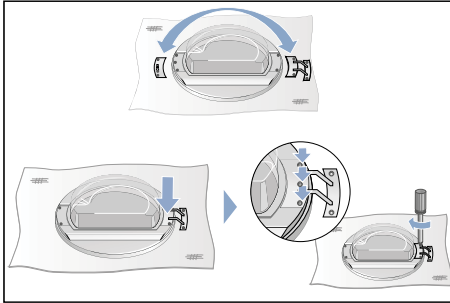
**12** Screw the rings tightly back onto the dryer door.



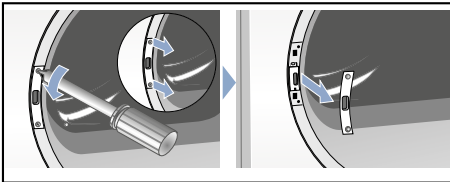
**13** Lock the door ring back in place.



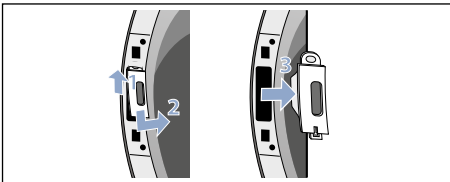
- 14** Put the door hinge and door handle in place as shown in the picture, and screw them back onto the dryer door.



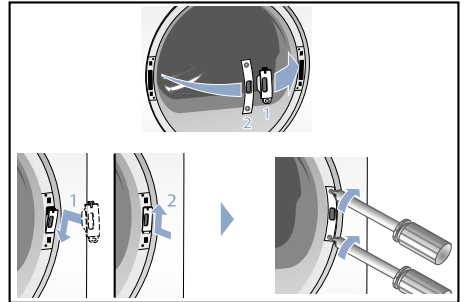
- 15** Remove the cover from the door lock on the dryer and place it to one side.



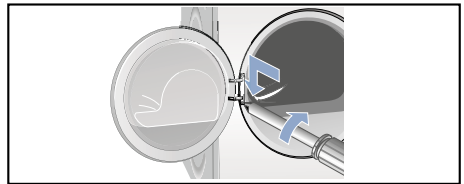
- 16** Remove the door lock.



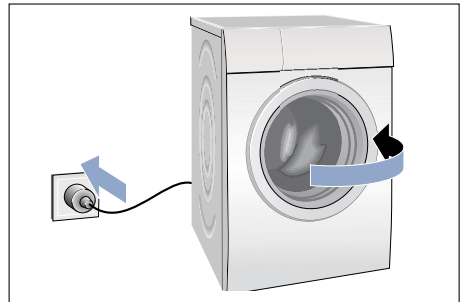
- 17** Insert the door lock (1.) on the other side of the dryer and screw the cover (2.) back on.



- 18** Now also screw the dryer door back on.



- 19** You can now reconnect the dryer, close the door and start a programme.



## Optional accessories

Order optional accessories\* from the after-sales service:

- **Washer-dryer stack**

**connection set:**

To save space, the dryer can be placed on top of a suitable washing machine of the same width and depth.

The dryer must be secured to the washing machine using this connection set.

Order number with pull-out worktop: **WA032001**.

## Transport and frost protection

- 1 Empty the condensate container.
- 2 Select any programme using the programme selector.
- 3 Press the Start button.
- 4 Wait for 5 minutes.  
**Note:** The condensation is drained.
- 5 Empty the condensate container again.
- 6 Switch off the dryer.

**Note:** Despite draining, there will always be some residual water in the dryer.

 **Caution!**

- Any residual water may leak out and cause material damage.: Transport the dryer in an upright position.
- The dryer contains coolant and may be damaged.: Allow the dryer to rest for two hours before initial use.

\* Depending on the model



## Draining the condensation water

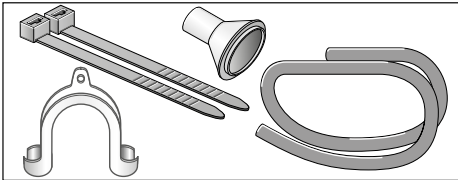
Condensation will form in the appliance as it dries the laundry.

You must ensure that the drain hose is connected when you operate the appliance.

If there is no drain hose connected to the appliance, the condensation water from the appliance will run into the condensation container. In this case, you will need to empty the condensation container each time the dryer finishes drying the laundry, and also if it becomes full before drying is complete.

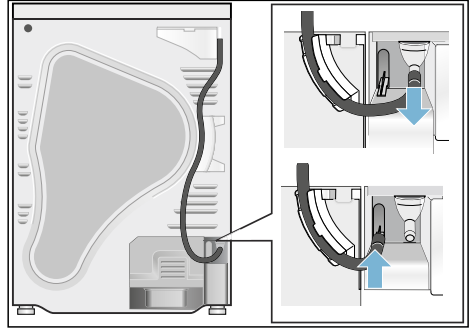
Connect the drain hose as follows:

- 1 Remove the accessories from the dryer drum.

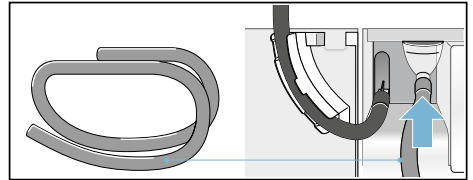


- 2 When the dryer is delivered from the factory, the hose for discharging the condensation into the condensation container is fastened to the connecting piece.

- 3 Disconnect the hose from the connecting piece and put it in the "parked" position.

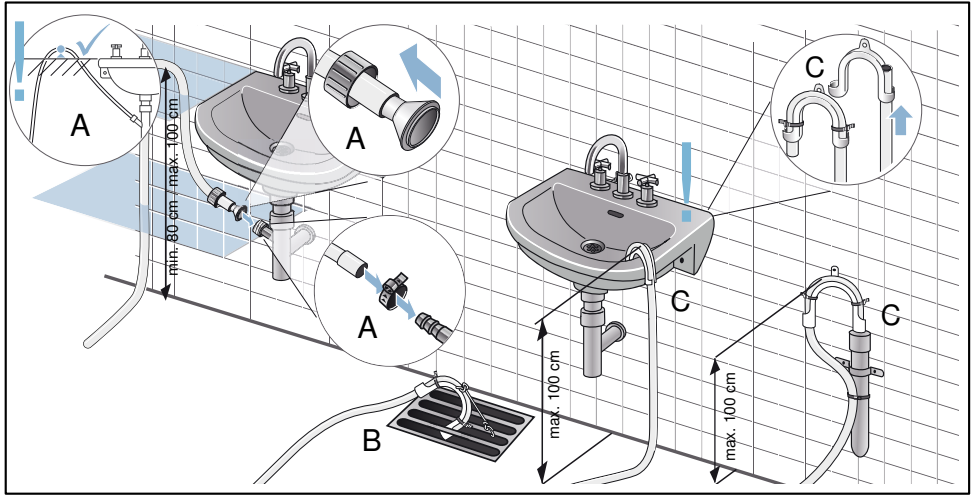


- 4 Take the drain hose from the accessories and secure it to the free connecting piece.



**en** Draining the condensation water

- 5 Fasten the other end of the drain hose with the remaining accessories, depending on the connection situation (A, B or C).



**⚠ Caution!**

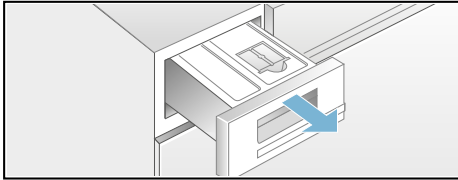
- Accumulated water can be drawn back into the dryer and may cause material damage.:

Check that the water drains away from the wash basin quickly. The drain must not be sealed or blocked.

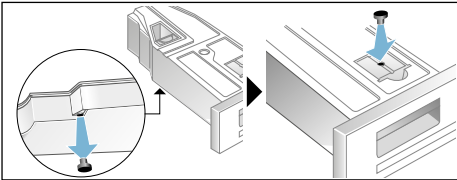
- Material damage due to leaks or draining water.:

Secure the drain hose so that it cannot slip out. Do not kink the drain hose. Ensure that a height difference of max. 100 cm and min. 80 cm between the installation surface and the drain is maintained for drainage into a siphon.

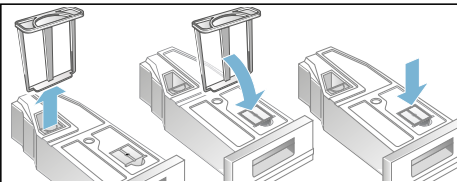
- 6 Pull out the condensation container fully.



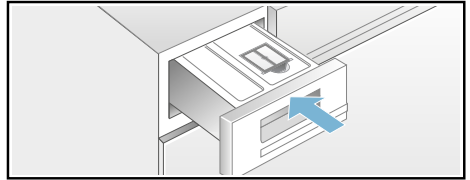
- 7 Turn the condensation container 180° onto its underside and remove the stopper that is fitted. Turn the condensation container back over and insert the stopper into the recess in the top of the condensation container.



- 8 Pull the filter out of the lock-in slot and place it into the recess in the top of the condensation container.



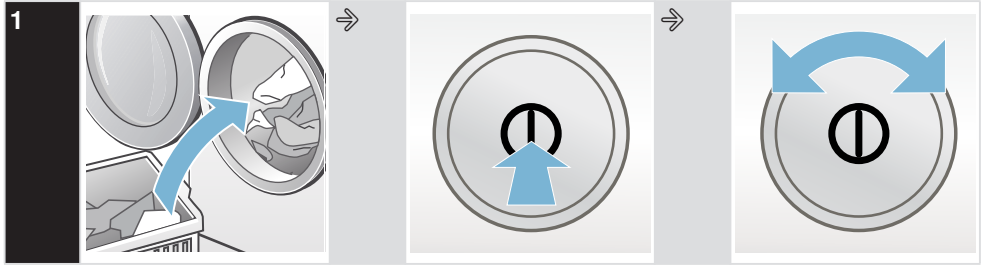
- 9 Slide in the condensation container until it clicks into place.



The condensation is now discharged via the drain hose into the waste-water system or into a wash basin

**Note:** If you want to drain the condensation water back into the condensation container, reverse these steps.

## The main points in brief

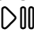


1 Load the laundry and close the door.

Switch the dryer on.

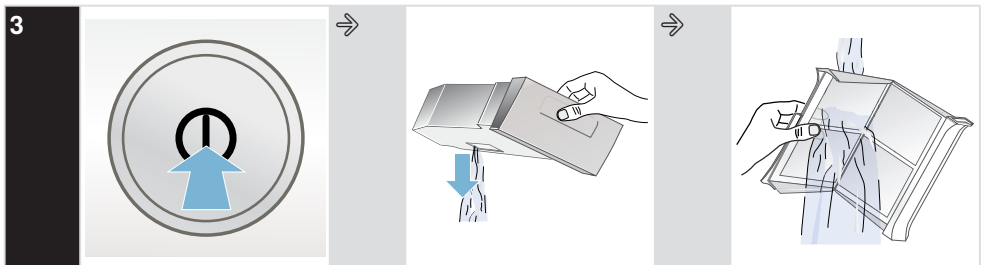
Select a programme, and adjust the programme presettings as needed.



2 Press the Start button .

Dry.

Remove the laundry.



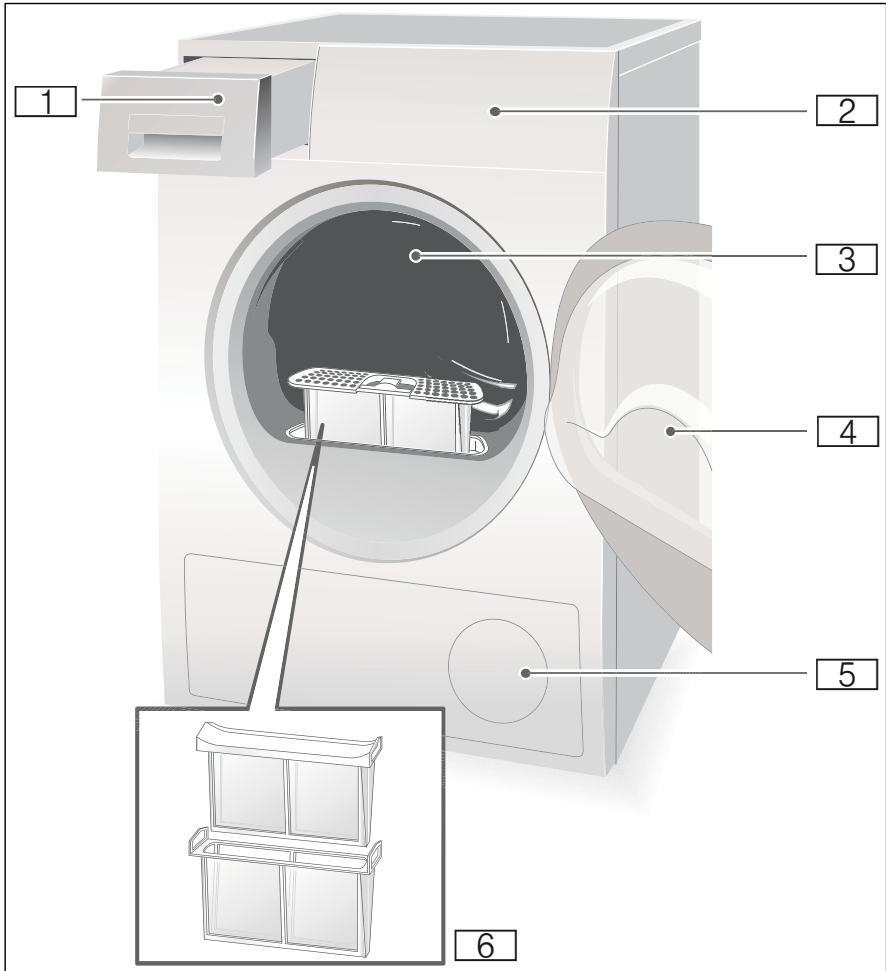
3 Switch the dryer off.

Empty the condensation container.

Clean the fluff filter.

## Familiarising yourself with your appliance

### Dryer



- 1 Condensate container
- 2 Control and display panel
- 3 Drum interior light (depending on the model)

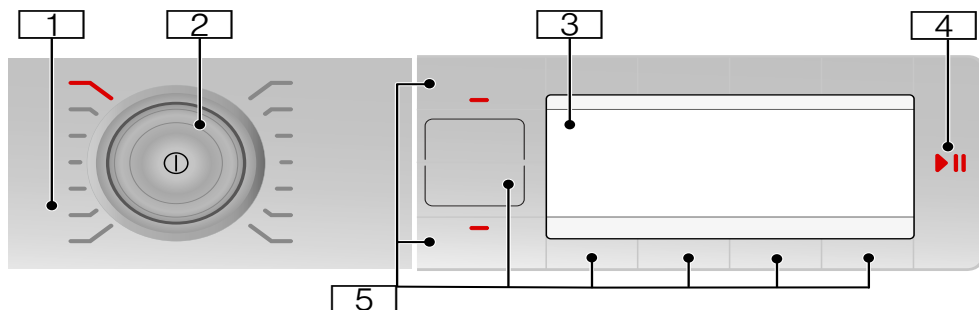
## en Familiarising yourself with your appliance

4 Dryer door

5 Air inlet

6 Fluff filter

## Control panel



1 Programmes → Page 36.

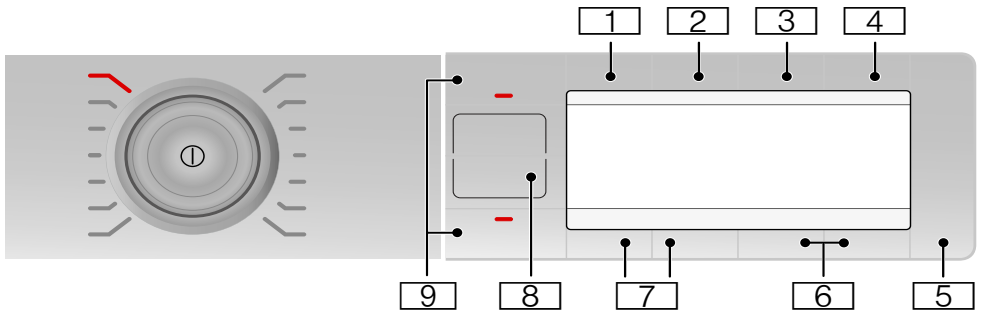
2 Programme selector and On/Off button.

3 Display panel with buttons → Page 36.

4 Start button for starting, pausing or cancelling the programme.

5 Buttons → Page 38.

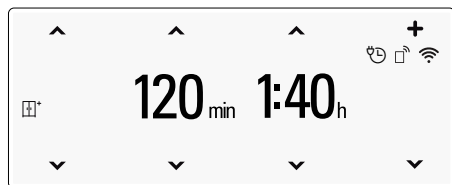
## Buttons






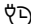


- 1 **Dryness level**
- 2 **Anti-Crease**
- 3 **Ready in**
- 4 **Options**
- 5 **Start or Pause**
- 6 **Press for 3 seconds to access settings**
- 7 **Selection buttons/childproof lock**
- 8 **Remote start**
- 9 **Memory**



For a detailed description of all buttons, see → Page 38 onwards.

## Display panel



Indicators/symbols	Description
<b>1:40h or 3h</b>	Expected programme length in hours and minutes, or programme delay in hours after selecting the "Ready in" time.
<b>120min</b>	Length of the Anti-Crease cycle or programme length for timed programmes.
<b>Heat exchanger is being rinsed</b>	The heat exchanger is cleaned automatically.
<b>Please empty condensate container</b>	Empty the condensation container; → Page 46.
<b>Please clean lint filter</b>	Clean the fluff filters; → Page 45.
	Childproof lock activated; → Page 38.
<b>Drying</b>	Programme progress
<b>Iron dry</b> 	
<b>C/board dry</b> 	
<b>C/board dry+</b> 	
<b>Finished/AntiCrease</b>	
<b>Finished, remove washing</b>	
	Remote start selected; → Page 38.
	The appliance is connected to the smart energy system (energy manager).



Indicators/symbols	Description
	<p><b>Off:</b> Wi-Fi is switched off and the appliance is not connected to your home network.</p> <p><b>Flashing:</b> The appliance is trying to connect to your home network.</p> <p><b>Lit:</b> Wi-Fi is switched on and the appliance is connected to your home network.</p>
	<p>Wi-Fi is switched on but a connection to your home network cannot be established.</p>

---

## Laundry

---

### Preparing the laundry

#### **Warning**

##### **Risk of explosion/fire!**

Remove any cigarette lighters and matches from pockets.

#### **Caution!**

The dryer drum and fabrics could be damaged.: Remove all objects from pockets and observe the following information:

- Tie cloth belts, apron strings, etc. together or use a laundry bag.
- Close zips, hooks and eyelets and buttons. Button up large items of laundry, such as covers.
- Remove any metal objects, such as paper clips, from pockets.
- To ensure a consistent drying result, sort laundry by fabric type and drying programme.
- Always dry very small items of laundry, e.g. babies' socks, together with large items such as towels.
- Knitted fabrics such as T-shirts and jerseys often shrink the first time they are tumble-dried. Use a gentle programme.
- Do not overdry easy-care laundry. This increases creasing of the laundry.

- Use timed programmes for single garments.
- Some detergents and care products, e.g. starch or softeners, contain particles which may be deposited on the moisture sensor. This may impair the sensor function and in consequence the drying result.

#### **Notes**

- When washing laundry to be tumble-dried, use the correct amount of detergent and care products as specified in the manufacturer's instructions.
- Clean the moisture sensor regularly → Page 58.

## Sorting washing according to:

- Suitable for tumble drying
- Dry at normal temperature
- Dry at low temperature
- Do not tumble-dry

**Note:** Do not load laundry from the washing machine directly into the tumble dryer. Sort the spun laundry before placing it in the dryer drum.

If you dry thin, thick and multi-layer fabrics together, they will dry to differing degrees. To achieve an even drying result, you should therefore only dry together laundry of the same type of fabric and structure. If you feel that the laundry is still too damp, you can select a timed programme for subsequent drying → Page 36.

### **Caution!**

Possibility of material damage to the dryer or laundry.: Do not tumble-dry the following fabrics:

- Laundry contaminated with oil.
- Unwashed fabrics.
- Items made from non-breathable fabrics (e.g. rubber-coated).
- Easily damaged fabrics such as silk, synthetic curtains.

---

## Programs and buttons













---

### Programmes

Programme and fabrics	Maximum load and programme settings/info
Name of the programme Which fabrics is the programme suitable for?	The maximum load is based on the dry weight of the fabrics <hr/> Possible programme settings
<b>Cottons</b> Hard-wearing fabrics, heat-resistant fabrics made of cotton or linen.	<b>8 kg</b>
<b>Easy Care</b> Textiles made of synthetic materials or blended fabrics.	<b>3.5 kg</b>
<b>Mix</b> Mixed load consisting of cotton and synthetic fabrics.	<b>3 kg</b>
<b>Delicates</b> For delicate washable items, e.g. made of satin, synthetic fibres or blended fabrics.	<b>2 kg</b>
<b>Wool in basket</b> Fabrics made from wool or a wool blend that are suitable for tumble drying. <b>Note:</b> Dry the laundry only using the basket for wools → Page 41.	<b>1.5 kg</b>
<b>Cold</b> Timed programme for all types of fabric except for wool and silk. All types of fabric. For freshening up or airing items of laundry that have not been worn frequently.	<b>3 kg</b> You can adjust the programme length using the Dryness level button.

<b>Warm</b>	<b>3 kg</b>
All types of fabric; time programme. Suitable for pre-dried or slightly damp laundry and for drying off multi-layered, thick laundry.	You can adjust the programme length using the Dryness level button.
<b>Shirts/Blouses</b>	<b>1.5 kg</b>
Non-iron shirts or blouses made of cotton, linen, synthetic fibres or blended fabrics.	
<b>Duvets</b>	<b>2.5 kg</b>
Clothing, pillows, quilts or bedspreads filled with synthetic fibres. Dry large items individually. Observe the care label.	
<b>Downs</b>	<b>1.5 kg</b>
Clothing, pillows, bedspreads or eiderdowns filled with down. Dry large items individually.	
<b>Sports</b>	<b>1.5 kg</b>
Weatherproof and outdoor clothing with a membrane coating and water-repellent fabrics.	
<b>Towels</b>	<b>6 kg</b>
Hard-wearing towels made of cotton.	
<b>Super 40</b>	<b>2 kg</b>
Synthetic fabrics and light cottons.	
<b>Hygiene</b>	<b>4 kg</b>
Hard-wearing items. <b>Note:</b> Particularly suitable for strict hygiene requirements.	

## Buttons

Buttons	Explanations and notes
<b>Note:</b> Not all buttons and their functions can be selected in all programmes.	
<b>Selection buttons</b>  	Select the setting you require from the list on the display panel.
 <b>(Dryness level):</b>	Select the dryness level (e.g. Cupboard Dry) or the drying time (20 mins up to 3 hrs 30 mins, depending on the model and programme). Select the dryness level according to the laundry to be dried.
	C/board dry+  Multi-layered, thick laundry that does not dry readily.
	C/board dry  Normal, single-layered laundry.
	Iron dry  Normal, single-layered laundry that still needs to be damp after drying and is suitable for ironing or hanging up.
 <b>(Anti-Crease)</b>	After the programme finishes, the drum moves at regular intervals to prevent creases. Automatic reduced ironing function can be set in 30-minute intervals up to 120 minutes.
 <b>(Ready in)</b>	The programme will end in between 1 h and 24 h. Set the "Ready in" time in increments of one hour to delay the start of the programme. The required number of hours after the programme ends is displayed on the display panel.
 <b>3 sec.</b> (Childproof lock)	You can activate or deactivate the childproof lock by pressing the two <b>selection buttons</b>   on the left at the same time and holding them for 3 seconds. <b>Note:</b> If you have activated the Remote start function and you then select the childproof lock, this will deactivate the Remote start function.
 <b>(Options):</b>	Press the button and the menu will be displayed on the display panel.

**Spin speed** 

For the spin class, set the spin speed at which the laundry has been spun in the washing machine. This permits the expected drying time to be indicated more accurately. Speeds of between 600 and 1800 rpm can be selected. Default setting: 1000 rpm

---

**Adjust dryness level** 

If your laundry is too damp after drying, you can fine tune the dryness levels, e.g. Cupboard Dry, using the drying degree button. The dryness level can be increased in three stages, from +1 to +3, by adjusting the drying degree.


Once you have adjusted the drying degree, this setting will be retained even after the dryer has been switched off.

---

**Low Heat** 

Low temperature for delicate fabrics, e.g. polyacrylic and elastane. May increase the length of the programme.

---

 **3 sec.**  
(Press for  
3 seconds to  
access  
settings):

---

Press the two selection buttons at the same time and hold them for 3 seconds. The menu will be displayed on the display panel.

---

**End signal or button signal**

Select the programme end signal volume or the button signal volume. Signal: Off – Quiet – Medium – Loud – Very loud.

Default setting: Loud

---

**Autom. switch off**

Time after which the dryer automatically switches off once the programme has ended: **Never**, **15**, **30** or **60** min. Default setting: 15 min

**Note:** If you have switched Wi-Fi on, the automatic switch-off is set to **Never**.

---

**Language**

Select the language you require on the display panel.

---



**(Remote)**

Enables the appliance to be started remotely via the Home Connect app.

Remote start remains enabled for 24 hours after it has been activated. It will be deactivated automatically if you do not start the programme via the Home Connect app during this time. If you carry out any operations on the appliance itself, such as opening the door or selecting a different programme, the remote start button will be deactivated for safety reasons.

**Note:** Remote start can only be activated if the appliance door is closed.

**Note:** Remote start cannot be activated if the childproof lock is on. Press and hold the button for more than 3 seconds to access the Home Connect settings .

---

M1 M2

You can save individual programme settings under Memory 1 and 2.

Select the required programme settings and press the M1 or M2 button for 3 seconds until the display panel shows **Memory programme 1** or **2 saved**. Your selected programme settings will be retained even after the dryer has been switched off.

Default setting: No Memory programme saved.

**Note:** If you have not saved a Memory programme, you will not be able to view it via the Home Connect app.

---



**(Start/Pause)**

Starts or pauses the programme.

---



## Operating the appliance

### Loading laundry and switching on the dryer

**Note:** The dryer must be correctly positioned and connected, → Page 19.



- 1 Place the laundry in the drum.
- 2 Press the ① button to switch the dryer on.
- 3 Close the dryer door.

#### **⚠ Caution!**

- Possibility of material damage to the dryer or laundry. Take care not to trap any laundry in the door.

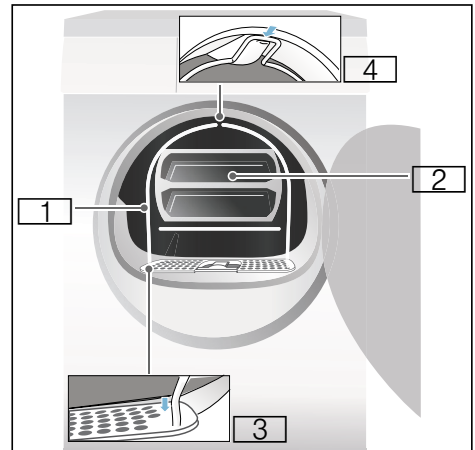
**Note:** The dryer drum is lit up after the door is opened and closed and once the programme has started. The drum interior light goes out on its own.

## The basket for woollens

**Note:** The basket for woollens is supplied with your dryer\* or it can be purchased as an accessory from the after-sales service.

#### **⚠ Caution!**

Risk of material damage to the dryer and fabrics.: Never operate the dryer if the basket for woollens is damaged.

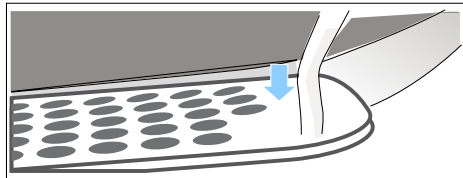


- 1 Basket for woollens
- 2 Insert for the basket for woollens
- 3 Recesses for mounting the basket for woollens
- 4 Notch for the basket for woollens

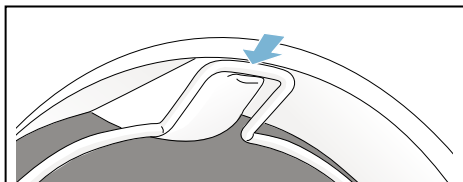
\* Depending on the model

## Drying with the basket for woollens

- 1 Insert the feet of the basket for woollens into the holes on the fluff filter.



- 2 Lean the basket for woollens against the upper notch.



The basket for woollens should now be firmly inserted in the drum.

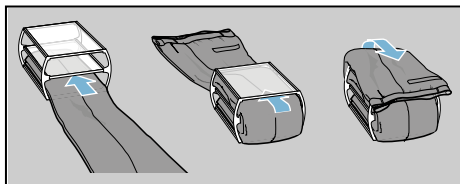
- 3 Place the required fabric in the insert of the basket for woollens

### Notes

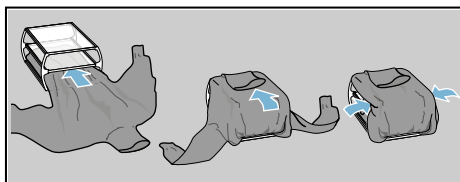
- Spin the fabrics before placing them in the insert.
- Place the laundry loosely in the insert. Do not squash the fabrics.

### Application examples:

#### 1 Trousers or skirt



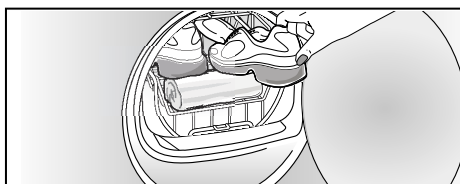
#### a) Pullover



#### b) Sports shoes

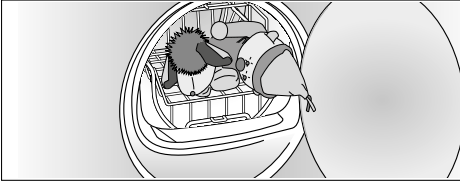
Place sports shoes in the basket for woollens **without** the insert. Pull out the tongues of the shoes and remove the insoles or heel cushions.

Roll up a towel and place it under the sports shoes to create an inclined surface. Place the shoes so that the heels are on the towel.



c) **Soft toys**

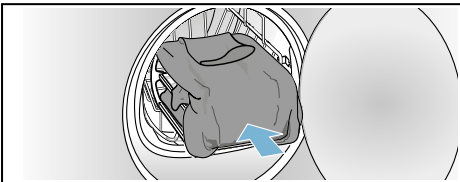
Dry soft toys in the basket for woollens without the insert. Only place as many soft toys in the basket for woollens as is possible without any falling out.



- 2 Place the insert or the sports shoes in the basket for woollens.

**⚠ Caution!**

- Risk of material damage to the fabrics. Place the fabrics in the insert of the basket for woollens so that they do not come into contact with the drum.



- 3 Use the programme selector to select the programme for the basket for woollens or a time programme.

- 4 Set the drying time.  
Thin woollen pullover: Approx. 1:20 hrs  
Thick woollen pullover: Approx. 1:30 hrs - 3:00 hrs  
Skirt: Approx. 1:00 hr - 1:30 hrs  
Trousers: Approx. 1:00 hrs - 1:30 hrs  
Gloves: Approx. 30 min  
Sports shoes: Approx. 1:30 hrs/with airing max. 2:00 hrs

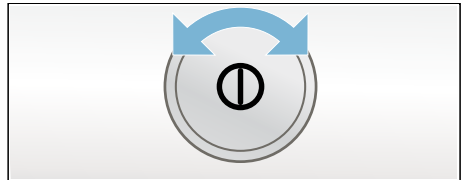
**Note:** For thicker or multi-layered fabrics, you must extend the drying time, as required, to achieve the required level of dryness.

- 5 Start the programme.
- 6 Remove the fabrics and switch off the dryer.

## Setting a programme

**Note:** If you have activated the childproof lock, you must deactivate it before you can set a programme, see → Page 38.

- 1 Select the required programme; detailed information on the programmes can be found from → Page 36 onwards.



## en Operating the appliance

- 2 Use the programme selector to set the required programme. The default programme settings for the selected programme appear in the display panel.

**Note:** Default programme settings are standard settings that are already defined when a programme is selected. After selecting a programme, you can see the default programme settings in the display panel.

- 3 If required, adjust the default programme settings. You can find detailed information on this from → Page 36 onwards.

## Starting the programme

Press the Start button.

**Note:** If you want to lock the programme to prevent it from being adjusted inadvertently, you can select the childproof lock, see → Page 38.

## Programme sequence

The programme status is displayed in the display field.

## Changing the programme or adding laundry

You can remove or add laundry and change or alter the programme at any time during drying.

- 1 To pause the programme, open the dryer door or press the Start button.
- 2 Add or remove laundry.
- 3 Select another programme or an additional function, if required.
- 4 Close the dryer door.
- 5 Press the Start button.

**Note:** The programme duration in the display panel is updated depending on the load and residual moisture in the laundry. The values displayed may change after the programme is changed or the load is adapted.

## Cancelling the programme

The programme can be interrupted at any time; to pause, open the dryer door or press the Start button.


### **Caution!**

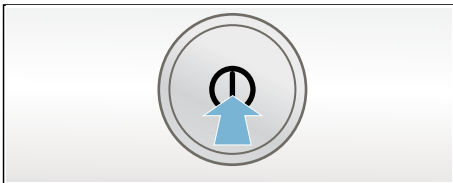
Risk of fire. Laundry may catch fire.: If you cancel the programme, you must remove the laundry items and spread them out so that the heat can disperse.

## Programme end

Finished, remove washing appears in the display panel.

## Removing laundry and switching off the dryer

- 1 Remove the laundry.
- 2 Press the  button to switch the dryer off.

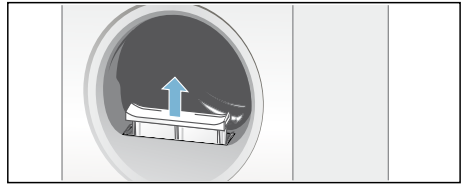


## Clean the fluff filter

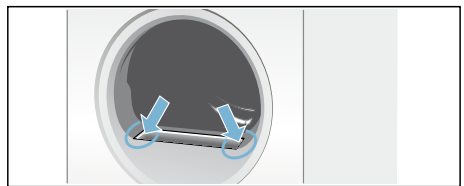
**Note:** During drying, fluff and hair from the laundry is trapped by the fluff filter. If the fluff filter is blocked or dirty, this reduces the flow of air, which prevents the dryer from achieving its maximum performance. Clean fluff filters also reduce energy consumption and the drying time.

Clean the fluff filter **after each** drying cycle:

- 1 Open the dryer door and remove all fluff from the door.
- 2 Pull out the two-part fluff filter.



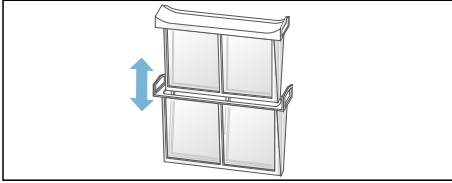
- 3 Remove the fluff from the recess in the fluff filter.



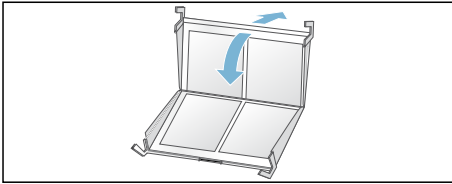
**Note:** Ensure that no fluff falls into the open shaft.

## en Operating the appliance

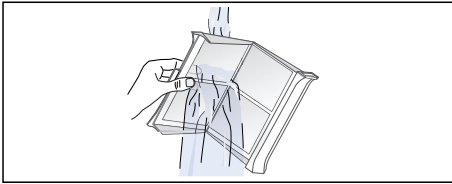
- 4 Pull apart the two-part fluff filter.



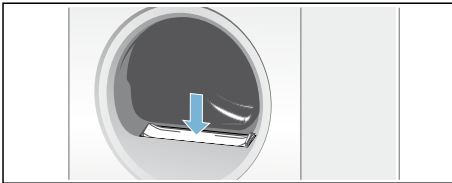
- 5 Open both filters and remove all the fluff.



- 6 Rinse away the fluff under warm, running water.



- 7 Dry the fluff filter, close it and reinsert the two-part fluff filter.



### **⚠ Caution!**

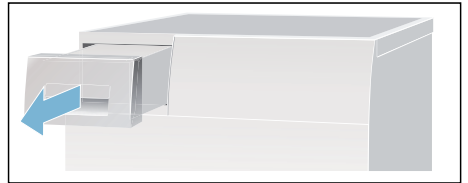
The dryer may be damaged.: Do not operate the dryer without a fluff filter or if the fluff filter is defective.

## Emptying the condensate container

By default, the condensation from the appliance runs into the condensate container.

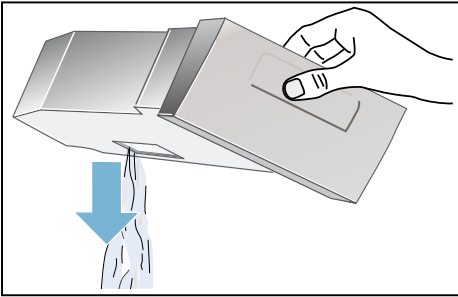
Alternatively, you have the option of discharging the condensation water\* supplied depending on the model. If you choose to discharge the condensation water into the waste-water system, you will not need to empty the condensate container during the drying programme or after each time you use the dryer.

- 1 Pull out the condensate container horizontally.



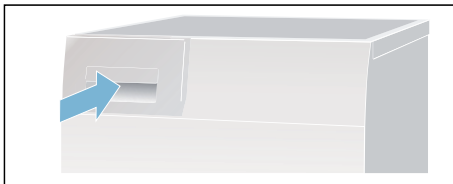
\* into the waste-water system via a drain hose

- 2 Pour out the condensation water.



**⚠ Caution!**

- Dirty condensation water may be harmful to your health and cause material damage. Condensation water is not suitable for drinking and may be contaminated with fluff. Do not drink the condensation water or reuse it.
- 3 Push in the condensate container until you feel it lock back into place in the dryer.



**Note:** The filter in the condensate container filters the condensation which is used during the dryer's automatic cleaning cycle. The filter is cleaned by emptying the condensation. Nevertheless, you should check the filter regularly for remaining deposits and remove them. See → Page 59.

---

## Home Connect

---

This appliance is Wi-Fi-capable and can be remotely controlled using a mobile device.

You can use the Home Connect app to do the following on your appliance from your mobile device:

- Set up programs and launch them.
- Adjust, activate and deactivate program settings.
- Query the status of programs.
- Adjust, activate and deactivate appliance settings.
- Switch off the appliance.

Before you can use the Home Connect functions, you will need to carry out the following steps:

- 1 Install the Home Connect app on your mobile device.
- 2 Register in the Home Connect app.
- 3 Connect your appliance to your home network automatically **or** manually (you only need to do this the first time).

## en Home Connect

### 4 Connect your appliance to the Home Connect app.

You can find information about the app on our Home Connect website [www.home-connect.com](http://www.home-connect.com)


Home Connect services are not available in every country. The availability of the Home Connect function depends on the availability of Home Connect services in your country. You can find information on this at: [www.home-connect.com](http://www.home-connect.com)

#### Notes

- Please observe the safety precautions in this instruction manual and make sure that these are complied with even when operating the appliance via the Home Connect app while you are away from home. You must also follow the instructions in the Home Connect app.
- You cannot use the Home Connect app to make changes while the controls on the appliance are being operated. However, you can use the Home Connect app to see any adjustments made directly on the appliance itself.

## Calling up the Home Connect menu

In the Home Connect menu, you can create and view network connections, reset network settings, activate/deactivate Wi-Fi and find other Home Connect functions.

- 1 Switch on the appliance.
- 2 Press and hold  (**Remote**) for at least 3 seconds.

**Aut. network log-in** appears in the display.

You are now in the Home Connect menu.

**Note:** Briefly press  (**Remote**) to exit the Home Connect menu.



## Connecting to the home network and the Home Connect app

Connect your appliance to the home network **automatically** or **manually** (you only need to do this the first time).

### Notes

- If your home network router has a WPS function, you can connect the appliance to your home network automatically.
- If your home network router does not have a WPS function, you need to connect the appliance to your home network manually.

You must then connect to the Home Connect app.

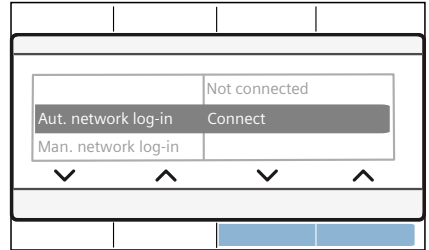
**Note:** To connect your appliance to the home network, **Wi-Fi** must be activated on the appliance. **Wi-Fi** is deactivated on the appliance by default and is activated automatically when you connect your appliance to your home network.


## Connecting to your home network automatically

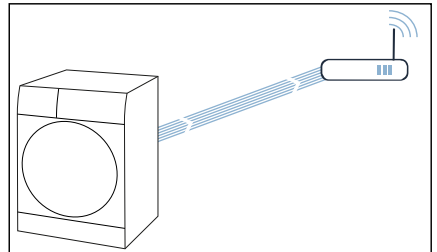
### Step 2.1

Ensure that you are in the Home Connect menu. → Page 48


- 1 Press **Connect**.



The appliance now attempts to connect to your home network.  flashes in the display.



- 2 Activate the WPS function on your home network router within the next 2 minutes.

If the appliance has connected to your home network successfully, **Connected** ✓ and  appear in the display and light up continuously.

## en Home Connect

**Note:** If you are not able to establish a connection, check whether your appliance is within range of your home network. Try connecting automatically again or connect your appliance manually.

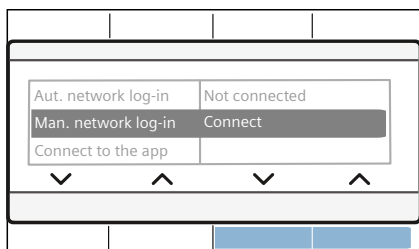
### Connecting to your home network manually

#### Step 2.2

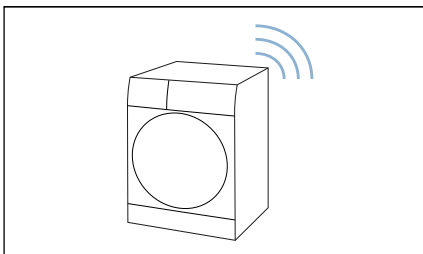
Ensure that you are in the Home Connect menu. → Page 48

Make sure that you have opened the Home Connect app and are logged in.

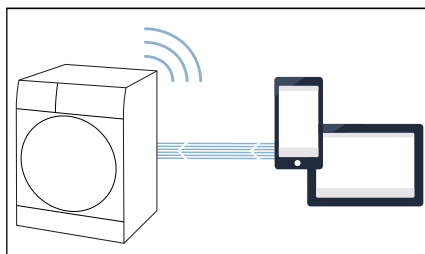
- 1 Press **Man. network log-in**.
- 2 Press **Connect**.




The appliance now sets up its own Wi-Fi network with the name (SSID) **HomeConnect**.




- 3 Call up the Wi-Fi setting on the mobile device.
- 4 Connect the mobile device to the **Home Connect** Wi-Fi network and enter the password (key) **HomeConnect**. Your mobile device now connects to the appliance. The connection process may take up to 60 seconds.



- 5 Once you have connected successfully, open the Home Connect  app on your mobile device and carry out the steps in the app.
- 6 In the Home Connect app, enter the network name (SSID) and password (key) for **your home network**.

7 Carry out the last steps in the Home Connect app to connect your appliance.

If the appliance has connected to your home network successfully, **Connected** ✓ and  appear in the display and light up continuously.

**Note:** If you are not able to establish a connection, check whether your appliance is within range of your home network. Try connecting manually again.

## Connecting to the Home Connect app

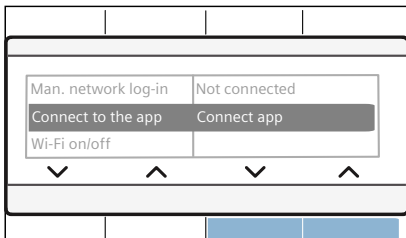
### Step 3

If your appliance is connected to your home network, you can connect it to the Home Connect app.

Ensure that you are in the Home Connect menu. → Page 48

Make sure that you have opened the Home Connect app and are logged in.

- 1 Press **Connect to the app**.
- 2 Press **Connect app**.



The appliance now attempts to connect to the Home Connect app.

- 3 Once your appliance is displayed in the app, carry out the last steps in the Home Connect app.

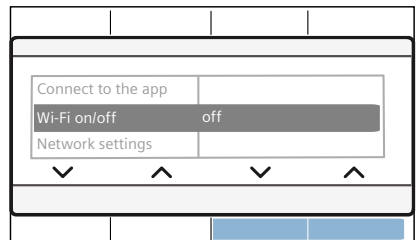
**Note:** If you were not able to establish a connection, check whether your mobile end device is within range of your home network or is connected to this. Try connecting to the Home Connect app again.

## Activating/deactivating Wi-Fi

If your appliance is already connected to your home network, you can activate or deactivate **Wi-Fi** on your appliance.

Ensure that you are in the Home Connect menu. → Page 48

- 1 Press **Wi-Fi on/off**.
- 2 Press **on** or **off**.



## Notes

- If you connect to your home network, Wi-Fi is activated automatically.
- If Wi-Fi is activated, the appliance will not switch itself off automatically.
- If Wi-Fi is switched off on the appliance, it is not possible to use the Home Connect app to start or control the appliance remotely.
- If Wi-Fi is switched off and your appliance was previously connected to your home network, this connection will be re-established automatically when Wi-Fi is switched back on.
- If you activate this function, the energy consumption increases in comparison to the values specified in the consumption value table.

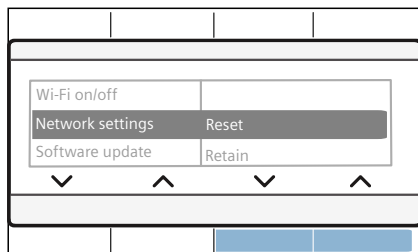
## Resetting your network settings

You can reset all of the network settings.

Ensure that you are in the Home Connect menu. → Page 48

- 1 Press **Network settings**.

- 2 Press **Reset**.



**Note:** If you want to operate your appliance via the Home Connect app again, you will need to reconnect it to your home network and to the Home Connect app.

## Updating the software

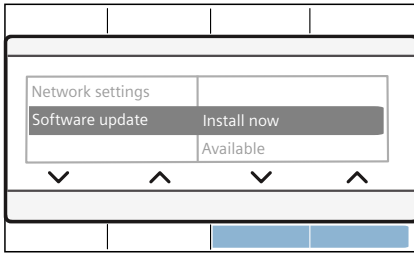
You can update the Home Connect software on your appliance. As soon as a new software update is available, a note appears in the display: **Software update**

Install the update directly via the **message in the display** or **manually** as follows:

Ensure that you are in the Home Connect menu. → Page 48

- 1 Press **Software update**.

## 2 Press **Install**.



**Note:** The software update may take several minutes. Do not switch the appliance off while updates are being installed.

**Note:** If no software update is available, **Not available** appears in the display.

## Energy management

You can connect your appliance to your smart energy system (Energy manager).

Once you have connected your appliance to the smart energy system (Energy manager) and activated the **Flex Start** function, you will be able to optimise your energy consumption because your appliance will not start up until your home photovoltaic system can provide sufficient energy or the energy tariff is good.

Further information and system requirements for using the Energy manager can be found at:

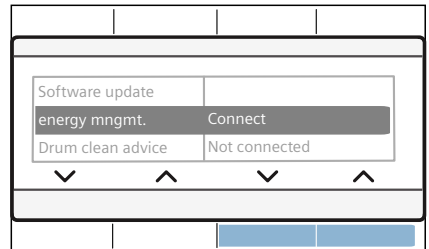
**[www.home-connect.com/energy-management](http://www.home-connect.com/energy-management)**

## Notes

- The smart energy system (Energy manager) must use the EEBus initiative communications standard.
- Before you start, read the smart energy system instruction manual to find out how to connect your appliance to the smart energy system (Energy manager).

1 Press **energy mngmt..**

2 Press **Connect**.




Your appliance now attempts to connect to the smart energy system (energy manager). If the appliance has connected successfully, **Connect** ✓ appears in the display.

3 Activate Flexstart if you want the smart energy system (Energy manager) to start up your appliance.


## Flex Start

Activate the **Flex Start** function to allow your smart energy system (Energy manager) to start your appliance once your home photovoltaic system is able to provide sufficient energy or the energy tariff is good.

**Note:** Your smart energy system (Energy manager) cannot start your appliance until it is connected to the appliance.

- 1 Select the programme you require.
- 2 Press  (**Ready in**).
- 3 Select the time period you require.

**Note:** The time period can be set in 1-hour increments up to 24 h.

- 4 Press  (**Start/Pause**) .

**Delayed start** appears in the display.

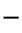
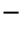

- 5 Press  (**Remote**).

**Flex Start** appears in the display.

The **FlexStart** function has now been activated and the appliance will wait to be remotely started by the smart energy system (Energy manager).

: **Ready in approx.** appears in the display. The smart energy system (energy manager) has set a time at which your appliance can start. The program will end after the specified time.

## Notes

- If the smart energy system (Energy manager) does not start your appliance, the programme will still be started before the set time period ends.  
The programme will end when the time period ends.
- For safety reasons, **Remote** and in turn the **Flex Start** function will be deactivated in the following circumstances:
  - Press  (**Start/Pause**).
  - Open the door.
  - Programme end.
  - Press  to switch off the appliance.
  - Power failure.If the **Flex Start** function is deactivated, the  (**Ready in**) will remain active.

## Adding more laundry or removing laundry:

**Note:** If the **Flex Start** function has already been activated but the programme has not yet started, you will still be able to load more laundry or remove some from the drum.

- 1 Press ▷||| (**Start/Pause**) .
- 2 Open the door.
- 3 Add or remove laundry.
- 4 Close the door.
- 5 Press ▷||| (**Start/Pause**) .
- 6 Press 📶 (**Remote**).

The **FlexStart** function has now been activated and the appliance will wait to be remotely started by the smart energy system (Energy manager).

## Information on data protection

When your appliance is connected for the first time to a Wi-Fi network, which is connected to the Internet, your appliance transmits the following categories of data to the Home Connect server (initial registration):

- Unique appliance identification (consisting of appliance codes as well as the MAC address of the installed Wi-Fi communication module).
- Security certificate of the Wi-Fi communication module (to ensure a secure data connection).
- The current software and hardware version of your household appliance.
- Status of any previous resetting to factory settings.

This initial registration prepares the Home Connect functions for use and is only required when you want to use these Home Connect functions for the first time.

**Note:** Ensure that the Home Connect functions can be used only in conjunction with the Home Connect app. Information on data protection can be accessed in the Home Connect app.

## **Declaration of Conformity**

Gaggenau Hausgeräte GmbH hereby declares that the appliance with Home Connect functionality meets the basic requirements and other relevant provisions of the Directive 2014/53/EU.

A detailed RED Declaration of Conformity can be found online at [www.gaggenau.com](http://www.gaggenau.com) among the additional documents on the product page for your appliance.



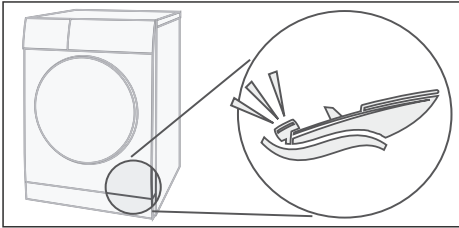
2.4 GHz band: max. 100 mW



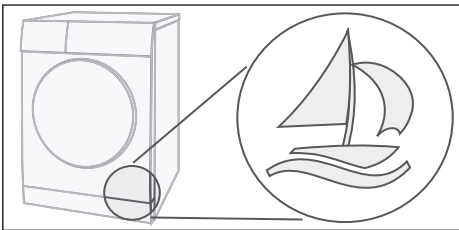
## Noise

**Note:** During drying, particularly in the initial phase, operation of the appliance results in noise from the compressor and pump. This is perfectly normal and does not impair proper functioning of the appliance.

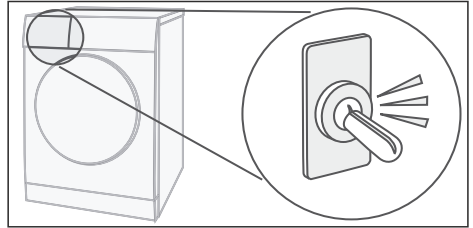
From time to time, the compressor in the dryer generates a humming noise. However, the volume may vary depending on the programme and progress of the drying process.



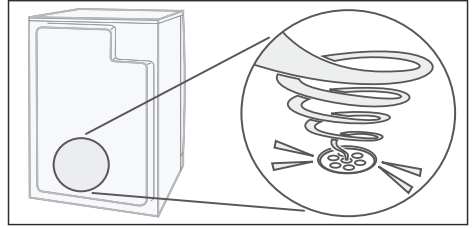
Every now and then, the compressor is ventilated. This creates a whirring noise.



The automatic cleaning of the dryer causes a clicking sound.



The condensation is pumped into the condensate container by a pump. This generates pumping noises.



---

## Cleaning

---

### Cleaning the dryer and the control panel

#### **⚠ Warning**

##### **Risk of death!**

There is a risk of electric shock as the dryer is operated with electricity.

Disconnect the dryer from the mains before cleaning.

Clean the dryer using only water and a soft, damp cloth.

Remove all detergent residue, spray residue or other residues immediately. Do not use cleaning agents or agents for pre-treating laundry (e.g. prewash sprays, stain removers). Do not use high-pressure cleaners or steam jet cleaners to clean your appliance.

### Cleaning the moisture sensor

**Note:** The dryer is equipped with a stainless-steel moisture sensor. The moisture sensor measures how damp the laundry is.

After long periods of usage the moisture sensor may become covered by a fine layer of limescale or residues of detergents and care products. Such residues must be removed regularly as the sensor function and in consequence the drying result may be impaired.

Open the door and clean the moisture sensor with a coarse sponge.



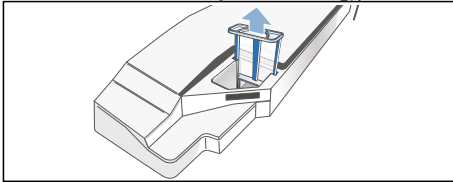
#### **⚠ Caution!**

Moisture sensor may be damaged.: Do not clean moisture sensors with abrasives and steel wool.

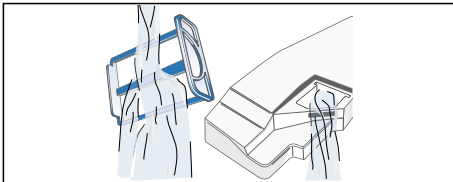
## Cleaning the filter in the condensate container

**Note:** The filter in the condensate container cleans the condensation water that is used during the dryer's automatic cleaning cycle.

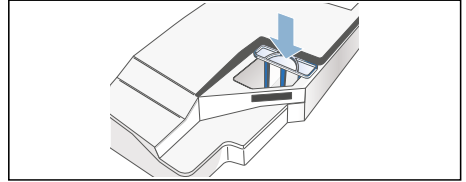
- 1 Pull out the condensate container horizontally.
- 2 Pour out the condensation water.
- 3 Remove the filter.



- 4 Clean the filter under warm, running water or in the dishwasher.



- 5 Push in the filter until you feel it lock into place.




### **⚠ Caution!**

- The dryer may be contaminated with fluff and thus become damaged. Only operate the dryer with the filter inserted.
- 6 Push in the condensate container until you feel it lock into place.

---

## Faults – what to do?

---

Faults	Cause/remedy
<b>Please empty condensate container</b> in the display panel and drying was interrupted.	<ul style="list-style-type: none"><li>● Empty the condensation container and press the Start button → Page 46.</li><li>● If the optional condensation drain* has been installed, the drain hose may be blocked or kinked. Check the hose for deposits and flush it through. Lay the hose without any kinks.</li></ul>
<b>Please clean lint filter</b> on the display panel.	Clean the fluff filter and press the Start button → Page 45.
<b>Heat exchanger is being rinsed</b> on the display panel.	Not a fault. The heat exchanger is being cleaned automatically. Do not pull out the condensation container while this is displayed.
The dryer will not start.	<ul style="list-style-type: none"><li>● Mains plug plugged in or fuse/circuit breaker checked?</li><li>● Programme selected? Select a programme.</li><li>● Dryer door open? Close the door.</li><li>● Is the childproof lock activated? Deactivate child-proof lock.</li><li>● "Ready in" time selected? Programme starts after a delay → Page 38.</li></ul>
 on the display panel.	Wi-Fi is switched on but a connection to your home network cannot be established. Check whether your home network is available or try to connect to your home network again.
Home Connect is not working.	<ul style="list-style-type: none"><li>● You can find solutions to problems with Home Connect at <a href="http://www.home-connect.com">www.home-connect.com</a>.</li><li>● The availability of the Home Connect functionality depends on the availability of the Home Connect Services in your country. Home Connect Services are not available in every country – for further information please check: <a href="http://www.home-connect.com">www.home-connect.com</a>.</li></ul>

---

\* Depending on the model

Faults	Cause/remedy
Creasing.	<ul style="list-style-type: none"> <li>● Creasing occurs when you have exceeded the maximum load or selected the wrong programme for the type of fabric. All the required information can be found in the programme table → Page 36.</li> <li>● Remove clothes immediately after drying; creasing will occur if they are left in the drum.</li> </ul>
Water is leaking out.	Not a fault; the dryer may be positioned on an incline. Level the dryer.
Programme duration displayed changes during drying.	Not a fault. The moisture sensors detect the remaining moisture in the load and adjust the programme length accordingly (except timed programmes).
Laundry is not dried properly or is still too damp.	<ul style="list-style-type: none"> <li>● After the programme has ended, warm laundry feels damper than it actually is. Spread the laundry out and allow the heat to disperse.</li> <li>● Fine tune the dryness level – this extends the drying time but does not increase the temperature. Your laundry will become drier → Page 38.</li> <li>● Select a programme with a longer drying time or increase the dryness level. This does not increase the temperature.</li> <li>● Select a timed programme to add extra drying time for laundry that is still damp → Page 36.</li> <li>● If you have exceeded the maximum load for the programme, the laundry may not be dried properly.</li> <li>● Clean the moisture sensor in the drum. The sensor may become covered in a fine layer of limescale or detergent and care product residue, which then impairs its performance. This prevents your laundry from being dried properly → Page 58.</li> <li>● Drying has stopped as a result of a power cut, because the condensation container is full or because the maximum drying time has been exceeded.</li> </ul> <p><b>Note:</b> –See also the laundry tips → Page 34.</p>

\* Depending on the model

## en What to do in the event of a fault

Faults	Cause/remedy
Drying time too long?	<ul style="list-style-type: none"><li>● The fluff filter may be clogged, which will make the drying time longer. Clean the fluff filter.</li><li>● If the air inlet on the dryer is blocked or not freely accessible, this may increase the drying time. Make sure that the air inlet remains unobstructed.</li><li>● The optimum ambient temperature for drying is between 15 °C and 30 °C. Outside of this range, the drying time may increase.</li><li>● Insufficient air circulation in the room may increase the drying time. Ventilate the room.</li></ul>
Display panel goes out and Start button flashes.	Not a fault. Energy saving mode is active → Page 18.
Residual water in the condensation container despite the dryer being connected to the condensation drain*.	Not a fault. If the condensation drain is installed, residual water remains in the condensation container due to the dryer's self-cleaning function.
Humidity in the room is increasing.	Not a fault. Make sure the room is adequately ventilated.
Power failure.	The drying programme is stopped. Remove the laundry and spread it out or restart the programme.
Unusual noises when drying.	Not a fault. Noises are produced by the automatic cleaning of the heat exchanger → Page 57.
The dryer feels cold despite drying.	Not a fault. The dryer can dry effectively at low temperatures using a heat pump.

\* Depending on the model

**Note:** If you cannot rectify the fault yourself by turning the dryer off and then on again, please contact our after-sales service.

---

## Customer service

---

### After-sales service

If you cannot rectify the fault yourself (faults, what to do?), please contact our after-sales service. We will always find an appropriate solution to avoid unnecessary visits by engineers.

The contact information for your nearest after-sales service can be found here or in the enclosed after-sales service directory.

Please provide after-sales service with the dryer's product number (E-no.) and production number (FD).

E-Nr. _____ FD _____
----------------------

You can find this information on the inside of the dryer door or on the rear of the dryer.

### **Trust the expertise of the manufacturer.**

Contact us. You can therefore be sure that the repair is carried out by trained service technicians who carry original spare parts.

---

## Consumption values

---

### Consumption values table

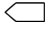
Programme	Spin speed used for spinning the laundry	Duration**		Energy consumption**	
		8 kg	4 kg	8 kg	4 kg
<b>Cottons</b>					
Cupboard dry*	1400 rpm	126 min	80 min	1.24 kWh	0.70 kWh
	1000 rpm	148 min	94 min	1.46 kWh	0.82 kWh
	800 rpm	170 min	108 min	1.68 kWh	0.94 kWh
Iron dry*	1400 rpm	98 min	62 min	0.98 kWh	0.55 kWh
	1000 rpm	115 min	73 min	1.15 kWh	0.65 kWh
	800 rpm	132 min	84 min	1.32 kWh	0.74 kWh
<b>Easy Care</b>		<b>3.5 kg</b>		<b>3.5 kg</b>	
Cupboard dry*	800 rpm	54 min		0.43 kWh	
	600 rpm	66 min		0.53 kWh	

\* Programme setting for testing in accordance with the applicable EN61121 standard.

\*\* The values may differ from those specified, depending on the type of fabric, composition of laundry to be dried, residual moisture in the laundry, the degree of dryness that has been set, the amount of laundry being loaded, the environmental conditions, and any additional functions that have been activated.

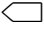


## Most efficient programme for cotton fabrics

The following "standard cottons programme" (identified with ) is suitable for drying normal, wet cotton laundry and is most efficient

in terms of its combined energy consumption for drying wet cotton laundry.

### Standard programme for cottons in accordance with current EU regulation 932/2012

Programme + Drying level	Load	Energy consumption	Programme duration
 Cottons + Cupboard dry	8 kg/4 kg	1.46 kWh/0.82 kWh	148 min/94 min

Programme setting for testing and energy labelling in accordance with Directive 2010/30/EU

---

## Technical specifications

---

**Dimensions:**

85 x 60 x 60cm

Height x width x depth

**Weight:**

Approx. 57 kg

**Maximum load:**

8 kg

**Condensation container:**

4.6 l

**Mains voltage:**

220 - 240 V

**Connected load:**

Max. 1000 W

**Fuse:**

10 A

**Drum interior light\***

**Ambient temperature:**

5 - 35 °C

**Power consumption when switched off:**

0.13 W

**Power consumption when left on:**

0.13 W

**Power consumption when networked (Wi-Fi) in standby mode/duration:**

1.98 W / 20 mins

\* depending on the model



Gaggenau Hausgeräte GmbH  
Carl-Wery-Straße 34  
81739 München  
GERMANY  
[www.gaggenau.com](http://www.gaggenau.com)

9001411531  
9808

**GAGGENAU**

