



BO470112

2 x enamel baking tray, suit. pyrolytic clean
1 x rotary spit
1 x glass pan
1 x grill shelf
1 x grill tub with grid
1 x pluggable meat probe

BS020002:

Set of 2 pizza paddles

GN340230:

Gastronorm roaster GN 2/3

BA016105:

1 telescopic shelf rail, for 60cm oven

BA026105:

Grill tray, for oven BO47*

BA026115:

Baking tray, for 60cm oven

BA036105:

wire rack, for 60cm oven

BA046117:

Glass tray, for 60cm oven

BA056115:

Heating elem. 230 V, for 60cm oven

BA056133:

Baking stone for 60 cm oven

built-in oven 400 series

60 x 60 cm, door hinge: right, Stainless steel
behind glass

BO470112

- Handleless door / automatic door opening
- Pyrolytic cleaning programme heats up to 485 °C
- 17 heating methods with core temperature probe, rotisserie spit and baking stone function
- Pyrolytic system
- 17 heating methods, with core temperature probe, rotisserie spit and baking stone function
- TFT touch display
- Panel-free appliance with surface control module
- Electronic temperature control from 30 °C to 300 °C
- Net volume 76 litres

Heating methods

Hot air.

Eco hot air. Top + bottom heat. Top + 1/3 bottom heat. Top heat. 1/3 top + bottom heat. Bottom heat. Hot air + bottom heat. Hot air + 1/3 bottom heat. Full surface grill + circulated air. Full surface grill. Compact grill. Baking stone function. Roaster function. Dough proofing. Defrosting. Keeping warm.

Handling

Automatic door opening.

Rotary knob and TFT touch display operation.

Clear text display.

Option to save individual recipes (incl. core temperature probe).

Information key with use indicators.

Side-opening door opens up to 180° angle.

Features

Rotisserie spit.

Baking stone socket.

Actual temperature display.

Rapid heating.

60 W halogen light on the top.

2 x 10 W halogen light on the side.

Enamelled side shelf supports with 4 tray levels, pyrolysis-safe.

The use of the Home Connect functionality depends on the Home Connect services, which are not available in every country. For further information please check: home-connect.com.

Safety

Thermally insulated door with quadruple glazing.

Child lock.

Safety shut-off.

Cooled housing with temperature protection.

Cleaning

Pyrolytic system.

Gaggenau enamel.

Heated catalyser to clean the oven air.

Planning notes

Door hinge not reversible.

The façade of the appliance extends 47 mm from the furniture cavity.

When planning a corner solution, pay attention to the 90° door opening angle.

To achieve the 550 mm installation depth, the connection cable needs to follow the slanted edge on the lower right hand corner of the housing.

The mains socket needs to be planned outside the built-in niche.

Connection

Energy efficiency class A at a range of energy efficiency classes from A+++ to D.

Total connected load 3.7 KW.

Plan a connection cable.

Power consumption standby/display off 0.5 W.

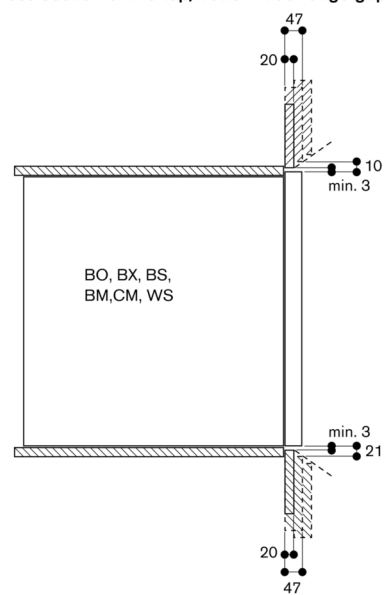
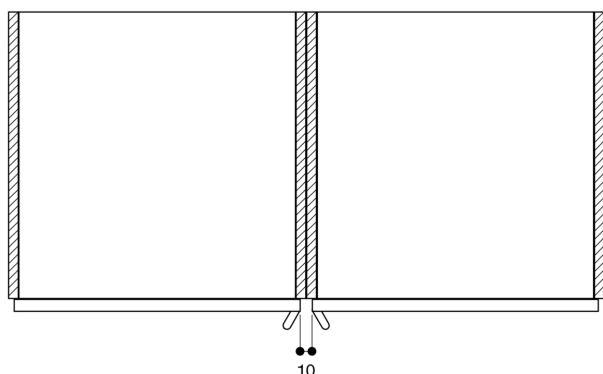
Power consumption standby/network 1.4 W.

Time auto-standby/network 20 min.

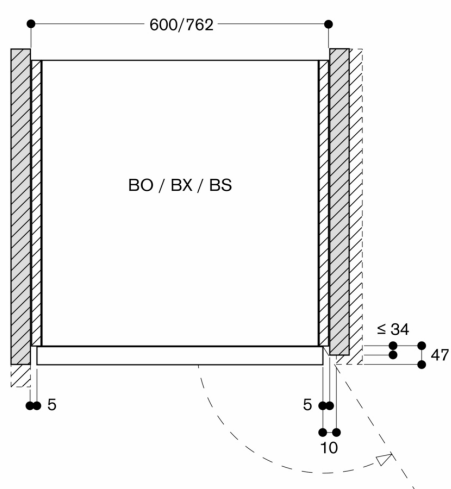
Please check the user manual for how to switch off the WiFi module.

Cross section of the top/bottom door edge gaps

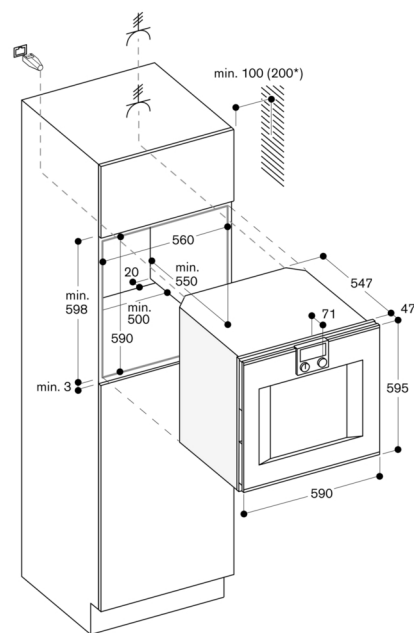
When installed next to each other



Air inlet cross section at the door edges



Measurements in mm



* 200 mm in conjunction with BA 016