



**BS485112**

1 x outlet hose 3m  
1 x grid  
1 x pluggable meat probe  
1 x water inlet hose 3m  
punched  
1 x STS tray  
unpunched  
40 mm deep  
4 x cleaning cartridge

**BA010301:**

Telescopic racks for combi-steam oven

**BA020361:**

Container st. steel unperf

**BA020370:**

Container st. steel perf

**BA020381:**

Container non-stick unperf

**BA020390:**

Container non-stick perf

**BA046117:**

Glass tray, for 60cm oven

**CLS10040:**

Cleaning cartridge, 4 pcs.

**GN010330:**

GN-adapter

**GN114130:**

GN insert unperf, st. steel, GN1/3, 40mm

**GN114230:**

GN insert unperf, st. steel, GN2/3, 40mm

**GN124130:**

GN insert perf, st. steel, GN1/3, 40mm

**GN124230:**

GN insert perf, st. steel, GN2/3, 40mm

**GN340230:**

Gastronorm roaster GN 2/3

**GF111100:**

Water descaling system

**GF121110:**

Filter cartridge for descaling system

**GZ010011:**

inlet and outlet hose extension

## Built-in compact oven with steam function 400 series

76 x 45 cm, Door hinge: Left

**BS485112**

Handleless door / automatic door opening

Fixed inlet and outlet water connection

Cleaning system, fully automatic

Steaming without pressure

Hot air 30 °C to 230 °C can be combined with chosen humidity level of 0%, 30%, 60%, 80% or 100%

Sous-vide cooking with accurate temperature regulation

Full surface grill behind glass ceramic, combinable with circulated air up to 230 °C and steam

TFT touch display

Panel-free appliance with surface control module

Net volume 50 litres

### Heating methods

#### Handling

Automatic door opening.

Rotary knob and TFT touch display operation.

Clear text display.

Option to save individual recipes (incl. core temperature probe).

Information key with use indicators.

Side-opening door opens up to 180° angle.

#### Features

Full surface grill 2000 W behind glass ceramic.

Steam removal.

Misting.

Actual temperature display.

Automatic boiling point detection.

Capacity display for filter cartridge (if connected to GF 111 100 descaling system).

Hygienic stainless steel cooking interior.

3 tray levels.

The use of the Home Connect functionality depends on the Home Connect services, which are not available in every country. For further information please check: [home-connect.com](http://home-connect.com).

#### Safety

Child lock.

Safety shut-off.

Cooled housing with temperature protection.

#### Cleaning

Cleaning programme, fully automatic.

Drying programme.

Strainer filter, removable.

Demo cleaning programme.

#### Planning notes

Door hinge not reversible.

No other electrical appliances should be installed above the BS.

At no point may the outlet hose be positioned higher than the bottom edge of the appliance.

The outlet hose must also be at least 100 mm lower than the appliance outlet (see drawing "drainage connection").

Inlet hose can be extended once.

The outlet hose must not be longer than a maximum of 5 m.

The water connection (1) for the inlet hose must always be accessible and not located directly behind the appliance.

The connection of the outlet hose to the siphon (2) must not be directly behind the appliance and should be accessible.

The descaling system GF 111 100 (3) must be installed when connecting the appliance if the water hardness exceeds 7° dH.

The façade of the appliance extends 47 mm from the furniture cavity.

When planning a corner solution, pay attention to the 90° door opening angle.

The mains socket needs to be planned outside the built-in niche.

#### Connection

Energy efficiency class A at a range of energy efficiency classes from A+++ to D.

Total connected load 3.1 KW.

Only cold water connection.

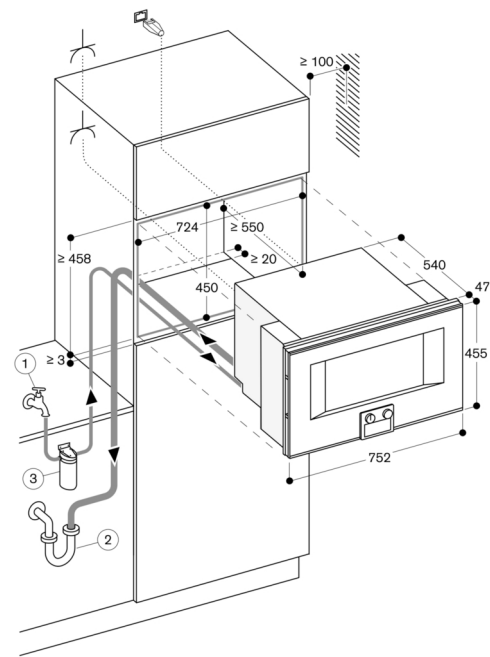
Connecting cable 1.8 m with plug.

Power consumption standby/display off 0.5 W.

Power consumption standby/network 1.8 W.

Time auto-standby/network 20 min.

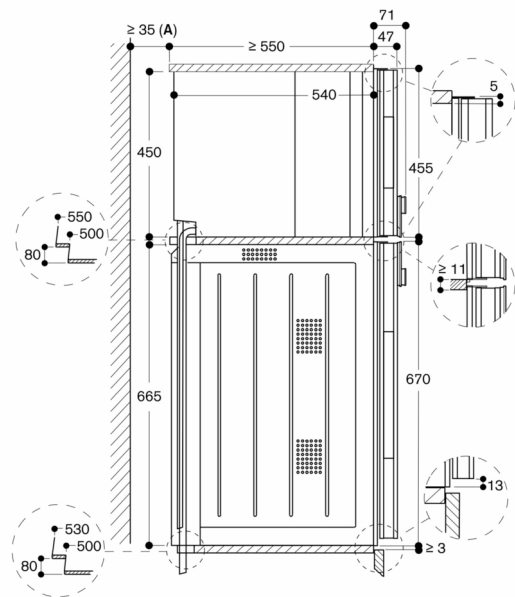
Please check the user manual for how to switch off the WiFi module.



Socket

measurements in mm

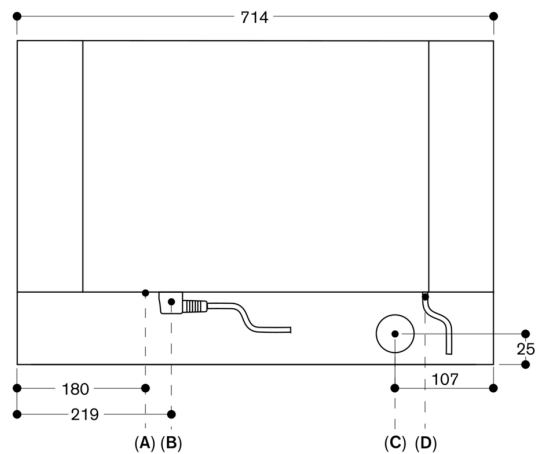
Side view of BS 484/485 above BO



A: Only required if the water hoses for the BS steam oven cannot be accommodated in the corner recesses of the appliances.

measurements in mm

View from rear



A: LAN connection  
B: Electric terminal box  
C: Water outlet  
D: Cold water inlet

measurements in mm