



Color Variants

RS295355
With fresh cooling close to 0 °C
Freestanding, full glass door in
Gaggenau Anthracite

Included accessories

2 x cold accumulator.
1 x egg tray.

RS295355
Side-by-Side 200 series
With fresh cooling close to 0 °C
Freestanding, full glass door in
Gaggenau Anthracite
Ice and water dispenser, black
Width 91.2 cm, height 175.6 cm



4 climate zones incl. fresh cooling
close to 0 °C and fresh cooling
Integrated ice maker with fixed inlet
water connection
Illuminated dispenser for ice cubes,
crushed ice and chilled water
Net volume 541 litres

Handling

Electronic temperature control with
temperature display.
Touch keys.

Technical Features

Dynamic cold air distribution.
Automatic defrosting with defrost water
evaporation.
Open-door and malfunction alarm.
Child lock.
Rest mode.

Cooling

Fast cooling.
Temperature adjustable from +2 °C to
+8 °C.
4 safety glass shelves, 3 of which
are height adjustable, 1 even without
removing it.
Wine and champagne rack for 4 bottles,
removable.
2 large door racks for bottles, 1 of
which is height adjustable.
4 door racks, 2 of which are height
adjustable.
LED lighting.
1 full width drawer.
Activated charcoal air filter.
Net volume 368 litres.

Fresh cooling close to 0 °C

1 full width fresh cooling drawer close
to 0 °C.
Ideal for meat, fish and poultry.

Fresh cooling

1 full width fresh cooling drawer.
Humidity can be adjusted manually.
Ideal for fruit and vegetables.
Net volume 26 litres.

Freezing

No-frost technology with fast freezing.
Temperature adjustable from -14 °C to
-24 °C.
Large 4-star freezer compartment.
2 small 2-star areas.
Freezing capacity 12 kg/24 h.
Storage time after a malfunction 12 h.
3 safety glass shelves, 2 of which are
height adjustable.
2 large freezer drawers.
All freezer drawers and safety glass
shelves can be removed.
4 door racks.

Ice and water dispenser

Light can be switched on separately.
Suitable also for large drinking vessels.
Ice maker integrated in the freezer
compartment, with fixed inlet water
connection.
Can be switched off.
Ice cube production approx. 1 kg/24 h.
Ice cubes and crushed ice.
Removable ice storage container with
approx. 2.3 kg capacity.
Ice water supply approx. 1 litres.

Consumption data

Energy efficiency class A++ at a range
of energy efficiency classes from A++
+ to D.
Energy consumption 348 kWh/year.

Characteristics

Built-in / Free-standing
Free-standing
Number of compressors
1
**Number of independent cooling
systems**
2
Width of the product
912
Height
1756
Depth of the product
732
Net weight
162.765
**Required niche size for installation
(HxWxD)**
Door panel options
Not possible
Door hinge
left and right
**Number of Adjustable Shelves in fridge
compartment**
3
Shelves for Bottles
Yes
Frost free system
Interior ventilator
No
Reversible Door Hinge
No
Length electrical supply cord
240
Noise level
42
Multi-Flow Air Tower
Yes
Fast cooling switch
Yes
Fast freezing switch
No
Carbon Air Filter
No
Temperature Controlled Drawer
No
Humidity Control Drawer
No
Number of Door Bins - Refrigerator
5
Door bin adjustability - Refrigerator
No
Tilt-out door bins in fridge
Yes
Number of Gallon storage
2
No. of shelves in fridge
4
Number of shelves - Freezer
2
Shelf Adjustability - Freezer
Yes
Capacity of Water Tank
1.0
Connection Rating
190
Fuse protection
10
Voltage
220-240
Frequency
50-60
Energy consumption
Freezing capacity
Energy efficiency rating
A++
**Energy consumption annual - NEW
(2010/30/EC)**
348.00
**Refrigerator Net capacity - NEW
(2010/30/EC)**
368
**Freezer Net capacity - NEW (2010/30/
EC)**
173
Frost free system
Freezing capacity) - NEW (2010/30/EC)
12
**Storage Period in Event of Power
Failure (h)**
12
Approval certificates
CE, EurAsian, VDE

Noise level 42 dB (re 1 pW).

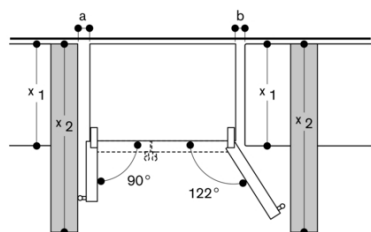
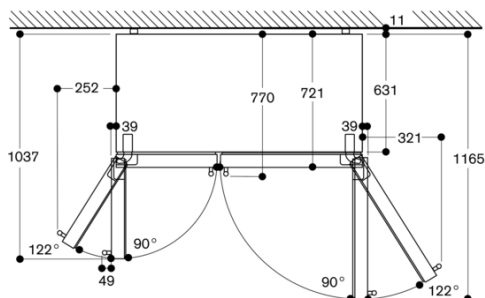
Planning notes

Wall recess of 11 mm necessary.
Front and back casters height
adjustable from the front by 15 mm.
Door opening angle of both doors
122°, freezer zone useable at 90°.
The socket and shut-off valve must
be planned next to the appliance and
always be accessible.
If the water pressure exceeds 0.8 MPa
(8 bar), connect pressure relief valve
between water tap and hose set.
Weight when empty 163.

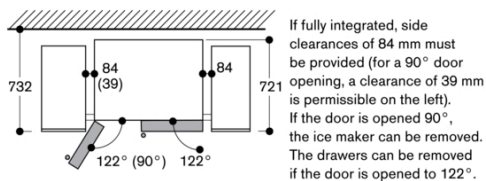
Connection

Total connected load 0.190 KW.
Connecting cable 2.4 m with plug.
Water inlet.
Supply hose 3.0 m with 3/4 " connection.
Water pressure 2 to 8 bar.

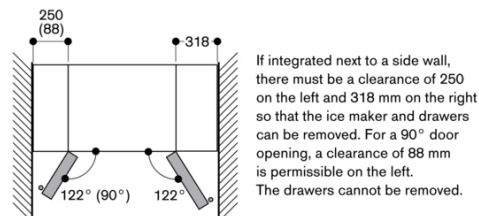
GAGGENAU



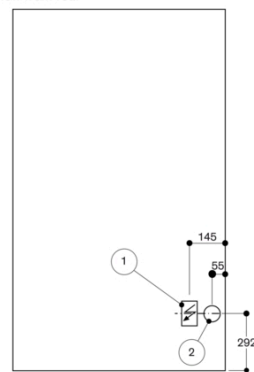
x ₁ (unit depth)	a	b
600	39	39
650	39	53
700	39	85
x ₂ (wall)	88	321



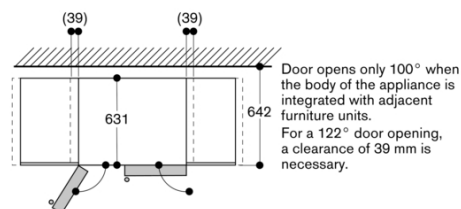
If fully integrated, side clearances of 84 mm must be provided (for a 90° door opening, a clearance of 39 mm is permissible on the left). If the door is opened 90°, the ice maker can be removed. The drawers can be removed if the door is opened to 122°.



View from rear



- (1) Electricity connection on the appliance
(2) Water connection on the appliance



RS295355
Side-by-Side 200 series
With fresh cooling close to 0 °C
Freestanding, full glass door in
Gaggenau Anthracite
Ice and water dispenser, black
Width 91.2 cm, height 175.6 cm
2022-01-31
Page 3

