



Color Variants

VL414111
stainless steel
Width 11 cm

VL414111
Vario downdraft ventilation 400 series
stainless steel
Width 11 cm
Air extraction / Air recirculation
Without motor and control knob



Highly efficient ventilation system at the cooktop
Flexible power distribution, precise extraction of cooking vapours only at the open ventilation elements
Can be combined perfectly with other Vario appliances of the 400 series
Precision crafting of 3 mm stainless steel
For surface mounting with a visible edge or for flush mounting
Motorless, can be combined with Gaggenau BLDC remote fan units

Output

Power levels depend on the remote fan unit, see table on page XX.

Features

Manual opening of the ventilation element.
Closing element made of stainless steel, dishwasher-safe.
Metal grease filter, dishwasher-safe.
No connecting piece included.

Consumption data

Consumption data is referred to a configuration with the remote fan unit AR 403 122.
Energy consumption 53.2 kWh/year.
Ventilation efficiency class A.
Illumination efficiency class -.
Grease filter efficiency class C.
Sound level min. 56 dB / max. 68 dB normal mode.

Planning notes

Refer to the table on page XX for the matching remote fan units for air recirculation or air extraction mode.
Secure the control unit to the side panel of the cabinet, not to the base of the cabinet or the kitchen floor.
For each VL one remote fan unit is recommended.
Maximum cooktop width between two VL: 60 cm.
Appliance can be snapped into the worktop from above. Additional fixing by clamps accessible from bottom up, clamping range 30-50 mm.
If combining several Vario appliances of the 400 series, a connection strip VA 420 must be placed between the appliances. Depending on the type of installation, the corresponding connection strip must be provided.
The bearing capacity and stability, in the case of thin worktops in particular, must be supported using suitable substructures. Take into account the appliance weight and additional loads.
Additional instructions for flush mounting:
Installation is possible in worktops made of stone, synthetics or solid wood. Heat resistance and watertight sealing of the cut edges must be observed. Concerning other materials please consult the worktop manufacturer.
The groove must be continuous and even, so that uniform placing of the appliance on the gasket is ensured. Do not use discontinuous lining.
The joint width may vary due to size tolerances of the combinations and of the worktop cut-out.

Characteristics

Product name/family
Color chimney
Typology
Approval certificates
Australia Standards, CE, Eurasian, G-Mark, Ukraine, VDE
Length electrical supply cord (cm)
Required niche size for installation (HxWxD)
170mm x 90.0mm x 492mm
Height of the chimney (mm)
Height of product, without chimney (mm)
Net weight (kg)
2.165
Type of control
Electronic
Number of speed settings
Maximum output air extraction (m3/h)
540
Boost position output recirculating (m3/h)
Maximum output recirculating air (m3/h)
470
Boost position air extraction (m³/h)
Number of lights
Noise level (dB)
68
Diameter of air outlet (mm)
150
Grease filter material
Washable stainless steel
Odour filter
No
Operating Mode
Convertible
Delay Shut off modes
Required accessories
Optional accessories
AA414010
Type of lamps used
Total power of the lamps (W)
Grease filter type
Kassette
Clean filter reminders
Connection Rating (W)
Current (A)
Voltage (V)
220-240
Frequency (Hz)
60; 50
Plug type
Installation typology
Built-in
Universal Product Code
825225921349
Material body
Stainless steel
Approval certificates
Australia Standards, CE, Eurasian, G-Mark, Ukraine, VDE
Length of electrical supply cord (in)
Plug type
Dimensions of the product, with chimney (if exists) (in)
/ x 4 5/16 x
Dimensions of the packed product (in)
6.88 x 15.55 x 23.62
Height of the chimney (in)
Vertical rise height
Required distance above cooktop/ ranges
Net weight (lbs)
5.000
Gross weight (lbs)
15.000
Motor location
without motor
Maximum output recirculating air (CFM)
Diameter of air duct (in) top
Diameter of air duct (in) back
Discharge direction
downward
No-return airflow flap
No
Length electrical supply cord (cm)
Dimensions of the product, with chimney (if exists) (mm)
x 110.0 x 520.0

If installing several appliances in individual cut-outs allow for a division bar of minimum 50 mm between the individual cut-outs.
If operated next to gas appliances, the ventilation moulding AA 414 010 is recommended to ensure maximum performance of the cooktop.
If installed next to gas appliances, flat ducts must not be used for the piping up to the fan unit.
If installed next to VP 414, the flat duct must not be positioned underneath the VP 414.

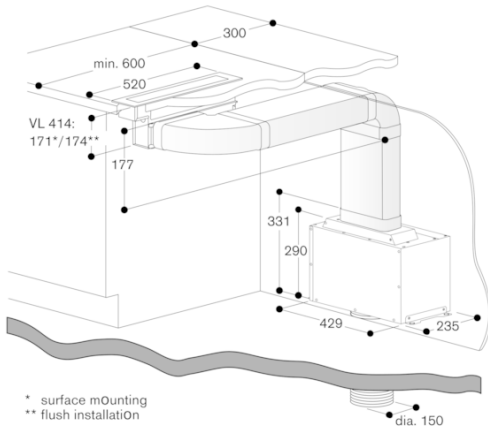
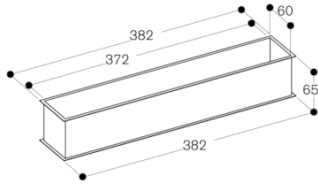
Connection

Connection cable 2.0 m between ventilation element VL 414 and control knob AA 490.

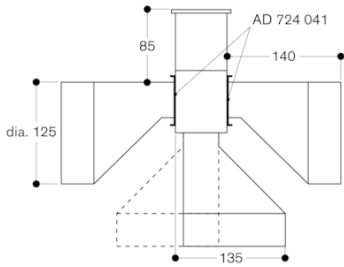
GAGGENAU

VL414111
 Vario downdraft ventilation 400 series
 stainless steel
 Width 11 cm
 Air extraction / Air recirculation
 Without motor and control knob
 2021-05-31
 Page 2

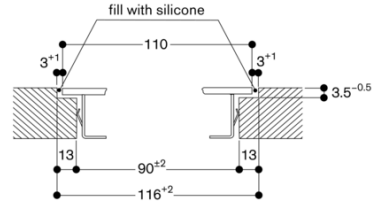
AS 070 001



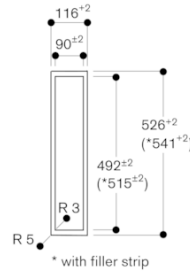
VL 414 with AD 724 040/041



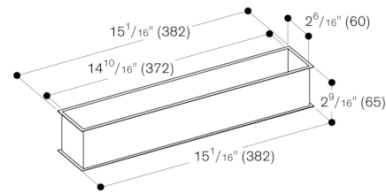
Longitudinal section



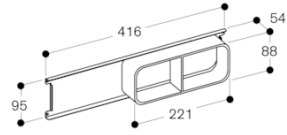
View from above



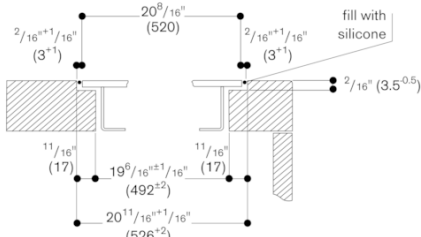
AS 070 000



VL414111
 Vario downdraft ventilation 400 series
 stainless steel
 Width 11 cm
 Air extraction / Air recirculation
 Without motor and control knob
 2021-05-31
 Page 3

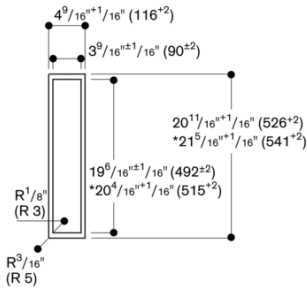


Cross-section



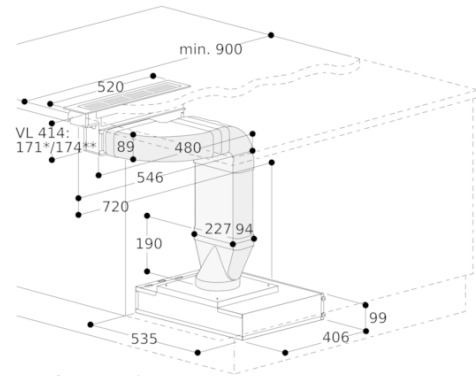
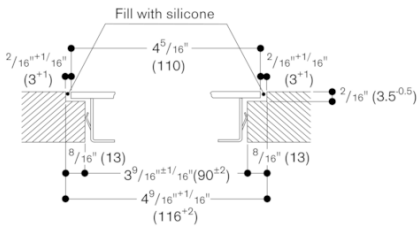
When installing with appliance cover or spacer batten, pay attention to the deeper cut-out and the front and rear groove width.

View from above



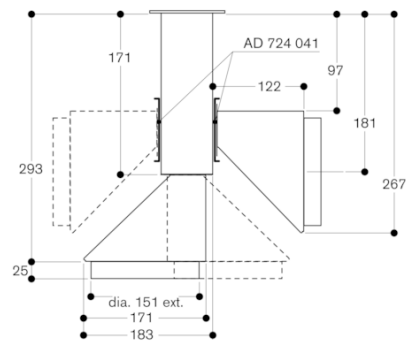
* With spacer batten

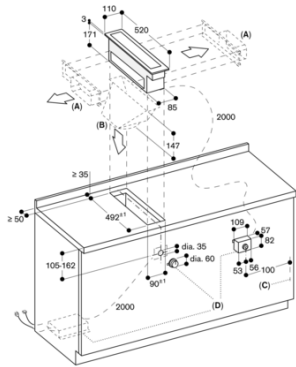
Longitudinal section



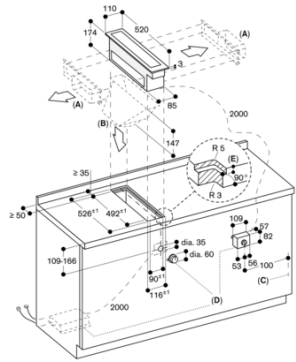
* surface mounting
 ** flush mounting

VL 414 with AD 724 042/041



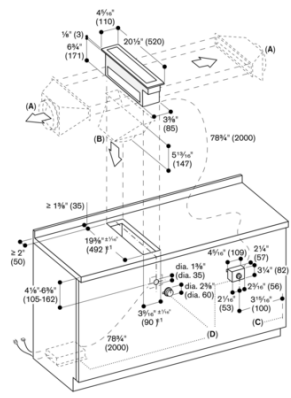
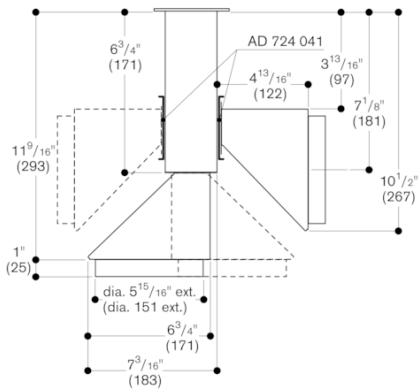


A: DN 150 flat duct pipe connection piece, left/right with AD 854 046 or DN 150 round duct pipe connection piece, left/right with AD 724 042 + AD 724 041
 B: DN 150 round duct pipe connection piece, bottom with AD 724 042
 C: Cable access, right-hand side
 D: Vario ventilation control knob AA 490
 See separate planning notes for
 - Positioning the control knob
 - Configuring the flexible power distribution
 measurements in mm

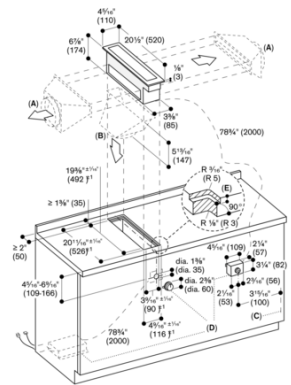


A: DN 150 flat duct pipe connection piece, left/right with AD 854 046 or DN 150 round duct pipe connection piece, left/right with AD 724 042 + AD 724 041
 B: DN 150 round duct pipe connection piece, bottom with AD 724 042
 C: Cable access, right-hand side
 D: Vario ventilation control knob AA 490
 E: 3.5"⁹¹
 See separate planning notes for
 - Positioning the control knob
 - Configuring the flexible power distribution
 measurements in mm

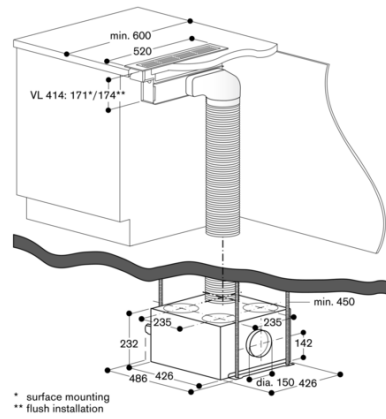
VL 414 with AD 724 042/041



A: DN 5 1/2" (150) round duct pipe connection piece, left/right with AD 724 042 + AD724 041
 B: DN 5 1/2" (150) round duct pipe connection piece, bottom with AD 724 042
 C: Cable access, right-hand side
 D: Vario ventilation control knob AA 490
 See separate planning notes for
 - Positioning the control knob
 - Configuring the flexible power distribution
 measurements in inches (mm)

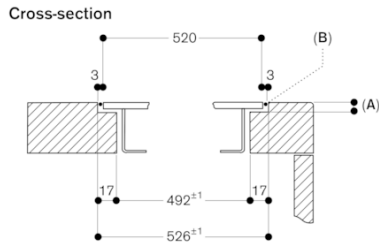


A: DN 5 1/2" (150) round duct pipe connection piece, left/right with AD 724 042 + AD724 041
 B: DN 5 1/2" (150) round duct pipe connection piece, bottom with AD 724 042
 C: Cable access, right-hand side
 D: Vario ventilation control knob AA 490
 E: 1 1/2" (38.1)⁹¹
 See separate planning notes for
 - Positioning the control knob
 - Configuring the flexible power distribution
 measurements in inches (mm)

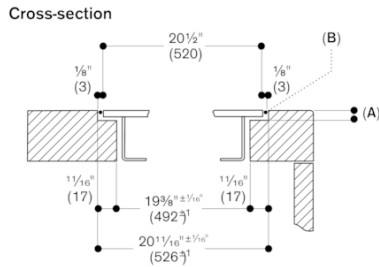


* surface mounting
 ** flush installation

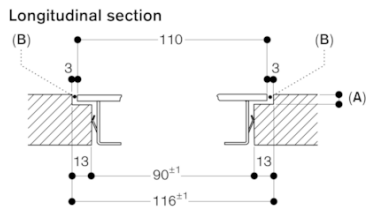
VL414111
 Vario downdraft ventilation 400 series
 stainless steel
 Width 11 cm
 Air extraction / Air recirculation
 Without motor and control knob
 2021-05-31
 Page 5



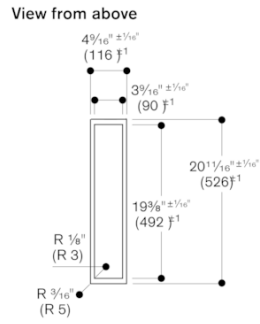
A: 3.5^{±0.5}
 B: Fill with silicone
 measurements in mm



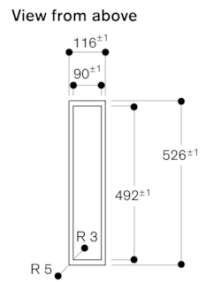
A: 1/8" (3.5^{±0.5})
 B: Fill with silicone
 measurements in inches (mm)



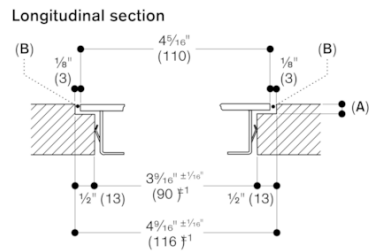
A: 3.5^{±0.5}
 B: Fill with silicone
 measurements in mm



measurements in inches (mm)



measurements in mm



A: 1/8" (3.5^{±0.5})
 B: Fill with silicone
 measurements in inches (mm)

VL414111
 Vario downdraft ventilation 400 series
 stainless steel
 Width 11 cm
 Air extraction / Air recirculation
 Without motor and control knob
 2021-05-31
 Page 6

