



**Color Variants**

**BO450111**  
**Stainless steel-backed full glass door**  
**Width 60 cm**

**Included accessories**

1 x enamel baking tray.  
suit. pyrolytic clean.  
1 x glass pan.  
1 x grill shelf.  
1 x pluggable meat probe.

**Optional accessories**

**BA016105**  
**Pull-out system**  
**BA056115**  
**Heating element for baking stone and**  
**Gastronorm roaster.**  
**BA056133**  
**Baking stone.**  
**GN340230**  
**Gastronorm roaster in cast aluminium.**

**Product Variants**

**BO451111**  
**Oven 400 series**  
**Stainless steel-backed full glass door**  
**Width 60 cm**  
**Controls at the top**

**BO450111**  
**Oven 400 series**  
**Stainless steel-backed full glass door**  
**Width 60 cm**  
**Controls at the top**

Handleless door / automatic door opening  
Pyrolytic system  
13 heating methods, with core temperature probe and baking stone function  
TFT touch display  
Panel-free appliance with surface control module  
Electronic temperature control from 30 °C to 300 °C  
Net volume 76 litres

**Heating methods**

Hot air. Eco hot air. Top + bottom heat. Top heat. Bottom heat. Hot air + bottom heat. Full surface grill + circulated air. Full surface grill. Compact grill. Baking stone function. Roaster function. Dough proofing. Defrosting.

**Handling**

Automatic door opening.  
Rotary knob and TFT touch display operation.  
Option to save individual recipes (incl. core temperature probe).  
Information key with use indicators.  
Side-opening door opens up to 180° angle.

**Features**

Core temperature probe with automatic shut-off.  
Baking stone socket.  
Actual temperature display.  
Rapid heating.  
Timer functions: cooking time, cooking time end, timer, stopwatch, long-term timer.  
60 W halogen light on the top.  
10 W halogen light on the side.  
Enamelled side shelf supports with 4 tray levels, pyrolysis-safe.

**Safety**

Thermally insulated door with quadruple glazing.  
Child lock.  
Safety shut-off.  
Cooled housing with temperature protection.

**Cleaning**

Pyrolytic system.  
Gaggenau enamel.  
Heated catalyser to clean the oven air.

**Planning notes**

Door hinge not reversible.  
The door panel surface of the appliance extends 47 mm from the furniture cavity.  
If the handle (optional accessory) is retrofitted, the outer edge of the door handle extends 94 mm from the furniture cavity.  
Consider the overhang when planning to open drawers next to the appliance.  
When planning a corner solution, pay attention to the 90° door opening angle.  
To achieve the 550 mm installation depth, the connection cable needs to follow the slanted edge on the lower right hand corner of the housing.  
The mains socket needs to be planned outside of the built-in niche.

**Connection**

Total connected load 3.7 KW.  
Plan a connection cable.

**Characteristics**  
**Color / Material Front**  
Stainless steel  
**Built-in / Free-standing**  
Built-in

**Integrated Cleaning system**  
Hydrolytic, Pyrolytic

**Required niche size for installation (HxWxD)**  
590-590 x 560-560 x 550

**Dimensions**  
595 x 590 x 547

**Dimensions of the packed product (HxWxD) (mm)**  
780 x 760 x 680

**Control Panel Material**

**Door Material**  
Stainless steel behind glass

**Net weight (kg)**  
55.971

**Usable volume of cavity (l)**  
76

**Cooking method**  
Baking stone function, Bottom heat, Conventional heat, Defrost, Dough proving setting, Full width grill, Half width grill, Hot Air, Hot Air-Eco, Hot air grilling, Roaster function, Top heat

**First cavity material**

**Temperature control**  
electronic

**Number of interior lights**  
2

**Approval certificates**  
Australia Standards, CCC, CE, China, China ROHS 20, Eurasian, G-Mark, Ukraine, VDE

**Length electrical supply cord (cm)**  
**EAN code**  
4242006242312

**Consumption and connection features**  
**Number of cavities (2010/30/EC)**  
1

**Energy efficiency rating**  
A

**Energy consumption per cycle conventional (2010/30/EC)**  
1.25

**Energy consumption gas oven per cycle conventional (2010/30/EC)**

**Energy consumption per cycle forced air convection (2010/30/EC)**  
0.83

**Energy consumption gas oven per cycle forced air convection (2010/30/EC)**

**Energy efficiency index (2010/30/EC)**  
95.4

**Connection Rating (W)**  
3700

**Current (A)**  
16

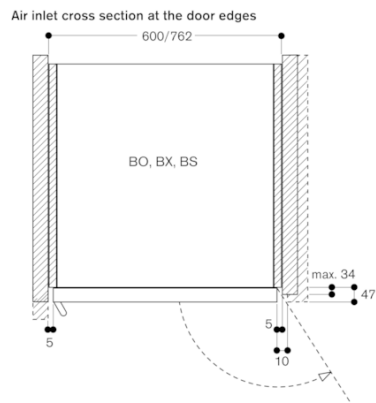
**Voltage (V)**  
220-240

**Frequency (Hz)**  
50

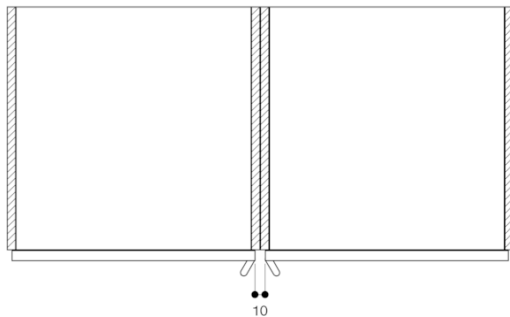
**Plug type**  
fixed connection, no plug

**2020-11-25**

**Page 1**



When installed next to each other



Cross section of the top/bottom door edge gaps

