



Color Variants

BS475112

Included accessories

1 x outlet hose 3m.
1 x grid.
1 x pluggable meat probe.
1 x water inlet hose 3m.
1 x STS tray.
punched.
40 mm deep.

Optional accessories

BA010301
CLS10040

Handleless door / automatic door opening
Cleaning system, fully automatic
Hot air 30 °C to 230 °C can be combined with chosen humidity level of 0%, 30%, 60%, 80% or 100%
Sous-vide cooking with accurate temperature regulation
Full surface grill behind glass ceramic, combinable with circulated air up to 230 °C and steam
Automatic programs
Fixed inlet and outlet water connection
TFT touch display
Panel-free appliance with surface control module
Electronic temperature control from 30 °C to 230 °C
Net volume 50 litres

Heating methods

Hot air + 100 % humidity.
Hot air + 80 % humidity.
Hot air + 60 % humidity.
Hot air + 30 % humidity.
Hot air + 0 % humidity.
Low temperature cooking.
Sous-vide cooking.
Full surface grill level 1 + humidity.
Full surface grill level 2 + humidity.
Full surface grill + circulated air.
Dough proofing.
Defrosting.
Regenerating.

Handling

Automatic door opening.
Rotary knob and TFT touch display operation.
Clear text display.
Option to save individual recipes (incl. core temperature probe).
Personalisation of automatic programs.
Information key with use indicators.
Side-opening door opens up to 180° angle.

Features

Full surface grill 2 kW behind glass ceramic.
Steam removal.
Misting.
Three-point core temperature probe with automatic shut-off and estimation of cooking time.
Hot air fan rotates in both directions for ideal heat distribution
Automatic programs.
Actual temperature display.
Automatic boiling point detection.
External steam generation
Steaming without pressure
Capacity display for filter cartridge (if connected to GF 111 100 descaling system).
2 x LED lights on the side.
Large cavity
Hygienic stainless steel cooking interior.
3 tray levels.
Timer functions: cooking time, cooking time end, timer, stopwatch, long-term timer (certified by Star-K).

Safety

Child lock.
Safety shut-off.
Cooled housing with temperature protection.

Cleaning

Characteristics

Color / Material Front

Built-in / Free-standing

Built-in

Door opening

Lateral

Cleaning

No

Control Panel Material

without panel

Door Material

Stainless steel behind glass

Dimensions (HxWxD)

455x590x540

Dimensions of the packed product

(HxWxD)

590x660x700

Required niche size for installation

(HxWxD)

450-450 x 560-560 x 550

Cavity dimensions

246 x 501 x 406

Usable volume of cavity

50

Number of interior lights

2

Net weight

47.6

Gross weight

49.9

EAN code

4242006277680

Connection Rating

3150

Fuse protection

16

Voltage

220-240

Frequency

50

Length electrical supply cord

175

Consumption and connection features

2025-12-18

Page 1

Cleaning program, fully automatic.

Descaling program for the steam generator.

Drying program.

Automatic drying of the cavity at the end of the cooking process.

Strainer filter, removable.

Special accessories (order as spare parts):

part no. 17002490 Descaling tablets

Planning notes

Door hinge not reversible.

No other electrical appliances should be installed above the BS.

At no point may the outlet hose be positioned higher than the bottom edge of the appliance. The outlet hose must also be at least 100 mm lower than the appliance outlet (see drawing "drainage connection").

Inlet hose can be extended once.

The outlet hose must not be longer than a maximum of 5 m.

The water connection for the inlet hose must always be accessible and not located directly behind the appliance.

The connection of the outlet hose to the siphon must not be directly behind the appliance and should be accessible.

The descaling system GF 111 100 (3) must be installed when connecting the appliance if the water hardness exceeds 7° dH.

The door panel surface of the appliance extends 47 mm from the furniture cavity.

Consider the overhang when planning to open drawers next to the appliance.

When planning a corner solution, pay attention to the 90° door opening angle.

The mains socket needs to be planned outside the built-in niche.

Connection

Total connected load 3.1 KW.

Only cold water connection.

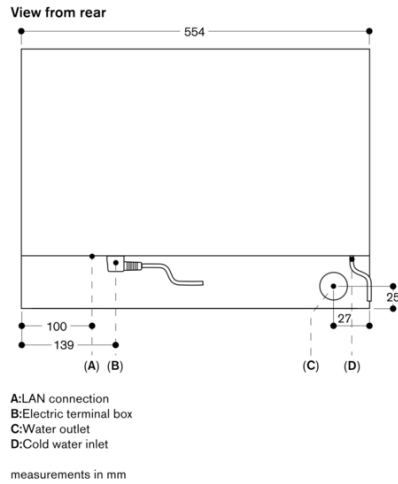
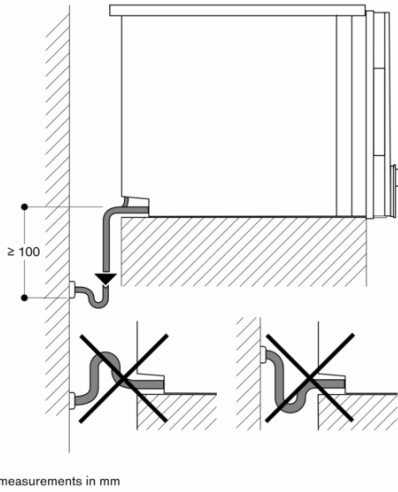
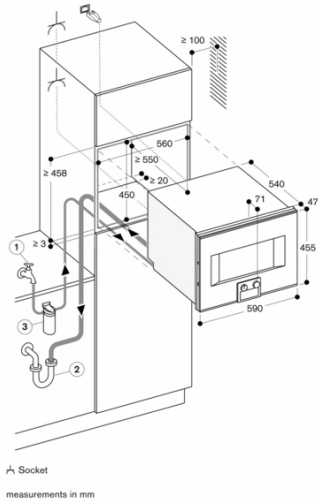
Inlet hose 3.0 m with connection pipe thread ISO228-G 3/4" (Ø 26.4 mm), extendable.

Outlet hose (Ø 25 mm) 3.0 m (HT-Hose).

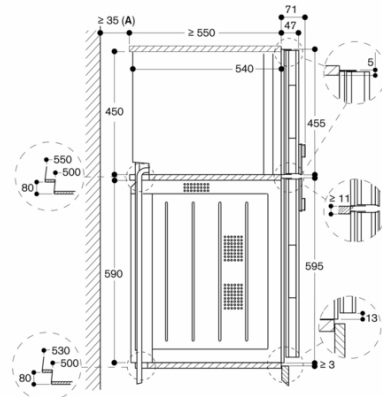
Connecting cable 1.8 m without plug. Plan a LAN cable.

Please check the user manual for how to switch off the WiFi module.

GAGGENAU



Side view of BS 474/475 above BO



A: Only required if the water hoses for the BS steam oven cannot be accommodated in the corner recesses of the appliances.
measurements in mm