



#### Color Variants

AL400191  
stainless steel  
Width 90 cm

#### Optional accessories

AA400510  
Window contact switch

#### Required installation accessories

AD854043

#### Installation Accessories

AA010410  
Air exhaust grille recirculation mode  
AA409401  
Furniture support for table ventilation  
AL 400 90 cm  
AD704048  
Air collector box DN 150 round pipe  
AD704049  
Air collector box DN 150 flat duct

#### AL400191

##### Table ventilation

stainless steel

Width 90 cm

Air extraction/recirculation

Motorless

A

Telescopic table ventilation for combination with all Gaggenau cooktops, completely retractable when not in use

Can be combined perfectly with other Vario appliances of the 400 series  
Dimmable, neutral white surface LED light for ideal illumination of the whole cooktop

Precision crafting of 3 mm stainless steel

For surface installation with a visible edge or for flush installation  
Motorless, can be combined with Gaggenau BLDC remote fan units

#### Output

Power levels depend on the remote fan unit.

#### Features

Three electronically controlled power levels and an intensive mode.

Interval ventilation, 6 min.

Run-on function, 6 min.

Grease filter saturation indicator.

Cartridge-type filter, dishwasher-safe.

Neutral white surface LED light (3600 K), continuously dimmable.

Lamp output 4 x att LED light strips.

Illuminance: 191 lx

Spare covers for closing air outlets.

No duct connection piece included.

#### Product rating

Consumption data is referred to a configuration with the remote fan unit AR 400 142.

Energy efficiency class A at a range of energy efficiency classes from A+++ to D.

Energy consumption 45.5 kWh/year.

Ventilation efficiency class A.

Illumination efficiency class E.

Grease filter efficiency class C.

Sound level min. 45 dB / max. 61 dB normal mode.

#### Planning notes

Secure the control unit to the side panel of the cabinet, not to the base of the cabinet or the kitchen floor.

Connection to the respective appliances via network cable.

For operation with 3 Vario 200 series cooktops, 2 Vario 400 Series cooktops or a cooktop configuration of up to 92 cm wide.

Operation of Vario cooking appliances only possible without appliance cover.

Max. output of cooktops 18 kW.

Installation is possible in worktops made of stone, synthetics or solid wood. Heat resistance and watertight sealing of the cut edges must be observed. Concerning other materials please consult the worktop manufacturer.

The remaining surface of the worktop (min. 50 mm) between the cut-outs must be reinforced with a support. It is recommended to use furniture support AA 409 401/431.

Ovens that do not exceed the maximum allowed cabinet temperature can be combined with the table ventilation if built-in situation permits.

To avoid smoke when frying/grilling refer to the manuals of VR/VP.

#### Characteristics

Product name/family

Color chimney

Typology

Downdraft

Approval certificates

Australia Standards, CE, Eurasian, G-Mark, VDE

Length of electrical supply cord  
170

Required niche size for installation  
(HxWxD)

540mm x 840.0mm x 122mm

Height of the chimney

Height of product, without chimney  
540

Minimum distance above an electric hob

Minimum distance above a gas hob

Net weight

34.389

Type of control

Electronic

Number of speed settings

Maximum output air extraction

600

Boost position output recirculating

Maximum output recirculating air

530

Boost position air extraction

Number of lights (Stck)

4

Noise level

61

Diameter of air outlet

Grease filter material

Washable stainless steel

EAN code

4242006240578

Connection rating

65

Fuse protection

10

Voltage

230

Frequency

60; 50

Plug type

CH plug w/ earthing, Gardy plug w/ earthing, GB plug

Installation type

Built-in

#### Consumption and connection features

created on 2021-10-13

Page 1

When installing a ventilation hood with air extraction mode and a chimney-vented fireplace, the power supply line of the ventilation appliance needs a suitable safety switch.

#### Connection

Total connected load 65 W.

Connecting cable 1.7 m with plug.

Network cable 1,2 m.

# GAGGENAU

AL400191

Table ventilation

stainless steel

Width 90 cm

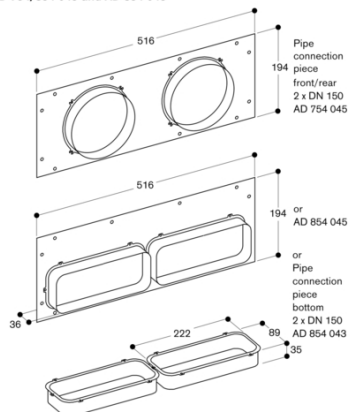
Air extraction/recirculation

Motorless

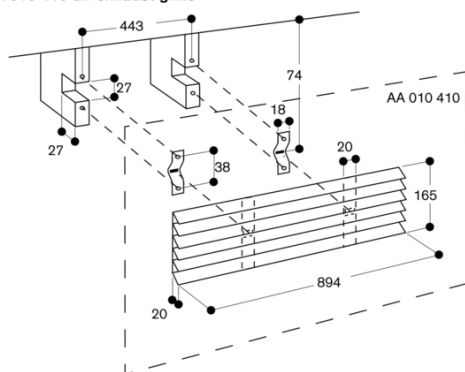
created on 2021-10-13

Page 2

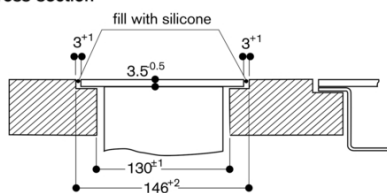
AD 754/854 045 and AD 854 043



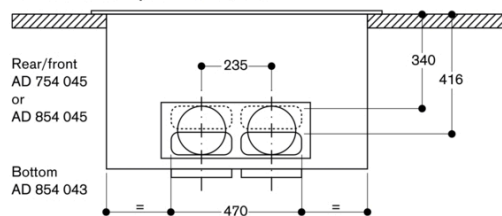
AA 010 410 air exhaust grille



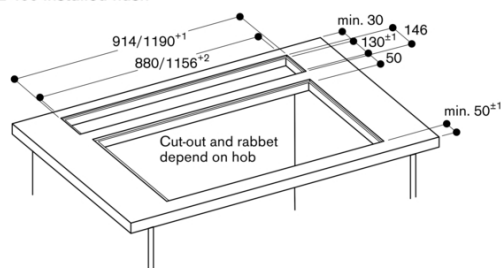
Cross-section



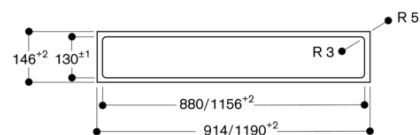
AL 400 connection positions DN 150



AL 400 installed flush



AL 400 cut-out flush-mounted



GAGGENAU

AL400191

Table ventilation

stainless steel

Width 90 cm

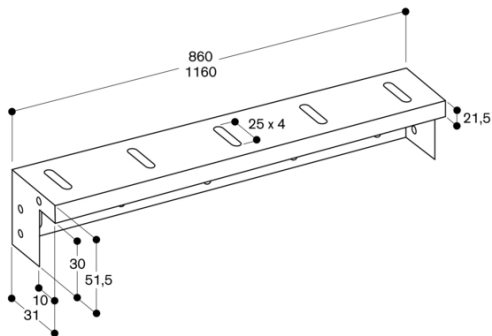
Air extraction/recirculation

Motorless

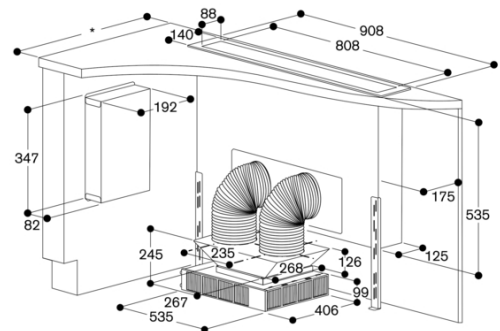
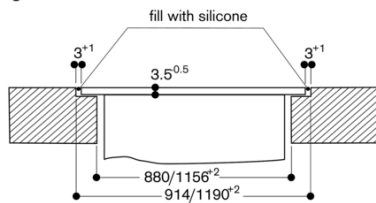
created on 2021-10-13

Page 3

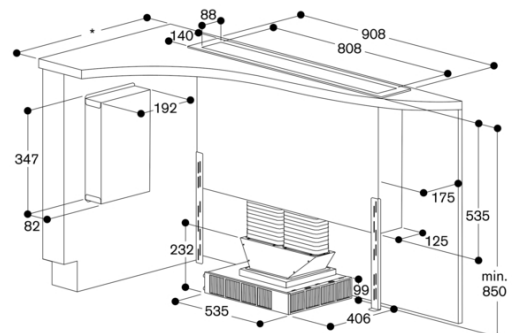
AA 409 401/431 furniture support



Longitudinal section

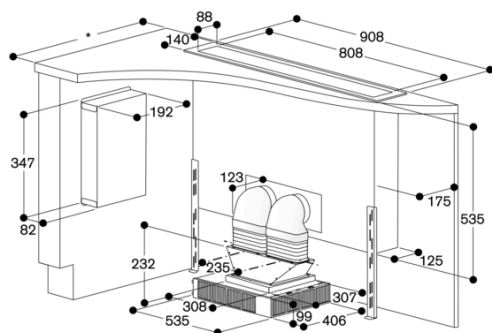
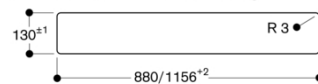


\* All cooktops with cut-out depth 492: min. 750



\* All cooktops with cut-out depth 492: min. 750

AL 400 cut-out for surface mounting



\* All cooktops with cut-out depth 492: min. 750

GAGGENAU

**Table ventilation**  
**stainless steel**

Width 90 cm

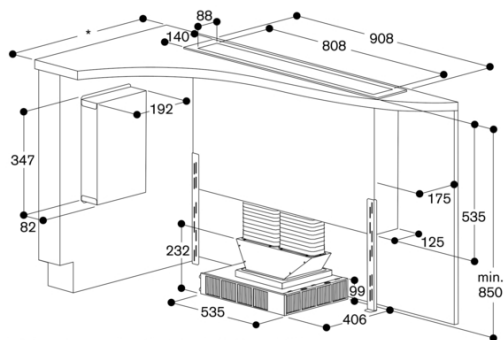
### Air extraction/recirculation

---

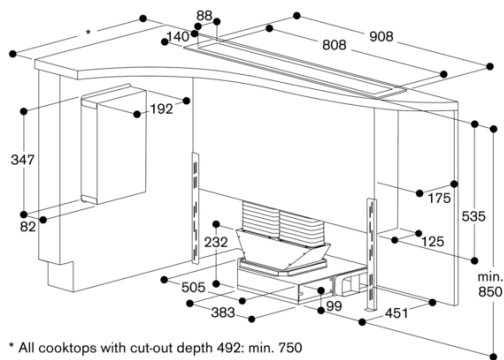
**Motorless**

created on 2021-10-13

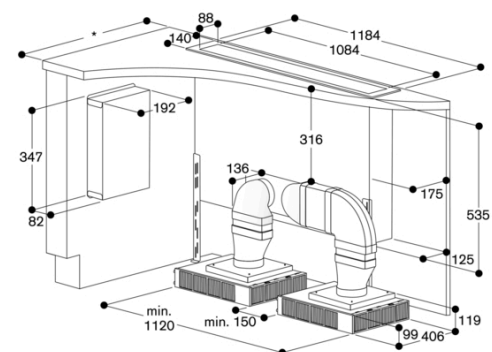
Page 4



\* All cooktops with cut-out depth 492: min. 750

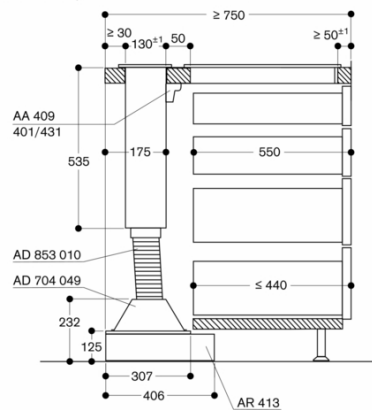


\* All cooktops with cut-out depth 492: min. 750

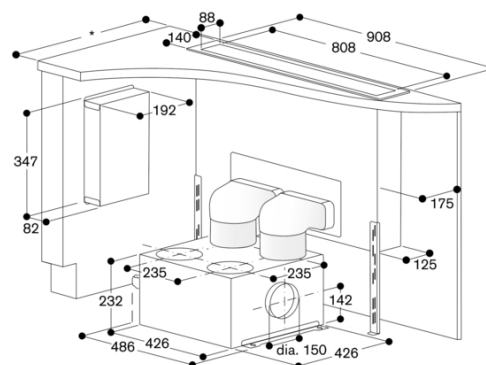


\* All cooktops with cut-out depth 492: min. 750

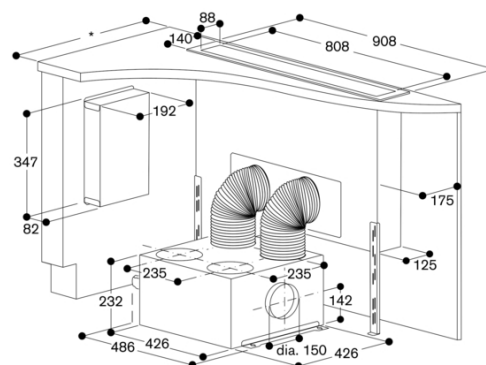
Cross-section of upper cabinet for AL 400 (without back wall) with AR 413; connection at the bottom



measurements in mm



\* All cooktops with cut-out depth 492: min. 750



\* All cooktops with cut-out depth 492: min. 750

Page 5

