



**AL400192**



#### Optional accessories

**AA400510:**

Window contact switch with cable

#### installation accessories

**AA409401:**

Furniture support for AL400 90cm

**AD704050:**

Air collector box flat duct AL 400

**AD754049:**

Adapter for AL round 2x DN150

**AD854050:**

Connection piece for AL 2x flat 150mm

#### Table ventilation 400 series

**90 cm, Stainless steel**

**AL400192**

- When not in use it can be completely lowered into the worktop blends elegantly into worktop
- Perfect Integration with Vario Cooktops 400 series
- Precision crafting of 3 mm stainless steel
- For surface mounting with a visible edge or for flush mounting
- Telescopic table ventilation for combination with all Gaggenau cooktops, completely retractable when not in use

Can be combined perfectly with all Vario cooktops 400 series

Dimmable, neutral white surface LED light for ideal illumination of the whole cooktop

Precision crafting of 3 mm stainless steel

For surface installation with a visible edge or for flush installation

Motorless, can be combined with Gaggenau BLDC remote fan units

#### Output

Power levels depend on the remote fan unit.

#### Features

Three electronically controlled power levels and an intensive mode.

Interval ventilation, 6 min.

Run-on function, 6 min

Grease filter saturation indicator.

2 large-scale metal grease filters included, easy to remove, dishwasher-safe.

Grease drip trays, easy to remove and dishwasher-safe.

Neutral white surface LED light (3600 K), continuously dimmable.

Lamp output 4 x LED light bars 10W.

Illuminance: 400 lx

Flexible connection options to the remote fan unit: at the bottom, at the front or at the back.

In all the options, it is possible to have space for drawers in front of the table ventilation.

#### Product rating

Consumption data is referred to a configuration with the remote fan unit AR 400 142.

Energy efficiency class A at a range of energy efficiency classes from A+++ to D.

Energy consumption 45.5 kWh/year.

Ventilation efficiency class A.

Illumination efficiency class C.

Grease filter efficiency class B.

Sound level min. 45 dB / max. 61 dB normal mode.

#### Planning notes

The equivalent ducting length to ensure good performance is Lmax 19 m.

Combinable with all cooktops Vario 400 series, 400 series and 200 series.

Maximum cooktops width: 90 cm.

Depending on the type of installation, the corresponding accessories must be ordered separately.

For optimum performance in air recirculation we recommend an outflow surface area of at least 400 cm².

Operation of Vario cooking appliances only possible without appliance cover.

Max. output of cooktops 18 kW.

The table ventilation must have its own worktop cut-out.

The bearing capacity and stability, in the case of thin worktops in particular, must be supported using suitable substructures. Take into account the appliance weight and additional loads.

The remaining surface of the worktop (min. 50 mm) between the cut-outs must be reinforced with a support. It is recommended to use furniture support AA 409 401/431.

Additional instructions for flush installation:

Installation is possible in worktops made of stone, synthetics or solid wood. Heat resistance and watertight sealing of the cut edges must be observed. Concerning other materials please consult the worktop manufacturer.

Depending on the type of installation, ovens can be combined with the table ventilation.

When installing a ventilation hood with air extraction mode and a chimney-vented fireplace, the hood's power supply line needs to feature a suitable safety switch.

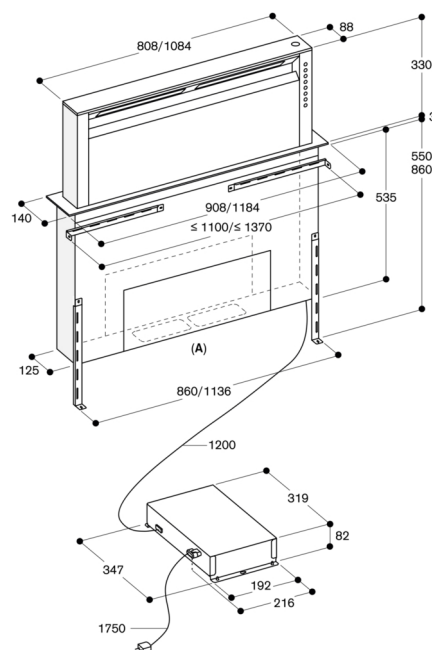
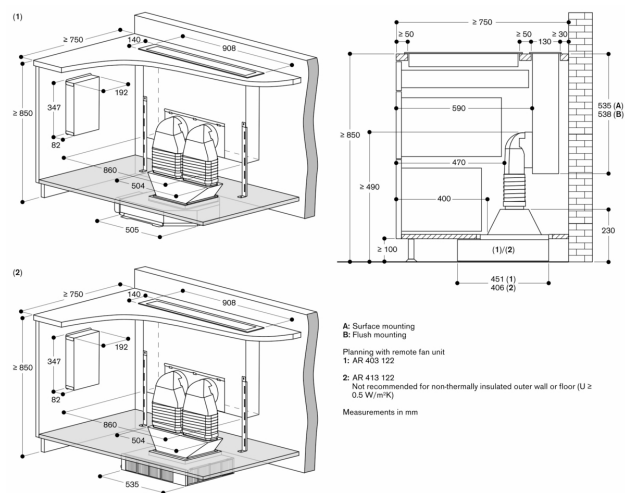
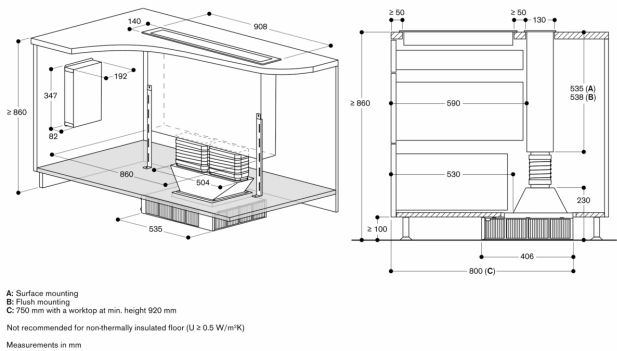
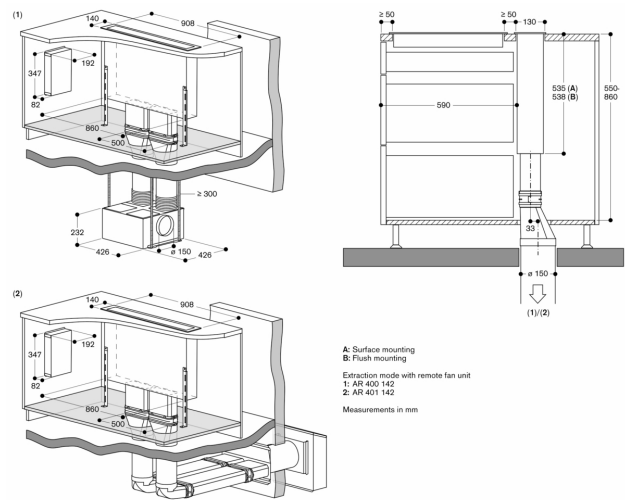
The control unit should be accessible and be secured to a panel of the cabinet that avoids any risk of flooding.

#### Connection

Total connected load 65 W.

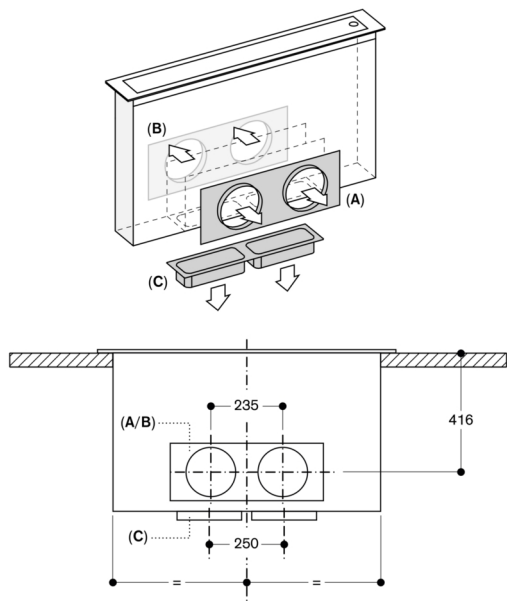
Connecting cable 1.7 m with plug.

Network cable 1,2 m.



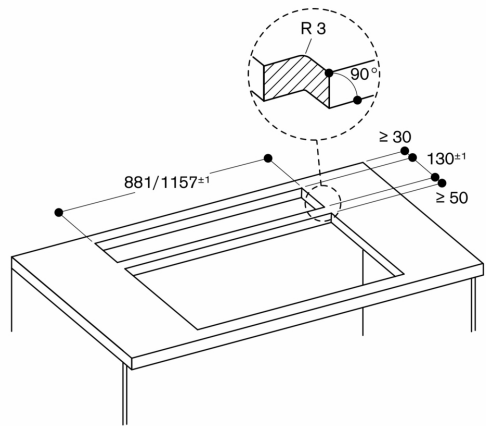
A: Flexible connection of the hood at the front, the back, or at the bottom

Measurements in mm

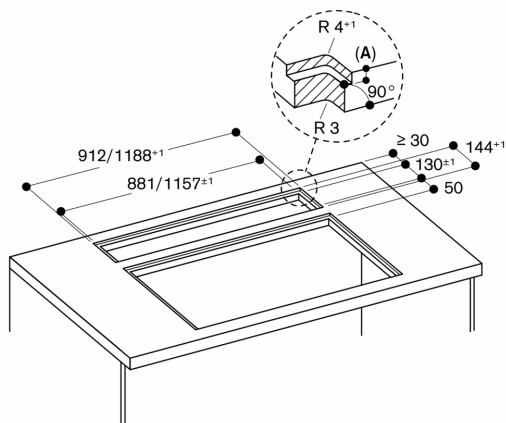


A: Connection at the front with AD 754 049  
B: Connection at the back with AD 754 049  
C: Connection at the bottom with AD 854 050

Measurements in mm



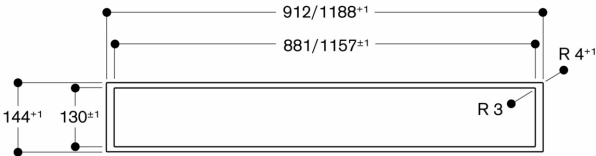
Measurements in mm



A: 3.5<sup>±0.5</sup> mm

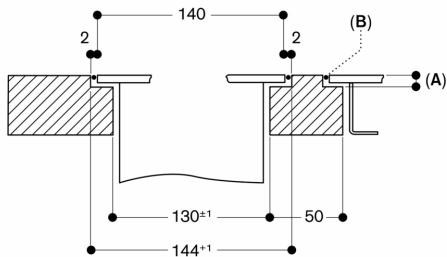
Measurements in mm

View from above



Measurements in mm

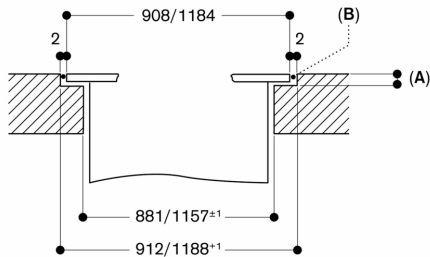
Cross section



A: 3.5<sup>±0.5</sup> mm  
B: Fill with silicone

Measurements in mm

Longitudinal section



A: 3.5<sup>±0.5</sup> mm  
B: Fill with silicone

Measurements in mm

## AA 409 401/431 furniture support

