



BO471111
Oven 400 series
Stainless steel-backed full glass door
Width 60 cm
controls at the top

Handleless door / automatic door opening
Pyrolytic system
17 heating methods, with core temperature probe, rotisserie spit and baking stone function
TFT touch display
Panel-free appliance with surface control module
Electronic temperature control from 30 °C to 300 °C
76 litres net volume

Heating methods

Hot air. Eco hot air. Top + bottom heat. Top + 1/3 bottom heat. Top heat. 1/3 top + bottom heat. Bottom heat. Hot air + bottom heat. Hot air + 1/3 bottom heat. Full surface grill + circulated air. Full surface grill. Compact grill. Baking stone function. Roaster function. Dough proofing. Defrosting. Keeping warm.

Handling

Automatic door opening.
Rotary knob and TFT touch display operation.
Option to save individual recipes (incl. core temperature probe).
Information key with use indications.
Side-opening door opens up to 180° angle.

Features

Core temperature probe with automatic shut-off.
Rotisserie spit.
Baking stone socket.
Actual temperature display.
Rapid heating.
Timer functions: cooking time, cooking time end, timer, stopwatch, long-term timer.
60 W halogen light on the top.
2 x 10 W halogen light on the side.
Enamelled side shelf supports with 4 tray levels, pyrolysis-safe.

Safety

Thermally insulated door with quadruple glazing.
Child lock.
Safety shut-off.
Cooled housing with temperature protection.

Cleaning

Pyrolytic system.
Gaggenau enamel.
Heated air cleaning catalyser.

Planning notes

Door hinge not reversible.
The door panel surface of the appliance extends 47 mm from the furniture cavity.
If the handle (optional accessory) is retrofitted, the outer edge of the door handle extends 94 mm from the furniture cavity.
Consider the overhang, incl. the door handle where applicable, when planning to open drawers next to the appliance.
When planning a corner solution, pay attention to the 90° door opening angle.
To achieve the 550 mm installation depth, the connection cable needs to follow the slanted edge on the lower right hand corner of the housing.
The mains socket needs to be planned outside of the built-in niche.

Characteristics

Color / Material Front

Stainless steel

Construction type

Built-in

Integrated Cleaning system

Pyrolytic

Required niche size for installation (HxWxD)

590-590 x 560-560 x 550

Dimensions of the product (mm)

595 x 590 x 547

Dimensions of the packed product (HxWxD) (mm)

780 x 760 x 680

Control Panel Material

Door Material
Stainless steel behind glass

Net weight (kg)

62.109

Usable volume of cavity (l)

76

Cooking method

Baking stone function, Bottom heat, Conventional heat, Defrost, Dough proving setting, Full width grill, Half width grill, Hot Air, Hot Air-Eco, Hot air grilling, Roaster function, Top heat, warming

First cavity material

Oven control

electronic

Number of interior lights

3

Approval certificates

Australia Standards, CCC, CE, China, China ROHS 20, Eurasian, G-Mark, Ukraine, VDE

Length of electrical supply cord (cm)

EAN code

4242006242275

Consumption and connection features

Number of cavities (2010/30/EC)

1

Energy efficiency class (2010/30/EC)

A

Energy consumption per cycle conventional (2010/30/EC)

1.25

Energy consumption gas oven per cycle conventional (2010/30/EC)

0.83

Energy consumption per cycle forced air convection (2010/30/EC)

0.83

Energy consumption gas oven per cycle forced air convection (2010/30/EC)

0.83

Energy efficiency index (2010/30/EC)

95.4

Connection rating (W)

3700

Current (A)

16

Voltage (V)

220-240

Frequency (Hz)

50

Plug type

fixed connection, no plug

created on 2020-07-31

Page 1

Color Variants

BO471111
Stainless steel-backed full glass door
Width 60 cm
BO471101
Full glass door in Gaggenau Anthracite
Width 60 cm

Included accessories

2 x enamel baking tray.
suit. pyrolytic clean.
1 x rotary spit.
1 x glass pan.
1 x grill shelf.
1 x grill tub with grid.
1 x pluggable meat probe.

Optional accessories

BA026115
Baking tray, enamelled
BA046115
Glass tray
BA056133
Baking stone
BS020002
Pizza paddle, set of 2
GN340230
Gastronorm roaster in cast aluminium

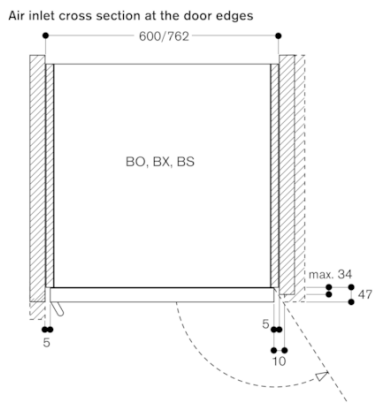
Product Variants

BO470111
Oven 400 series
Stainless steel-backed full glass door
Width 60 cm
controls at the top

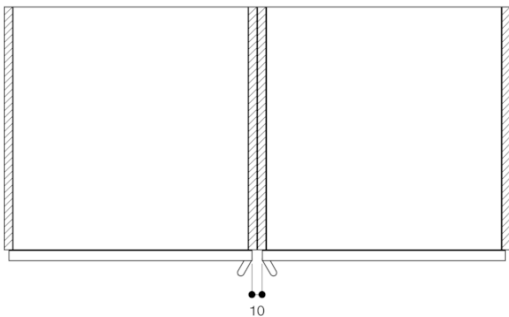
Connection

Total connected load 3.7 KW.
Plan a connection cable.

BO471111
 Oven 400 series
 Stainless steel-backed full glass door
 Width 60 cm
 controls at the top
 created on 2020-07-31
 Page 2



When installed next to each other



Cross section of the top/bottom door edge gaps

