



Color Variants

RY492304
with fresh cooling close to 0 °C
fully integrated

Included accessories

1 x egg box with lid.
1 x ice cube scoop.

Optional accessories

RA430100
RA450000
Mechanical particle filter.

Installation Accessories

RA421912
Stainless steel door panels with handles
RA423340
RA425110
Handle bar, stainless steel, long
RA425910
Handle bar, stainless steel, short
RA428912
RA460000
Accessory for side-by-side installation
RA460013
RA460030
Connecting element for vertically split fronts (for fridge-freezer combination with one door)

RY492304

Vario fridge-freezer combination 400 series
with fresh cooling close to 0 °C
fully integrated
Niche width 91.4 cm, Niche height 213.4 cm
Fridge with two doors and one fully extendable NoFrost freezer drawer



Stainless steel interior with solid anthracite aluminium elements
Warm white and glare-free LED light spots
Opening assist for door with two options:
1. Push-to-open function for integration into handleless furniture front
2. Pull-to-open function to facilitate opening the door using a handle
Flat stainless steel inner doors
Smooth design rail system providing flexible positioning for shelves and door racks
Solid anthracite aluminium door racks
One fresh cooling drawer close to 0 °C with manually adjustable temperature and one fresh cooling drawer with manually adjustable humidity
Integrated ice maker with fixed inlet water connection
1 asymmetrically split glass shelf, height adjustable
Fully extendable freezer drawer with practical divider in anthracite
TFT touch display
Net volume 518 litres

Handling

TFT touch display operation.
Clear text display.

Features

Dynamic cold air distribution.
Automatic defrosting with defrost water evaporation.
Activated charcoal air filter.
Rest mode certified by Star-K.
When rest mode is active, the appliance can only be opened using a handle.
Open-door and malfunction alarm.
Integrated WiFi module for digital services (Home Connect).
The availability of the Home Connect functionality depends on the availability of the Home Connect Services in your country. Home Connect Services are not available in every country – for further information please check: www.home-connect.com

Cooling

No-frost technology with fast cooling.
Temperature adjustable from +2 °C to +8 °C.
3 safety glass shelves, white glass, 2 of which are individually adjustable in height.
1 asymmetrically split safety glass shelf, manually adjustable.
4 brilliant LED light spots with warm white, glare-free light within cooling area and drawers.
Smooth design door rail system with fully flexible positioning of door racks.
6 height-adjustable door racks, 2 of which are extra deep.
Net volume 344 litres.

Fresh cooling close to 0 °C

1 fully extendable fresh cooling drawer close to 0 °C with transparent front, illuminated.
Temperature can be adjusted manually.
Ideal for meat, fish and poultry.
Net volume 34 litres.

Fresh cooling

1 fully extendable fresh cooling drawer with transparent front, illuminated.

Characteristics

Energy Efficiency Class
F
Average annual energy consumption in kilowatt hour per year (kWh/a)
415
Sum of volume of frozen compartments
166
Sum of volume of chill compartments
386
Airborne acoustical noise emissions
42
Airborne acoustical noise emission class
Construction type
Built-in
Door panel options
Not possible
Height
2125
Width of the product
908
Depth of the product
608
Required niche size for installation (HxWxD)
2134.0 x 914.0 x 610
Net weight
217.390
Connection rating
300
Fuse protection
10
Door hinge
Left & Right
Voltage
220-240
Frequency
50-60
Approval certificates
CE, VDE
Length of electrical supply cord
300
Storage Period in Event of Power Failure (h)
17
Number of compressors
2
Number of independent cooling systems
2
Interior ventilator
Yes
Reversible Door Hinge
No
Number of Adjustable Shelves in fridge compartment (Stck)
2
Shelves for Bottles
No
Capacity of Water Tank
EAN code
4242006262259
Brand
Gaggenau
Product name / Commercial code
RY492304
Frost free system
Installation type
N/A

Consumption and connection features

created on 2021-12-09
Page 1

Humidity can be adjusted manually.
Ideal for fruit and vegetables.

Freezing

No-frost technology with fast freezing at -30 °C.
Temperature adjustable from -14 °C to -24 °C.
4-star freezer compartment.
Freezing capacity 16 kg/24 h.
Storage time after a malfunction 17 h.
2 fully extendable drawers.
Interior lighting with 2 LED light spots, warm white light.
Net volume 140 litres.

Ice maker

Integrated in the freezer compartment, with fixed inlet water connection.
Particle filter for water inlet, integrated in ventilation grille area.
Can be switched off.
Ice cube production approx. 1.6 kg/24 h.
Removable ice storage container with approx. 3 kg capacity.

Product rating

Energy efficiency class A++ at a range of energy efficiency classes from A++ + to D.
Energy consumption 346 kWh/year.
Noise level 42 dB (re 1 pW).

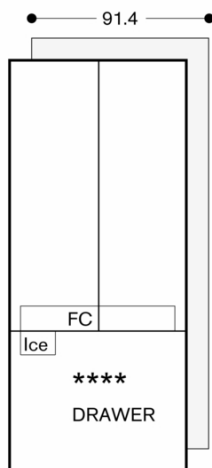
Planning notes

Flat hinge.
Door opening angle of 115°, fixable at 90°.
Max. door panel weight 41kg
Shut-off valve for water connection must be planned next to the appliance and always be accessible.
If the water pressure exceeds 0.8 MPa (8 bar), connect pressure relief valve between water tap and hose set.

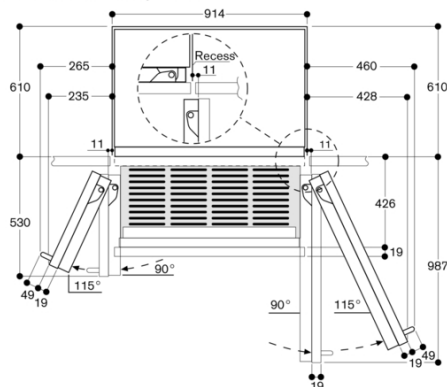
Connection

Total connected load 0.300 KW.
Connecting cable 3.0 m, pluggable.
Water inlet.
Supply hose 2.0 m with 3/4 " connection.
Water pressure 2.4 to 8.3 bar.

RY492304
 Vario fridge-freezer combination 400 series
 with fresh cooling close to 0 °C
 fully integrated
 Niche width 91.4 cm, Niche height 213.4 cm
 Fridge with two doors and one fully extendable NoFrost freezer drawer
 created on 2021-12-09
 Page 2

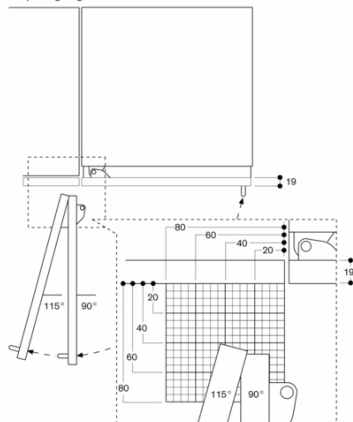


Wall clearance RB 492/RV 492

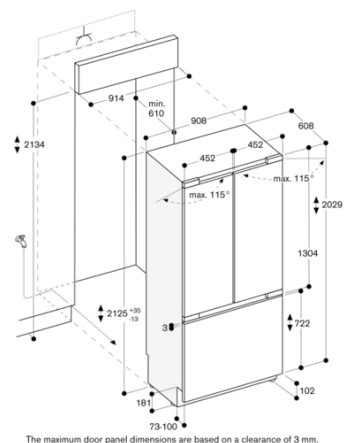


In the drawing, a unit front thickness of 19 mm and a Gaggenau unit handle of 49 mm were taken as a basis.

Door opening angle

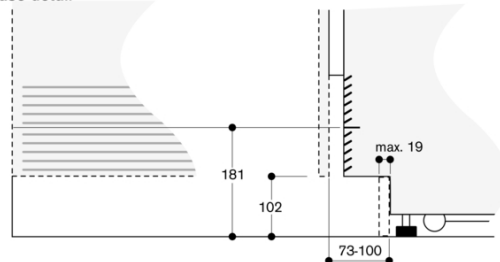


The hinge travel and resulting clearances from adjacent furniture units and handles can be found from the drawing while allowing for the thickness of the front panel. In the drawing, a furniture unit front panel thickness of 19 mm was assumed.



The maximum door panel dimensions are based on a clearance of 3 mm.

Base detail



Based on the standard appliance height, the height of the plinth is 102 mm. Maximum plinth thickness 19 mm.

