



**VL414111**  
**Vario downdraft ventilation 400 series**  
**stainless steel**  
**Width 11 cm**  
**Air extraction/recirculation**  
**Without motor and control knob**



Highly efficient ventilation system close to the cooktop  
 Flexible power distribution, precise extraction of cooking vapours only at the open ventilation elements  
 Can be combined perfectly with other Vario appliances of the 400 series  
 Precision crafting of 3 mm stainless steel  
 For surface installation with a visible edge or for flush installation  
 Motorless, can be combined with Gaggenau BLDC remote fan units

**Output**  
 Power levels depend on the remote fan unit.

**Features**  
 Manual opening of the ventilation element.  
 Closing element made of stainless steel, dishwasher-safe.  
 Metal grease filter, dishwasher-safe.  
 No duct connection piece included.

**Product rating**  
 Consumption data is referred to a configuration with the remote fan unit AR 403 122.  
 Energy consumption 53.2 kWh/year.  
 Ventilation efficiency class A.  
 Grease filter efficiency class C.  
 Sound level min. 56 dB / max. 68 dB normal mode.

**Planning notes**  
 Refer to the table on page XX for the matching remote fan units for air recirculation or air extraction mode.  
 If combining several Vario appliances of the 400 series, a connection strip VA 420 must be placed between the appliances. Depending on the type of installation, the corresponding connection strip must be provided.  
 The bearing capacity and stability, in the case of thin worktops in particular, must be supported using suitable substructures. Take into account the appliance weight and additional loads.  
 Additional instructions for flush installation:  
 Installation is possible in worktops made of stone, synthetics or solid wood. Heat resistance and watertight sealing of the cut edges must be observed. Concerning other materials please consult the worktop manufacturer.  
 The groove must be continuous and even, so that uniform placing of the appliance on the gasket is ensured. Do not use discontinuous lining.  
 The joint width may vary due to size tolerances of the combinations and of the worktop cut-out.  
 If installing several appliances in individual cut-outs allow for a division bar of minimum 50 mm between the individual cut-outs.  
 Maximum cooktop width between two VL: 60 cm.  
 If operated next to gas appliances, the air baffle AA 414 010 is recommended to ensure maximum performance of the cooktop.  
 If installed next to gas appliances, flat ducts must not be used for the piping up to the fan unit.

**Characteristics**  
**Product name/family**  
**Color chimney**  
**Typology**  
**Approval certificates**  
 Australia Standards, CE, Eurasian, G-Mark, Ukraine, VDE  
**Length of electrical supply cord (cm)**  
**Required niche size for installation (HxWxD)**  
 170mm x 90.0mm x 492mm  
**Height of the chimney (mm)**  
**Height of product, without chimney (mm)**  
**Minimum distance above an electric hob**  
**Minimum distance above a gas hob**  
**Net weight (kg)**  
 2.165  
**Type of control**  
 Electronic  
**Number of speed settings**  
**Maximum output air extraction (m3/h)**  
 540  
**Boost position output recirculating (m3/h)**  
**Maximum output recirculating air (m3/h)**  
 470  
**Boost position air extraction (m³/h)**  
**Number of lights (Stck)**  
**Noise level (dB(A) re 1 pW)**  
 68  
**Diameter of air outlet (mm)**  
 150  
**Grease filter material**  
 Washable stainless steel  
**EAN code**  
 4242006258528  
**Connection rating (W)**  
**Current (A)**  
**Voltage (V)**  
 220-240  
**Frequency (Hz)**  
 60; 50  
**Plug type**  
**Installation type**  
 Built-in

**Consumption and connection features**  
 created on 2021-06-22  
 Page 1

If installed next to VP 414, the flat duct must not be positioned underneath the VP 414.

**Connection**  
 Connection cable 2.0 m between ventilation element VL 414 and control knob AA 490.

**Color Variants**

VL414111  
 stainless steel  
 Width 11 cm

**Optional accessories**

AA414010  
 Ventilation moulding for VL 414 next to gas appliance.

**Required installation accessories**

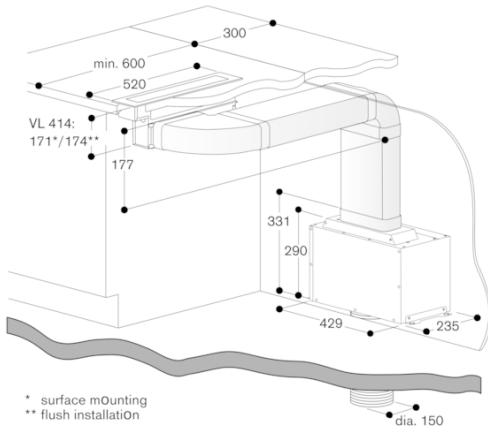
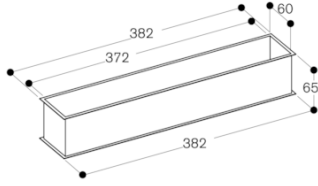
AD724041  
 Round duct connection additional adapter for VL 414 on the side  
 Metal zinc coated  
 AD724042  
 AD854046  
 Flat duct system with conducting fins  
 Connecting piece VL 414 for DN 150 flat

**Installation Accessories**

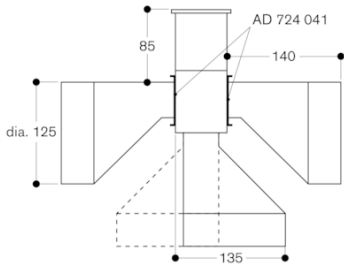
VA420000  
 Connection strip for combination with other Vario appliances of the 400 series for flush installation  
 VA420010  
 Connection strip for combination with other Vario appliances of the 400 series for surface installation

VL414111  
 Vario downdraft ventilation 400 series  
 stainless steel  
 Width 11 cm  
 Air extraction/recirculation  
 Without motor and control knob  
 created on 2021-06-22  
 Page 2

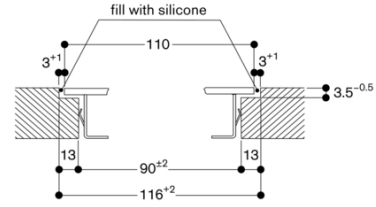
AS 070 001



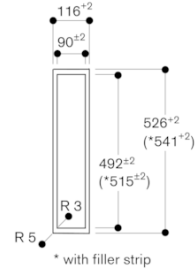
VL 414 with AD 724 040/041



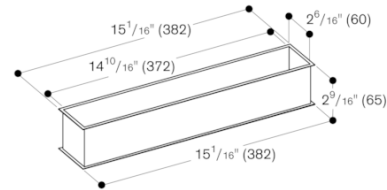
Longitudinal section



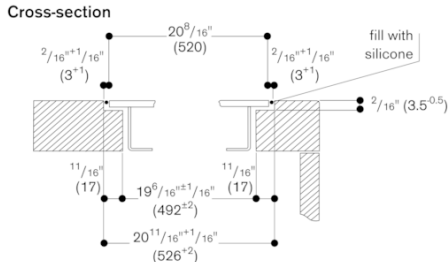
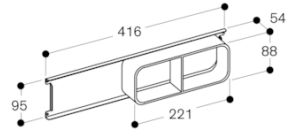
View from above



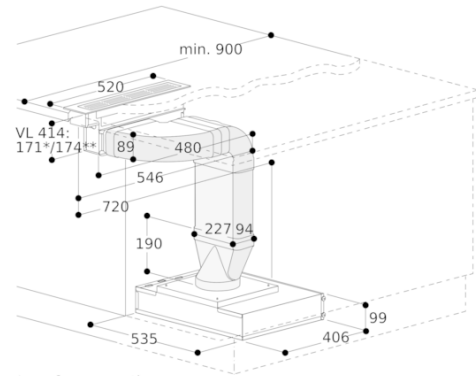
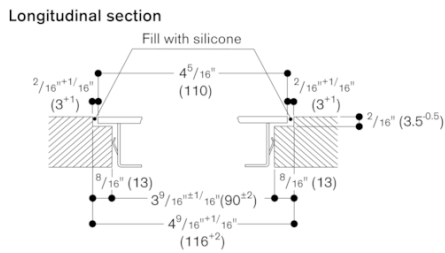
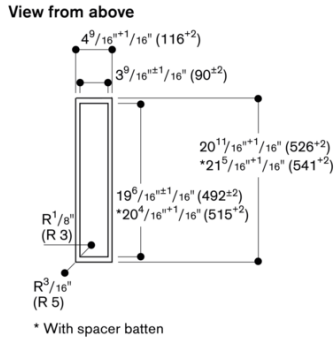
AS 070 000



VL414111  
 Vario downdraft ventilation 400 series  
 stainless steel  
 Width 11 cm  
 Air extraction/recirculation  
 Without motor and control knob  
 created on 2021-06-22  
 Page 3

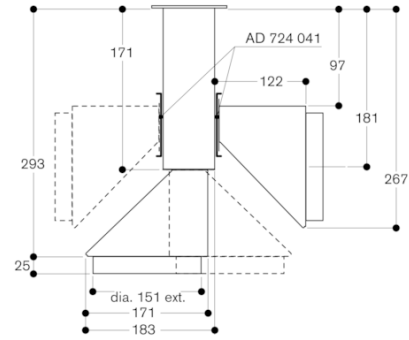


When installing with appliance cover or spacer batten, pay attention to the deeper cut-out and the front and rear groove width.



\* surface mounting  
 \*\* flush mounting

VL 414 with AD 724 042/041





VL414111

Vario downdraft ventilation 400 series  
stainless steel

Width 11 cm

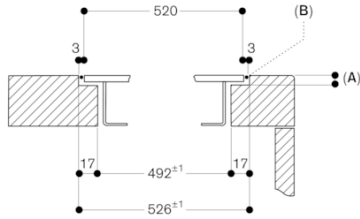
Air extraction/recirculation

Without motor and control knob

created on 2021-06-22

Page 5

Cross-section

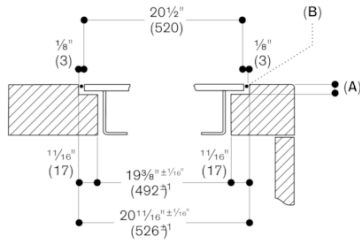


A: 3.5<sup>±0.5</sup>

B: Fill with silicone

measurements in mm

Cross-section

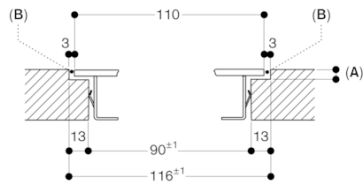


A: 1/6" (3.5<sup>±0.5</sup>)

B: Fill with silicone

measurements in inches (mm)

Longitudinal section

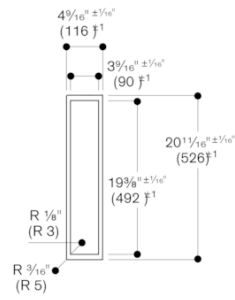


A: 3.5<sup>±0.5</sup>

B: Fill with silicone

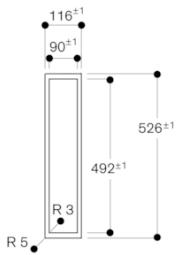
measurements in mm

View from above



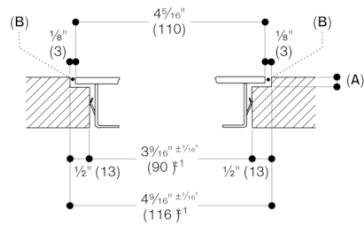
measurements in inches (mm)

View from above



measurements in mm

Longitudinal section



A: 1/6" (3.5<sup>±0.5</sup>)

B: Fill with silicone

measurements in inches (mm)

VL414111  
 Vario downdraft ventilation 400 series  
 stainless steel  
 Width 11 cm  
 Air extraction/recirculation  
 Without motor and control knob  
 created on 2021-06-22  
 Page 6

