



Color Variants

VL414112
stainless steel
Width 15.5 cm

Optional accessories

AA400510
Window contact switch
AA414010
Ventilation moulding for VL 414 next to gas appliance.

Installation Accessories

AD410040
Flexible connecting piece for VL 200 / VL 414
DN 150 flat
AD851041
Connecting piece VL 200 / VL 414 for extension with flat duct DN 150 for extra deep worktop
VA420004
Connection strip for combination with other Vario appliances of the 400 series for flush installation
VA420010
Connection strip for combination with other Vario appliances of the 400 series for surface installation

VL414112
Vario downdraft ventilation 400 series
stainless steel
Width 15.5 cm
Air extraction/recirculation
Motorless



Can be combined perfectly flush with other Vario appliances of the 400 series
Precision crafting of 3 mm stainless steel
Solid stainless steel control knob
Highly efficient, low noise ventilation system especially with remote fan unit AR 410 110
Function for automatic, sensor-controlled power adjustment depending on the build-up of cooking vapours
Low planning and installation effort

Output

Power levels depend on the remote fan unit.

Features

Control knob with illuminated ring included in delivery.
Three electronically controlled power levels and an intensive mode.
Automatic sensor-controlled performance adjustment of the ventilation system.
Automatic sensor-controlled or manual run-on function.
Large-scale metal grease filter with high grease absorption.
Removable, dishwasher-safe grease filter unit.
Grease filter and activated charcoal filter saturation indicator.
Airflow-optimised interior for efficient air circulation.
Interval ventilation, 6 min.
Enamelled ventilation grille, dishwasher-safe.
Air exhaust bend included in delivery.
Overflow 250 ml capacity.
Cooktop-based ventilation control (with suitable cooktop).
Home network integration for digital services (Home Connect) either via cable connection LAN (recommended) or wireless via WiFi.
The availability of the Home Connect functionality depends on the availability of the Home Connect Services in your country. Home Connect Services are not available in every country – for further information please check: www.home-connect.com

Product rating

Consumption data is referred to a configuration with the remote fan unit AR 403 122.
Energy efficiency class A+ at a range of energy efficiency classes from A+++ to D.
Energy consumption 40.4 kWh/year.
Ventilation efficiency class A.
Illumination efficiency class -.
Grease filter efficiency class B.
Sound level min. 57 dB / max. 71 dB normal mode.

Planning notes

For each VL one remote fan unit is recommended.
Maximum cooktop(s) width between two VL : 80 cm except with the CX 482.
Vario cooktops like Vario electric grill and Vario gas wok should be placed between 2 VL.
For optimum performance in air recirculation we recommend an outflow surface area of at least 400 cm².

Characteristics
Product name/family
Color chimney
Typology Downdraft
Length of electrical supply cord 175.0
Min. required niche size for installation (HxWxD)
Height of the chimney
Height of the appliance
Minimum distance above an electric hob
Minimum distance above a gas hob
Net weight 7.5
Type of control Electronic
Number of speed settings
Maximum output air extraction 550
Boost position output recirculating
Maximum output recirculating air
Boost position air extraction
Number of lights (Stck)
Noise level 71
Diameter of air outlet 150
Grease filter material
EAN code 4242006286019
Connection rating 10
Fuse protection
Voltage 220-240
Frequency
Plug type
Installation type Built-in
Included accessories
Delay Shut off modes

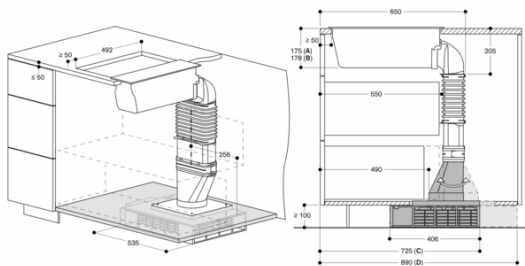
Consumption and connection features

created on 2023-06-23
Page 1

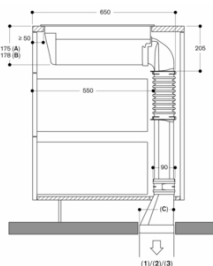
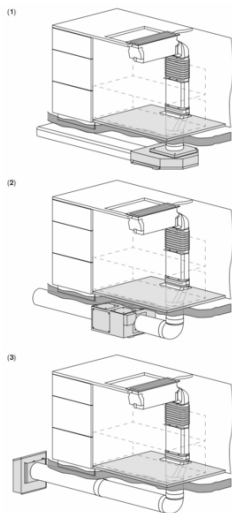
If operated next to gas appliances, the air baffle AA 414 010 is recommended to ensure maximum performance of the cooktop.
Appliance can be snapped into the worktop from above.
Depending on the type of installation (surface-mounted or flush-mounted), the specific location of the cut-out and the knob positions may vary.
If combining several Vario appliances of the 400 series, a connection strip VA 420 must be placed between the appliances. Depending on the type of installation, the corresponding connection strip must be provided.
The bearing capacity and stability, in the case of thin worktops in particular, must be supported using suitable substructures. Take into account the appliance weight and additional loads.
Additional instructions for flush installation:
Installation is possible in worktops made of stone, synthetics or solid wood. Heat resistance and watertight sealing of the cut edges must be observed. Concerning other materials please consult the worktop manufacturer.
The groove must be continuous and even, so that uniform placing of the appliance on the gasket is ensured. Do not use discontinuous lining.
The joint width may vary due to size tolerances of the combinations and of the worktop cut-out.
When installing a ventilation hood with air extraction mode and a chimney-vented fireplace, the hood's power supply line needs to feature a suitable safety switch.
Please read additional planning notes on page xx.

Connection
Total connected load 10 W.
Connecting cable 1.8 m with plug.
Plan a LAN cable.
Power consumption standby/display off 0.2 W.
Please check the user manual for how to switch off the WiFi module.

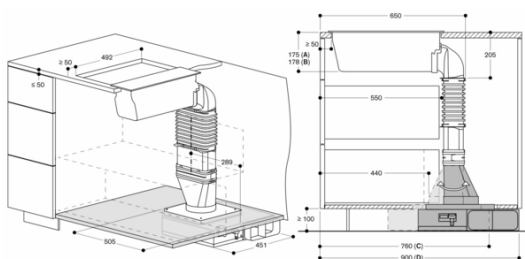
GAGGENAU



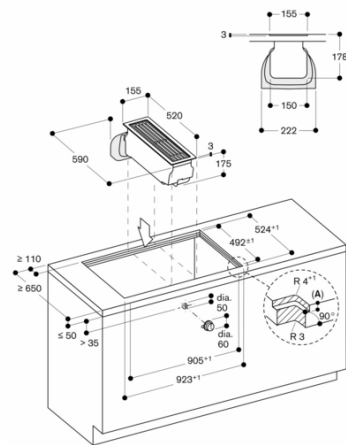
A: Surface mounting
B: Flush mounting (only VL4141)
C: Filter access from the front. Connecting piece flat/round towards the front
D: Filter access from the back. Connecting piece flat/round towards the back
measurements in mm



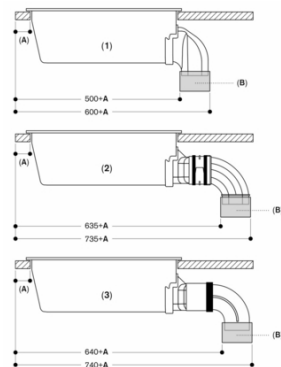
Extraction mode with remote fan unit
A: AD 402
B: AD 400
C: AD 401
A: Surface mounting
B: Flush mounting
C: 15.5
measurements in mm



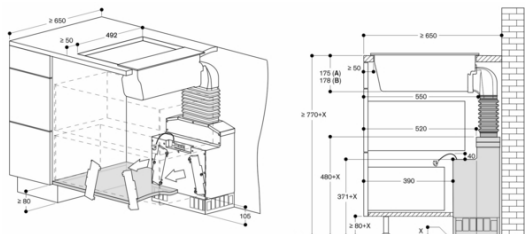
A: Surface mounting
B: Flush mounting (only VL4141)
C: Exhaust to the left. Flat/round connecting piece towards the front
D: Exhaust to the right. Flat/round connecting piece towards the back
measurements in mm



A: 3.5^{±0.5}
6.0^{±0.5} in combinations with frameless induction hobs
measurements in mm



1: Direct installation
2: Installation with extension for extra deep worktop and plastic ducting:
- AD 851 041 (connecting piece for extension)
- AD 857 040 (flat duct connecting piece, plastic)
- AD 857 030 (flat duct bend, 90°, vertical, plastic)
3: Installation with extension for extra deep worktop and metal ducting:
- AD 851 041 (connecting piece for extension)
- AD 854 000 (flat duct connecting piece, metal)
- AD 854 030 (flat duct bend, 90°, vertical, metal)
A: ≥ 50mm
B: Connecting piece
measurements in mm



A: Surface mounting
B: Flush mounting (only VL4141)
measurements in mm

VL414112
 Vario downdraft ventilation 400 series
 stainless steel
 Width 15.5 cm
 Air extraction/recirculation
 Motorless
 created on 2023-06-23
 Page 3

