



Color Variants

BMP225100

Included accessories

1 x glass pan.
1 x grid.

Product Variants

BMP224100

Flush installation
Handleless door / automatic door opening
Single operation and combination of microwave and grill
Sequential operation of up to 5 modes incl. programming of combined operation and rest time
TFT touch display
Electronic temperature control
Interior volume 21 litres

Programs

Microwave operation with 5 output levels: 900, 600, 360, 180, 90 W.
Full surface grill with 3 levels of intensity, maximum output 1300 W.
Full surface grill with microwave output levels 360, 180 and 90 W combinable.
10 automatic programmes with weight indication:
3 defrosting programmes 4 cooking programmes 3 combination programmes
Option to save individual recipes.

Capacity

Automatic door opening.
Rotary knob and TFT touch display operation.
Clear text display.
Information key with use indicators.
Side-opening door opens up to 110° angle.

Features

Innowave.
Actual temperature display.
25 W interior light.
Hygienic stainless steel interior with glass ceramic base.

Safety

Thermally insulated door with double glazing.
Triple door lock.
Child lock.
Safety shut-off.
Cooled housing with temperature protection.

Performance

Door hinge not reversible.
Minimum installation height 85 cm (top edge of niche bottom).
Height-adjustable feet by a total of 120mm
Installation of BMP above BOP with intermediate shelf.
Necessary lateral gap between appliance door and furniture panel of min. 5 mm.
The door panel surface of the appliance extends 21 mm from the furniture cavity.
When planning a corner solution, pay attention to the 90° door opening angle.

Connection

Total connected load 2.0 KW.

Characteristics

Type of micro-wave oven

MW+Grill function

Color / Material Front

Anthracite

Built-in / Free-standing

Built-in

Door opening

Button

Integrated Cleaning system

No

Control Panel Material

Glass

Door colour

Anthracite

Dimensions

382x590x321

Dimensions of the packed product (HxWxD)

470x460x670

Required niche size for installation (HxWxD)

362-362 x 560-560 x 320

Cavity dimensions

220 x 350 x 270

Cavity capacity

21

Maximum micro-wave power

900

Number of interior lights

1

Net weight

18.9

Gross weight

21.6

EAN code

4242006218485

Connection Rating

1990

Fuse protection

10

Voltage

220-240

Frequency

60; 50

Length electrical supply cord

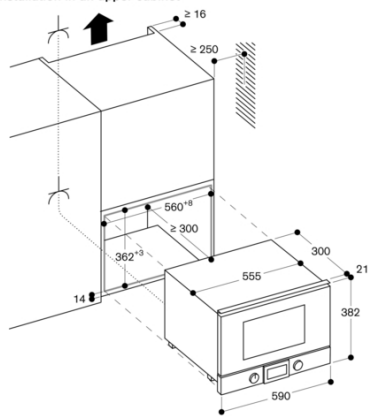
170

Consumption and connection features

2025-12-17

Page 1

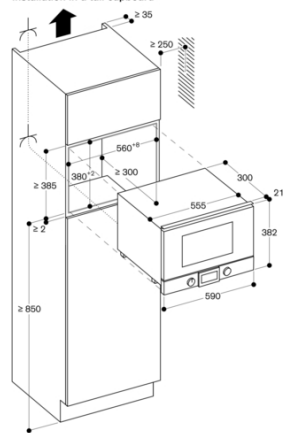
Installation in an upper cabinet



Socket

measurements in mm

Installation in a tall cupboard



Socket

measurements in mm

Side view of BMP 224/225 over BOP

