



BSP250110
Combi-steam oven 200 series
Full glass door in Gaggenau Metallic
Width 60 cm
Controls at the top



Flush installation
Water tank
Hot air 30 °C to 230 °C can be combined with chosen humidity level of 0%, 30%, 60%, 80% or 100%
TFT touch display
Panel-free appliance with surface control module
Steaming without pressure
Electronic temperature control from 30 °C to 230 °C
Core temperature probe, removable
Net volume 42 litres

Heating methods
Hot air + 100 % humidity.
Hot air + 80 % humidity. Hot air + 60 % humidity. Hot air + 30 % humidity.
Hot air + 0 % humidity. Dough proofing.
Defrosting. Regenerating. Low temperature cooking.

Capacity
Rotary knob and TFT touch display operation.
Clear text display.
Option to save individual recipes (incl. core temperature probe).
Information key with use indicators.
Side-opening door opens up to 110° angle.

Features
Removable 1.3 litre water tank.
Water level warning.
Core temperature probe with automatic shut-off.
Actual temperature display.
Timer functions: cooking time, cooking time end, timer, stopwatch, long-term timer.
Electronic boiling point detection.
48 W halogen light on the side.
Hygienic stainless steel cooking interior.
4 tray levels.

Safety
Child lock.
Safety shut-off.
Cooled housing with temperature protection.

Cleaning
Cleaning aid.
Drying program.
Descaling programme.
Grease filter, dishwasher-safe.

Performance
Door hinge not reversible.
No other electrical appliances should be installed above the BS.
The door panel surface of the appliance extends 21 mm from the furniture cavity.
The outer edge of the door handle extends 72 mm from the furniture cavity.
Necessary lateral gap between appliance door and furniture panel of min. 5 mm.
Consider the overhang, incl. the door handle, when planning to open drawers next to the appliance.
When planning a corner solution, pay attention to the 110° door opening angle.
To achieve the 550 mm installation depth, the connection cable needs to follow the slanted edge on the corner of the housing.
The mains socket needs to be planned outside of the built-in niche.

Connection

Characteristics
Color / Material Front
Built-in / Free-standing
Built-in
Door opening
Lateral
Required niche size for installation (HxWxD)
Dimensions
Dimensions of the packed product (HxWxD)
575 x 660 x 690
Control Panel Material
without panel
Door Material
Glass
Net weight
35.9
Approval certificates
Australia Standards, CE, Eurasian, G-Mark, Ukraine, VDE
Length electrical supply cord
150
EAN code
4242006217341
Electrical connection rating
Fuse protection
8
Voltage
220-240
Frequency
50; 60
Plug type
fixed connection, no plug
Approval certificates
Australia Standards, CE, Eurasian, G-Mark, Ukraine, VDE
Number of cavities (2010/30/EC)
1
Usable volume (of cavity) - NEW (2010/30/EC)
42
Energy efficiency rating
A+
Energy consumption per cycle conventional (2010/30/EC)
Energy consumption gas oven per cycle conventional (2010/30/EC)
Energy consumption per cycle forced air convection (2010/30/EC)
0.57
Energy consumption gas oven per cycle forced air convection (2010/30/EC)
Energy efficiency index (2010/30/EC)
78.1

Consumption and connection features

2022-08-19
Page 1

EU 65/2014
Total connected load 1.9 KW.
Connection cable 1.5 m without plug.

Color Variants

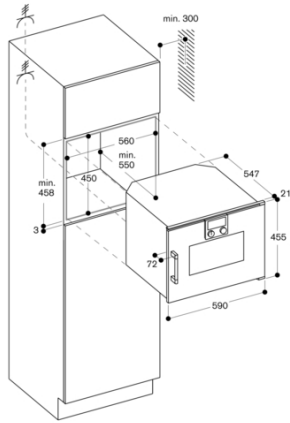
BSP250110
Full glass door in Gaggenau Metallic
Width 60 cm

Included accessories

1 x STS tray-GN2/3-punched-40 mm deep.
1 x STS tray-GN2/3-unpunched-40 mm deep.
1 x grid.
1 x pluggable meat probe.

GAGGENAU

BSP250110
Combi-steam oven 200 series
Full glass door in Gaggenau Metallic
Width 60 cm
Controls at the top
2022-08-19
Page 2



Side view of BSP, BMP over BOP

