



Color Variants

DVP221110

DVP221130

Included accessories

- 50 x Vacuuming bag. small.
- 50 x Vacuuming bag. big.
- 1 x Raised vacuuming platform.
- 1 x Adaptor f. vacuuming outside the chamber.
- 1 x Vacuuming hose.

Integrable in 14 cm high niche
Hygienic stainless steel vacuuming chamber, applicable height up to 80 mm
3 vacuuming levels for vacuuming in the chamber, max. 99%
3 vacuuming levels for vacuuming outside the chamber, max. 90%
Automatic connection recognition for vacuuming outside the chamber
Flush installation
Handleless drawer
Push-to-open system

Application

Vacuuming for sous-vide cooking.
Vacuuming for fast marinating and flavouring.
Vacuuming for extended storage.
Vacuuming of vacuuming containers outside the chamber.
Vacuuming of liquids in bottles outside the chamber.

Capacity

Touch key operation.

Features

Net volume 7 litres.
Capacity load max. 10 kg.
Maximum size of vacuuming bags W 240 mm x L 350 mm.
3 heat-sealing levels for different strengths of bag material.
Sealing bar, non-stick coating, removable.
Safety glass cover, opens automatically after vacuuming.
Raised vacuuming platform, 44 mm, deployable.
Utility space in vacuuming chamber, W 210 mm x L 275 mm.
Membrane for avoiding reflow of liquids during vacuuming outside the chamber.
Drying programme for vacuuming pump.
Warning function.

Performance

Necessary lateral gap between appliance front and furniture panel of min. 5 mm.
The panel surface of the appliance extends 21 mm from the furniture cavity.
Installation of BS/BM/CM directly above DV in 59 cm niche without intermediate floor.
Built-in under worktop or in single niche.
The socket can be planned behind the appliance.

Connection

Total connected load 0.32 KW.

Characteristics

Color / Material Front

Built-in / Free-standing

Built-in

Dimensions

140x590x542

Dimensions of the packed product (HxWxD)

230x655x665

Required niche size for installation (HxWxD)

140 x 560 x 550

Maximum number of plates

Maximum number of espresso cups

Net weight

33.7

Gross weight

35.6

EAN code

4242006260279

Fuse protection

6

Voltage

220-240

Frequency

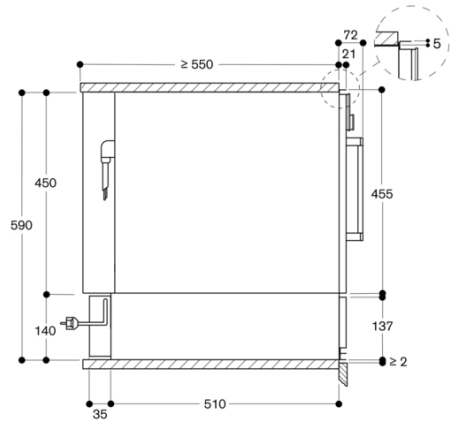
60; 50

Consumption and connection features

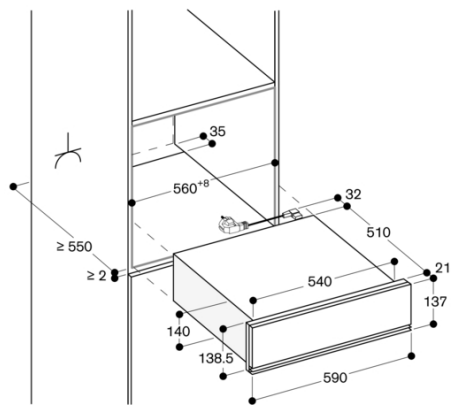
2025-12-15

Page 1

Side view DVP 221 below BSP, BMP, CMP



measurements in mm



Socket

measurements in mm