



Color Variants

RY492504  
With fresh cooling close to 0 °C  
Fully integrated

Included accessories

1 x egg box with lid.  
1 x ice cube scoop.

RY492504  
Vario fridge-freezer combination 400 series  
With fresh cooling close to 0 °C  
Fully integrated  
Niche width 91.4 cm, Niche height 213.4 cm  
Cooling section with two doors and one fully extendable freezing drawer

Stainless steel interior with solid anthracite aluminium elements  
Warm white and glare-free LED light spots  
Opening assist for door with two options:  
1. Push-to-open function for integration into handleless furniture front  
2. Pull-to-open function to facilitate opening the door using a handle  
Flat stainless steel inner doors  
Almost invisible rail system for shelves and door racks for flexible positioning  
Solid anthracite aluminium door racks  
1 fresh cooling drawer close to 0 °C with manually adjustable temperature and one fresh cooling drawer with manually adjustable humidity  
Integrated ice maker with fixed inlet water connection  
1 asymmetrically split glass shelf, height adjustable  
Fully extendable freezer drawer with practical divider in anthracite  
TFT touch display  
Gross volume 633 l litres total

Handling  
TFT touch display operation.  
Clear text display.

Technical Features  
Dynamic cold air distribution.  
Automatic defrosting with defrost water evaporation.  
Activated charcoal air filter.  
Rest mode certified by Star-K.  
When rest mode is active, the appliance can only be opened using a handle.  
Open-door and malfunction alarm.  
Home network integration for digital services (Home Connect) wireless via WiFi.  
The use of the Home Connect functionality depends on the Home Connect services, which are not available in every country. For further information please check: home-connect.com.

Cooling  
No-Frost technology with fast cooling.  
Temperature adjustable from +2 °C to +8 °C.  
3 safety glass shelves, white glass, 2 of which are individually adjustable in height.  
1 asymmetrically split safety glass shelf, with manual height adjustment.  
Flat door rail system with fully flexible positioning of door racks.  
6 height-adjustable door racks, 2 of which are extra deep.  
Net fridge capacity total: 378 l litres.

Fresh cooling close to 0 °C  
1 fully extendable fresh cooling drawer close to 0 °C with transparent front, illuminated.  
Temperature can be adjusted manually.  
Ideal for meat, fish and poultry.  
Net volume 34 litres.

Fresh cooling  
1 fully extendable fresh cooling drawer with transparent front, illuminated.  
Humidity can be adjusted manually.  
Ideal for fruit and vegetables.

Freezing

Characteristics  
Built-in / Free-standing  
Built-in  
Number of compressors  
2  
Number of independent cooling systems  
2  
Width of the product  
908  
Height  
2125  
Depth of the product  
608  
Net weight  
219.581  
Required niche size for installation (HxWxD)  
2134.0 x 914.0 x 610  
Door panel options  
Not possible  
Door hinge  
left and right  
Number of Adjustable Shelves in fridge compartment  
2  
Shelves for Bottles  
No  
Frost free system  
Interior ventilator  
Yes  
Reversible Door Hinge  
No  
Length electrical supply cord  
300  
Noise level  
41  
Multi-Flow Air Tower  
Yes  
Fast cooling switch  
Yes  
Fast freezing switch  
No  
Carbon Air Filter  
No  
Temperature Controlled Drawer  
No  
Humidity Control Drawer  
Yes  
Number of Door Bins - Refrigerator  
6  
Door bin adjustability - Refrigerator  
No  
Tilt-out door bins in fridge  
No  
Number of Gallon storage  
2  
No. of shelves in fridge  
3  
Number of shelves - Freezer  
Shelf Adjustability - Freezer  
No  
Capacity of Water Tank  
Connection Rating  
300  
Fuse protection  
10  
Voltage  
220-240  
Frequency  
50-60  
Energy consumption  
Freezing capacity  
Energy efficiency rating  
Energy consumption annual - NEW (2010/30/EC)  
Refrigerator Net capacity - NEW (2010/30/EC)  
Freezer Net capacity - NEW (2010/30/EC)  
0  
Frost free system  
Freezing capacity) - NEW (2010/30/EC)  
0  
Storage Period in Event of Power Failure (h)  
17  
Approval certificates  
CE, VDE  
Universal Product Code  
Color / Material body  
Door panel options

No-frost technology with fast freezing at -30 °C.  
Temperature adjustable from -14 °C to -24 °C.  
3.5 stars energy rating. Energy consumption 436 kWh kWh/year.  
Freezing capacity 16 kg/24 h.  
Storage time after a malfunction 17 h.  
2 fully extendable drawers.  
Interior lighting with 2 LED light spots, warm white light.

Ice maker  
Integrated in the freezer compartment, with fixed inlet water connection.  
Particle filter for water inlet, integrated in ventilation grille area.  
Can be switched off.  
Ice cube production approx. 1.6 kg/24 h.  
Removable ice storage container with approx. 3 kg capacity.

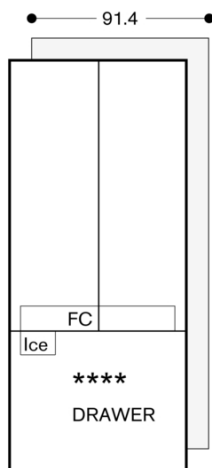
Consumption data  
3.5 stars.  
Energy consumption 436 kWh/year.  
Noise level 41 dB (re 1 pW).

Planning notes  
Flat hinge.  
Door opening angle of 115°, fixable at 90°.  
Max. door panel weight:  
Each door 67 kg.  
Drawer 10 kg.  
Shut-off valve for water connection must be planned next to the appliance and always be accessible.  
If the water pressure exceeds 0.8 MPa (8 bar), connect pressure relief valve between water tap and hose set.

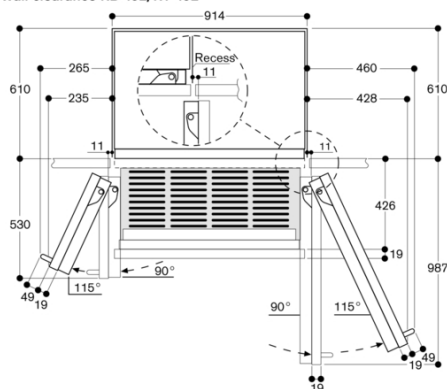
Connection  
Total connected load 0.300 KW.  
Connecting cable 3.0 m, detachable.  
Water inlet.  
Supply hose 2.9 m with 3/4 " connection.  
Water pressure 2 to 8 bar.

RY492504  
 Vario fridge-freezer combination 400 series  
 With fresh cooling close to 0 °C  
 Fully integrated  
 Niche width 91.4 cm, Niche height 213.4 cm  
 Cooling section with two doors and one fully extendable freezing drawer

2021-12-20  
 Page 2

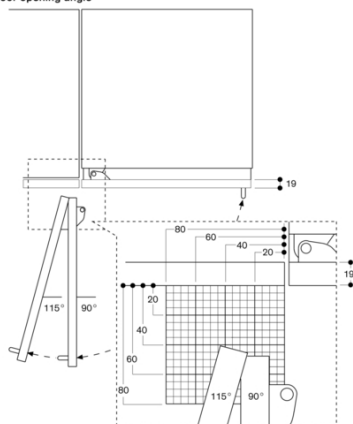


Wall clearance RB 492/RV 492

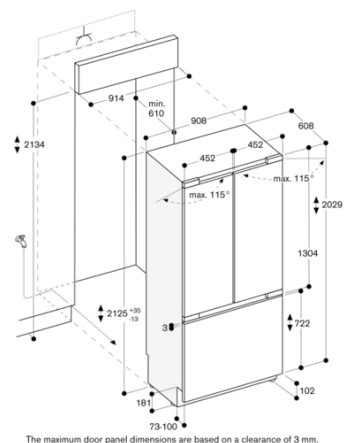


In the drawing, a unit front thickness of 19 mm and a Gaggenau unit handle of 49 mm were taken as a basis.

Door opening angle

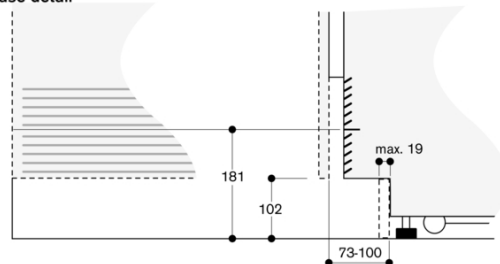


The hinge travel and resulting clearances from adjacent furniture units and handles can be found from the drawing while allowing for the thickness of the front panel. In the drawing, a furniture unit front panel thickness of 19 mm was assumed.



The maximum door panel dimensions are based on a clearance of 3 mm.

Base detail



Based on the standard appliance height, the height of the plinth is 102 mm. Maximum plinth thickness 19 mm.

