



AL400190

AA010410:

ventilation grid 90 cm

AA409400:

Furniture support

AD754045:

Adapter for AL round 2x DN150

AD854043:

Connection piece for AL 2x flat 150mm

AD854045:

Connection piece for AL 2x flat 150mm

ZB020090:

ventilation panel

## downdraft extractor 90 cm, Stainless steel

AL400190

- Extendable table ventilation, when not in use can be completely lowered into the worktop
- Dimmable, warm white LED light for ideal illumination of the whole cooktop
- Precision crafting of 3 mm stainless steel
- For surface mounting with a visible edge or for flush mounting
- Can be combined perfectly with other Vario appliances of the 400 series
- Extendable table ventilation, when not in use can be completely lowered into the worktop

Dimmable, warm white LED light for ideal illumination of the whole cooktop

Precision crafting of 3 mm stainless steel

For surface mounting with a visible edge or for flush mounting

Can be combined perfectly with other Vario appliances of the 400 series

### Output

Maximum air output in combination with remote fan units s. table remote fan units on page xxx.

Sound power level depends on the built-in situation.

### Features

3 electronically controlled power levels.

Intensive mode.

Interval ventilation.

Run-on function.

Grease filter saturation indicator.

Cartridge-type filter, dishwasher-safe.

LED light.

Spare covers for closing air outlets.

No connecting piece included.

### Planning notes

For operation with 2 Vario 400 series cooktops or cooktops up to 92 cm wide.

In combination with the cooktops CE/CI 490, installation in 60 cm deep worktops is possible.

Operation of Vario cooking appliances only possible without appliance cover.

Installation is possible in worktops made of stone, synthetics or solid wood. Heat resistance and watertight sealing of the cut edges must be observed. Concerning other materials please consult the worktop manufacturer.

If the remote fan unit is installed within the bottom cabinet and if combined with VK or VF ensure accessibility to the outlets.

The remaining surface of the worktop (min. 50 mm) between the cut-outs must be reinforced with a support. It is recommended to use furniture support AA 409 400/430.

Ovens that do not exceed the maximum allowed cabinet temperature can be combined with the table ventilation if built-in situation permits.

Recommendation for stainless steel parts to match hood that have to be welded and polished: brushed grain 280.

Surfaces: Stainless steel 1.4301, ground and brushed IIIC.

For air recirculation:

The exhaust outlet in the plinth should be as large as possible to minimise draughts.

The location of the exhaust outlet in the plinth is consumer-defined. Minimum cross-section 720 cm<sup>2</sup>.

To avoid smoke when frying/grilling refer to the manuals of VR/VP.

For air extraction:

For maximum exhaust air line use Gaggenau flat duct system AD 8... or Naber-System Compair flow. Other flat ducts are not permitted!

Duct connection front or backwards: 2 ducts DN 150 cylindrical or flat rectangular duct.

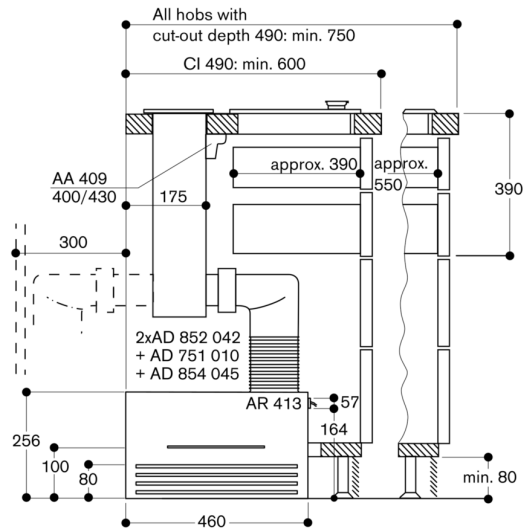
Downwards 2 ducts DN 150 flat rectangular duct (installation accessory).

When installing a ventilation hood with air extraction mode and a chimney-vented fireplace, the power supply line of the ventilation appliance needs a suitable safety switch.

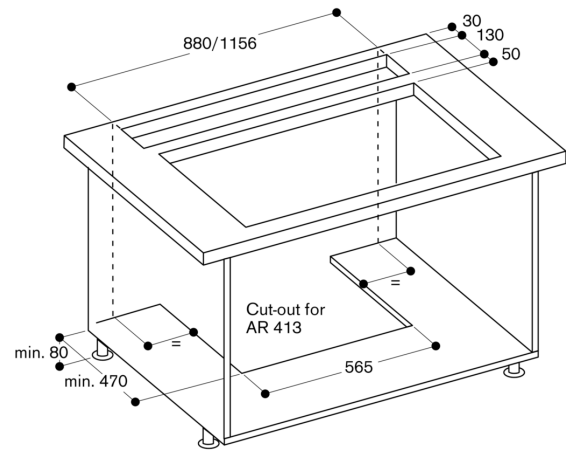
### Connection

Connecting cable 1.7 m with plug.

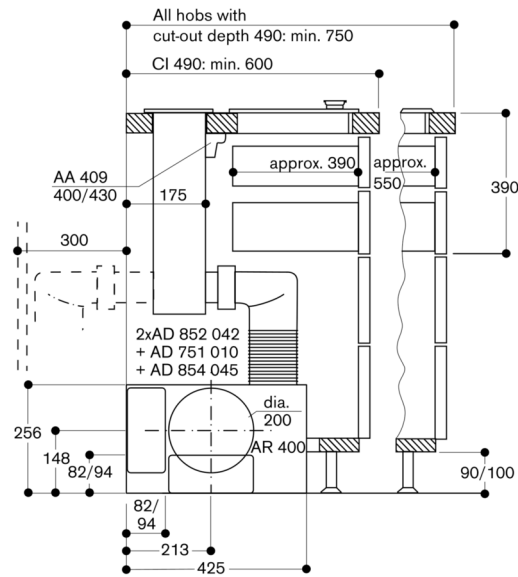
Depth measurements - base unit without back panel - recirculation  
for maximum power with 2x NW 150



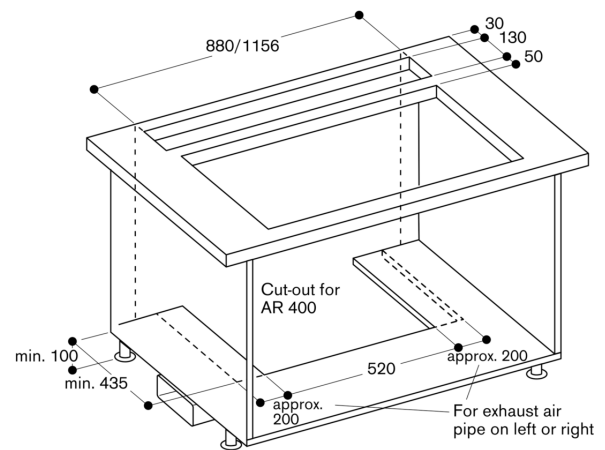
Circulated air: AL 400 with AR 413 in the base unit



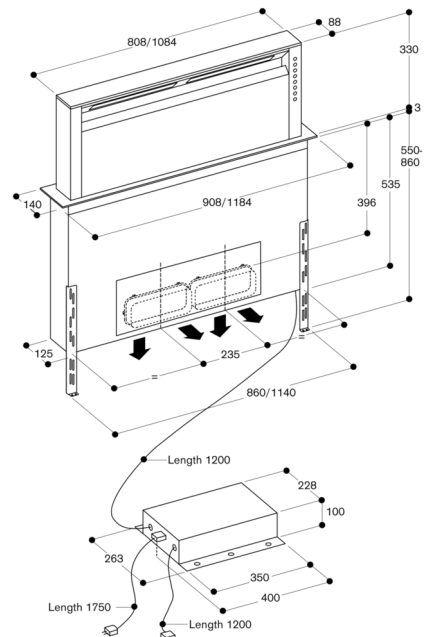
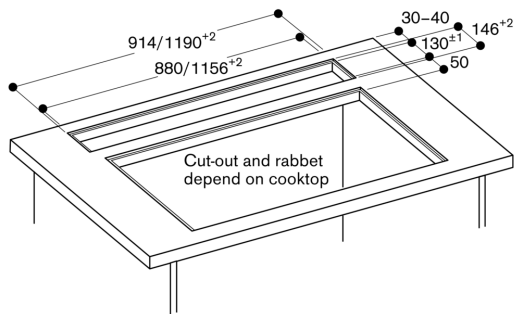
Depth measurements - base unit without back panel -  
exhaust air mode for maximum power with 2x NW 150



Exhaust air: AL 400 with AR 400 in the base unit

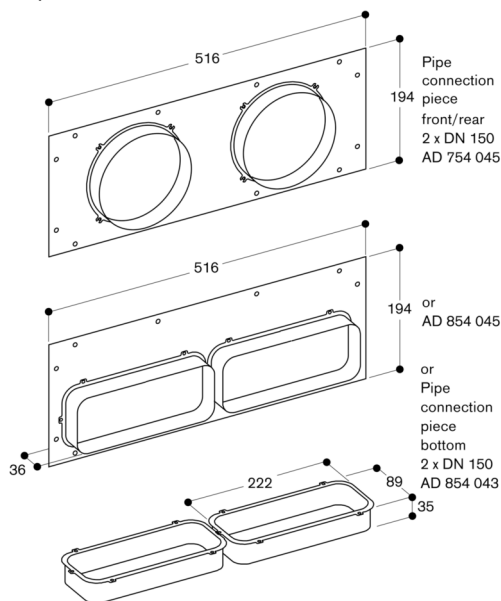


AL 400 installed flush

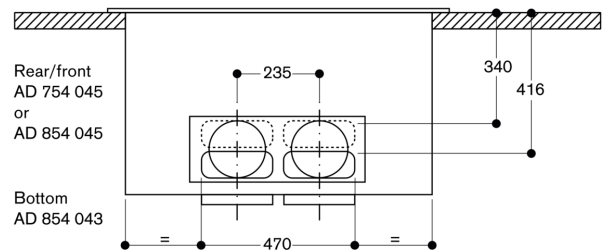


Pipe connection 2 x NW 150 front/rear  
Flat duct using AD 854 045  
Circular duct using AD 754 045  
  
Pipe connection 2 x NW 150 bottom  
Flat duct using AD 854 043

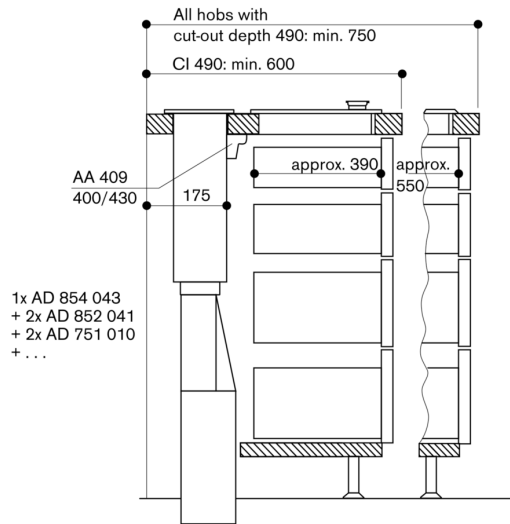
AD 754/854 045 and AD 854 043



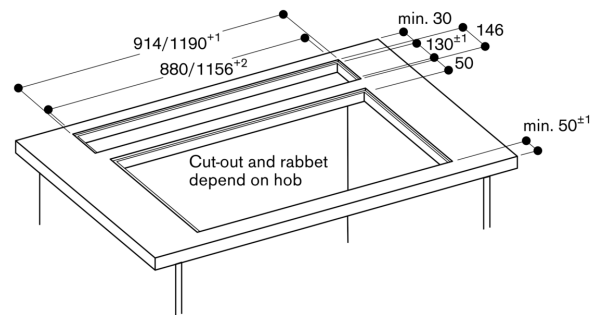
AL 400 connection positions DN 150



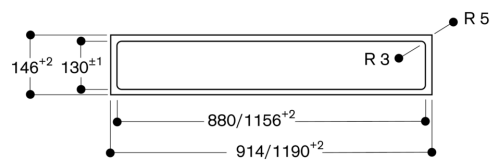
Depth measurements - base unit without back panel -  
exhaust air mode with floor feed 2x NW 150 round



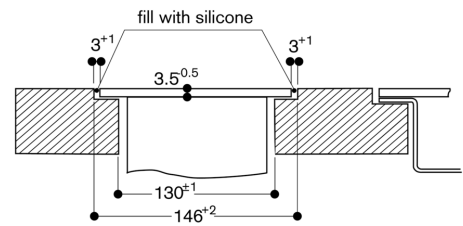
AL 400 installed flush



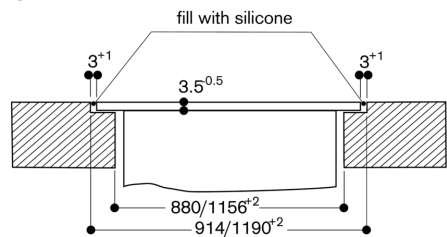
AL 400 cut-out flush-mounted



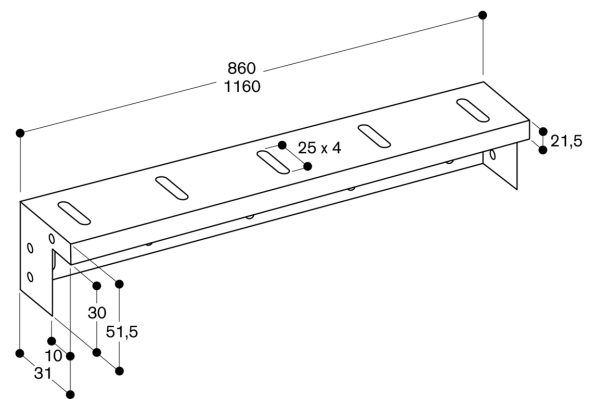
Cross-section



Longitudinal section



AA 409 401/431 furniture support



AA 010 410 air exhaust grille

