



Color Variants

AL400191
stainless steel
Width 90 cm

Required installation accessories

AD754045
Connection piece for 2 cylindrical ducts
DN 150

Installation Accessories

AA010410
Air exhaust grille recirculation mode

AL400191
Table ventilation 400 series
stainless steel
Width 90 cm
Air extraction / Air recirculation
Motorless



Extendable table ventilation, when not in use can be completely lowered into the worktop
Can be combined perfectly with other Vario appliances of the 400 series
Dimmable, neutral white surface LED light for ideal illumination of the whole cooktop
Precision crafting of 3 mm stainless steel
For surface mounting with a visible edge or for flush mounting
Motorless, can be combined with Gaggenau BLDC remote fan units

Output

Power levels depend on the remote fan unit, see table on page XX.

Features

3 electronically controlled power levels and 1 intensive mode.
Interval ventilation, 6 min.
Run-on function, 6 min.
Grease filter saturation indicator.
Cartridge-type filter, dishwasher-safe.
Neutral white surface LED light (3600 K), continuously dimmable.
Lamp output 4 x LED 6medium power 5W stripe.
Illuminance 191 lx.
Spare covers for closing air outlets.
No connecting piece included.

Consumption data

Consumption data is referred to a configuration with the remote fan unit AR 400 142.
Energy consumption 45.5 kWh/year.
Ventilation efficiency class A.
Illumination efficiency class E.
Grease filter efficiency class C.
Sound level min. 45 dB / max. 61 dB normal mode.

Planning notes

Refer to the table on page XX for the matching remote fan units for air recirculation or air extraction mode.
Secure the control unit to the side panel of the cabinet, not to the base of the cabinet or the kitchen floor.
Connection to the respective appliances via network cable.
Operation of Vario cooking appliances only possible without appliance cover.
Max. output of cooktops 18 kW.
Installation is possible in worktops made of stone, synthetics or solid wood. Heat resistance and watertight sealing of the cut edges must be observed. Concerning other materials please consult the worktop manufacturer.
The remaining surface of the worktop (min. 50 mm) between the cut-outs must be reinforced with a support. It is recommended to use furniture support AA 409 401/431.
Ovens that do not exceed the maximum allowed cabinet temperature can be combined with the table ventilation if built-in situation permits.
To avoid smoke when frying/grilling refer to the manuals of VR/VP.
When installing a ventilation hood with air extraction mode and a chimney-vented fireplace, the power supply line of the ventilation appliance needs a suitable safety switch.

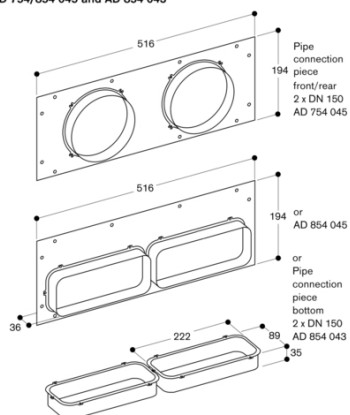
Connection

Characteristics
Product name/family
Color chimney
Typology
Downdraft
Approval certificates
, CE, Eurasian, G-Mark, VDE
Length electrical supply cord
170
Required niche size for installation (HxWxD)
540mm x 840.0mm x 122mm
Height of the chimney
Height of product, without chimney
540
Net weight
34.4
Type of control
Electronic
Number of speed settings
Maximum output air extraction
600
Boost position output recirculating
Maximum output recirculating air
530
Boost position air extraction
Number of lights
4
Noise level
61
Diameter of air outlet
Grease filter material
Washable stainless steel
Odour filter
No
Operating Mode
Convertible
Delay Shut off modes
6
Required accessories
Optional accessories
AA400510
Type of lamps used
LED
Total power of the lamps
20
Grease filter type
Kassette
Clean filter reminders
Connection Rating
65
Fuse protection
10
Voltage
230
Frequency
60; 50
Plug type
CH plug w/ earthing, Gardy plug w/ earthing, GB plug
Installation typology
Built-in
Universal Product Code
825225913696
Material body
Stainless steel
Approval certificates
, CE, Eurasian, G-Mark, VDE
Length of electrical supply cord (in)
Plug type
CH plug w/ earthing, Gardy plug w/ earthing, GB plug
Dimensions of the product, with chimney (if exists) (in)
/ x x
Dimensions of the packed product
14.96 x 24.99 x 40.55
Height of the chimney (in)
Vertical rise height
Required distance above cooktop/ ranges
Net weight
76.000
Gross weight
86.000
Motor location
External motor
Maximum output recirculating air
Diameter of air duct (in) top
Diameter of air duct (in) back
Discharge direction
horizontal

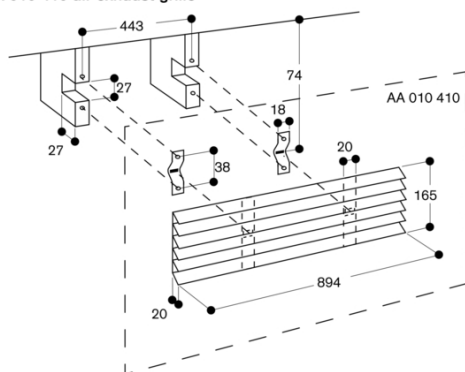
Total connected load 65 W.
Network cable 1.2 m.

AL400191
Table ventilation 400 series
stainless steel
Width 90 cm
Air extraction / Air recirculation
Motorless
2022-02-17
Page 2

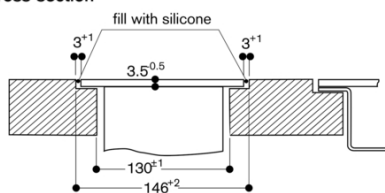
AD 754/854 045 and AD 854 043



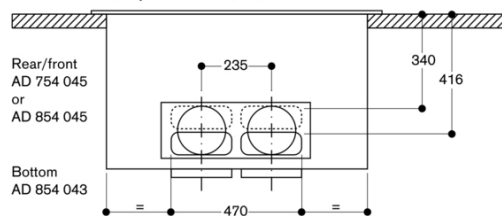
AA 010 410 air exhaust grille



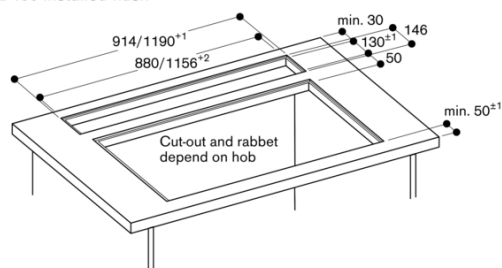
Cross-section



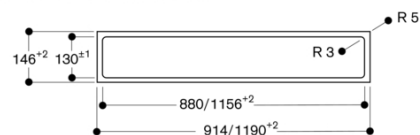
AL 400 connection positions DN 150



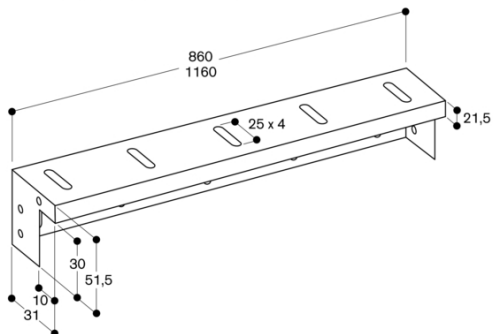
AL 400 installed flush



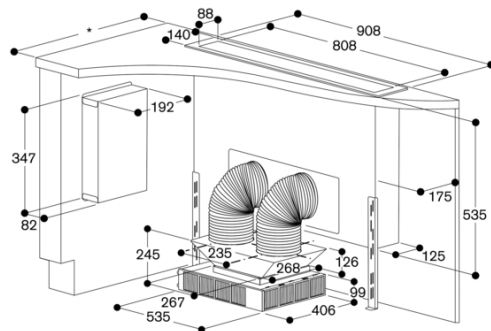
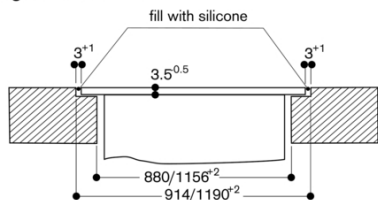
AL 400 cut-out flush-mounted



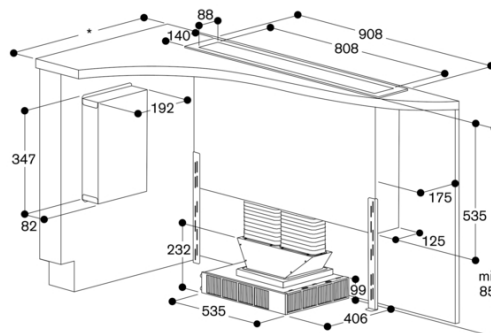
AA 409 401/431 furniture support



Longitudinal section

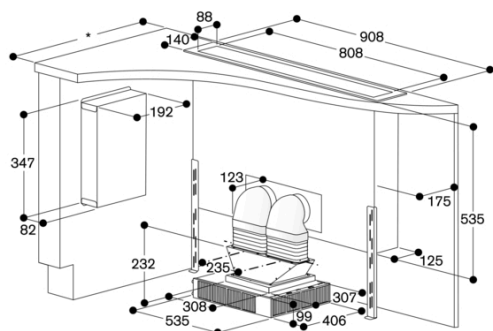
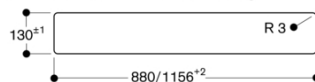


* All cooktops with cut-out depth 492: min. 750

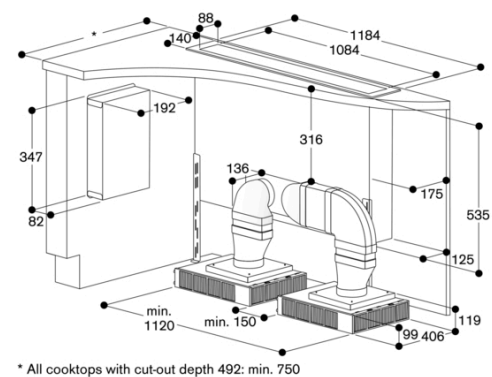
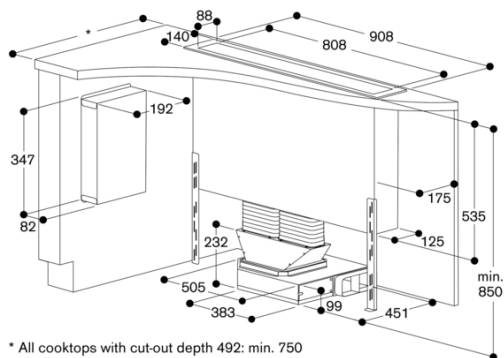
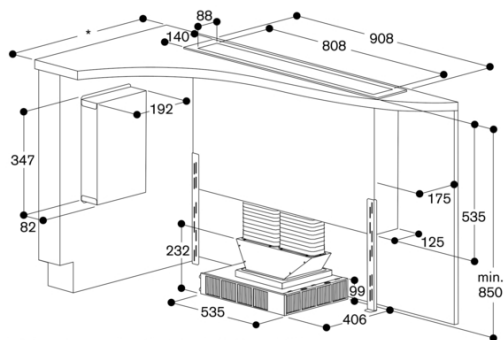


* All cooktops with cut-out depth 492: min. 750

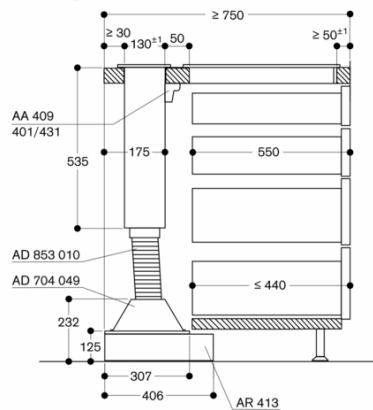
AL 400 cut-out for surface mounting



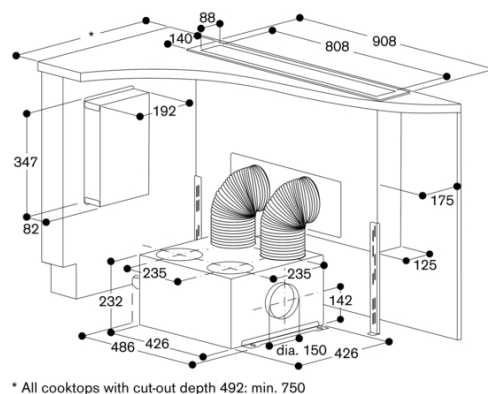
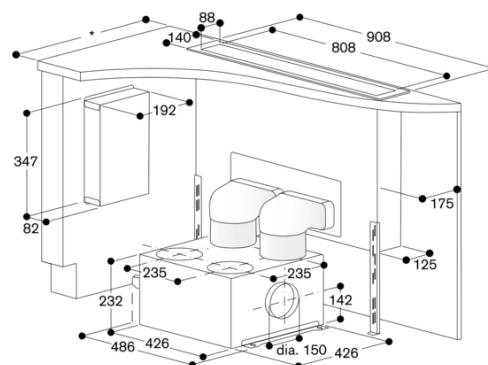
* All cooktops with cut-out depth 492: min. 750

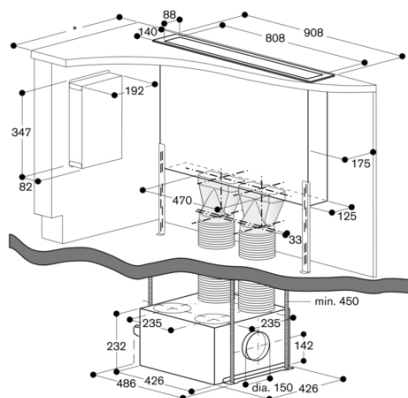


Cross-section of upper cabinet for AL 400 (without back wall)
with AR 413; connection at the bottom

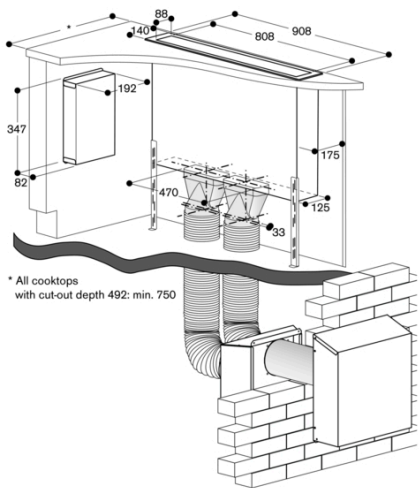


measurements in mm

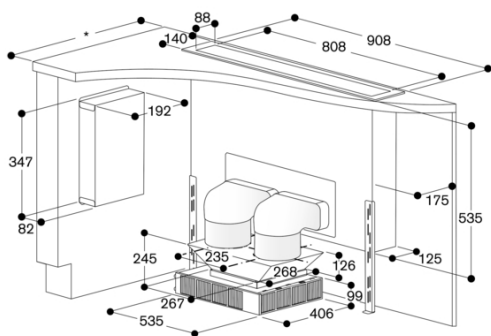




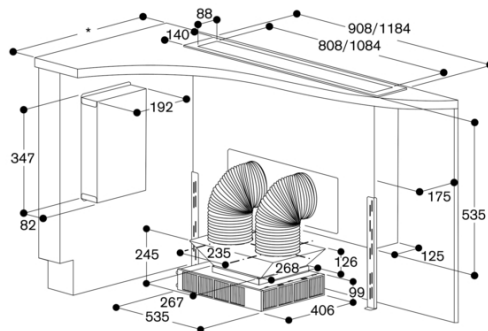
* All cooktops with cut-out depth 492: min. 750



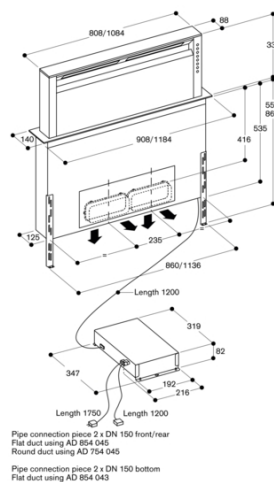
* All cooktops with cut-out depth 492: min. 750



* All cooktops with cut-out depth 492: min. 750



* All cooktops with cut-out depth 492: min. 750



Pipe connection piece 2 x DN 150 front/rear
 Flat duct using AD 854 045
 Round duct using AD 754 045
 Pipe connection piece 2 x DN 150 bottom
 Flat duct using AD 854 045