



BM484710

Optional accessories

installation accessories

combi-microwave oven 400 series
30", door hinge: right, stainless steel-backed
glass front
BM484710

Handleless door / automatic door opening
 Single operation and combination of microwave, grill and oven
 Sequential operation of up to 5 modes incl. programming of combined operation and rest time
 TFT touch display
 Panel-free appliance with surface control module
 Electronic temperature control
 Net volume 1.3 cu. ft. (36 l).

Programmes

Microwave operation with 5 output levels: 1000, 600, 360, 180, 90 W.
 Oven operation with 4 heating methods:
 Hot air 100 °F (40 °C) and from 210 °F to 480 °F (100 °C to 250 °C), Full surface grill + hot air from 210 °F to 480 °F (100 °C to 250 °C), Full surface grill + circulated air from 210 °F to 480 °F (100 °C to 250 °C), Full surface grill with 3 levels of intensity, maximum output 2000 W.
 Heating methods with microwave output levels 600, 360, 180 and 90 W freely combinable.
 15 automatic programmes with weight indication, customisable:
 4 defrosting programmes 4 cooking programmes 7 combination programmes
 Option to save individual recipes.
 Sabbath mode with constant temperature of 185 °F (85 °C).

Handling

Automatic door opening.
 Rotary knob and TFT touch display operation.
 Clear text display.
 Information key with use indicators.
 Side-opening door opens up to 180° angle.

Features

Innowave.
 Rapid heating.
 Timer functions: cooking time, cooking time end, timer, stopwatch, long-term timer (certified by Star-K).
 4 tray levels.
 Actual temperature display.
 60 W halogen light on the side.

Safety

Thermally insulated door with triple glazing.
 Child lock.
 Safety shut-off.
 Cooled housing with temperature protection.

Cleaning

Hygienic stainless steel interior with glass ceramic base.
 Interior back wall with catalytic coating.

Planning notes

Door hinge not reversible.
 The panel surface of the appliance extends 1 7/8 " (47 mm) from the furniture cavity.

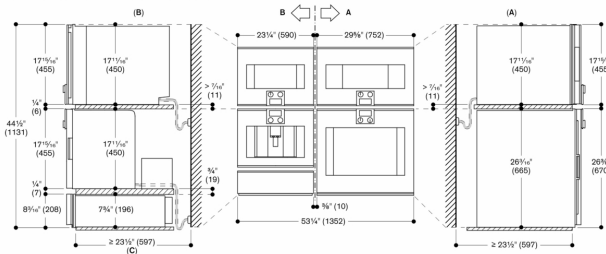
If the handle (optional accessory) is retrofitted, the outer edge of the door handle extends 3 11/16" (94 mm) from the furniture cavity.
 Consider the overhang, incl. the door handle where applicable, when planning to open drawers next to the appliance.
 When planning a corner solution, pay attention to the side-opening door and the minimum required distance to the wall.
 The mains socket needs to be planned outside of the built-in niche.
 Canada only: Minimum installation height 91,6 cm (top edge of niche bottom).

Connection

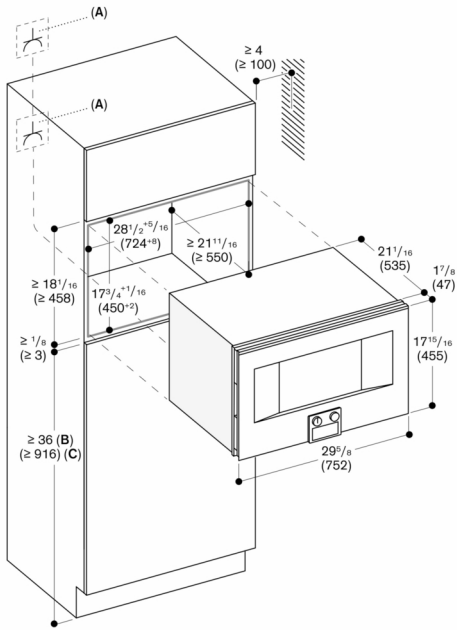
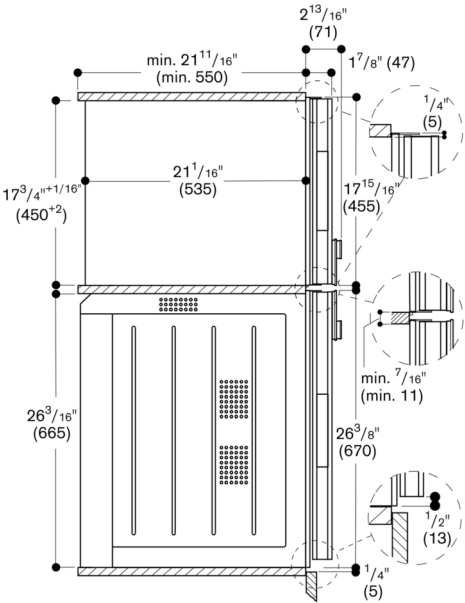
Total connected load 3.1 KW.
 Total Amps: 2*20 A.
 240 / 208 V / 60 Hz.
 Connecting cable 1.5 m without plug.

Side view of BM 484/485 above BO

Combination of 4 with 24" and 30" wide products



For detailed information regarding the plumbing requirements (CM470 and combi-steam oven appliances) please refer to the individual planning notes
C: Depth including CM transformer
measurements in inches (mm)



A: Electrical connection
B: USA
C: Canada
Measurements in inches (mm)