



BO421111
Oven 400 series
Stainless steel-backed full glass door
Width 60 cm
Left-hinged
Controls at the top



Handleless door / automatic door opening
 Pyrolytic system
 9 heating methods, with baking stone function
 TFT touch display
 Panel-free appliance with surface control module
 Electronic temperature control from 50 °C to 300 °C
 Net volume 76 litres

Heating methods

Hot air.
 Eco hot air.
 Top + bottom heat.
 Top heat.
 Bottom heat.
 Hot air + bottom heat.
 Full surface grill + circulated air.
 Full surface grill.
 Baking stone function.

Handling

Automatic door opening.
 Rotary knob and TFT touch display operation.
 Clear text display.
 Option to save individual recipes.
 Information key with use indicators.
 Side-opening door opens up to 180° angle.

Features

Baking stone socket.
 Actual temperature display.
 Rapid heating.
 Timer functions: cooking time, cooking time end, timer, stopwatch, long-term timer.
 60 W halogen light on the top.
 Enamelled side shelf supports with 4 tray levels, pyrolysis-safe.

Safety

Thermally insulated door with quadruple glazing.
 Child lock.
 Safety shut-off.
 Cooled housing with temperature protection.

Cleaning

Pyrolytic system.
 Gaggenau enamel.
 Heated catalyser to clean the oven air.

Planning notes

Door hinge not reversible.
 The door panel surface of the appliance extends 47 mm from the furniture cavity.
 If the handle (optional accessory) is retrofitted, the outer edge of the door handle extends 94 mm from the furniture cavity.
 Consider the overhang, incl. the door handle where applicable, when planning to open drawers next to the appliance.
 When planning a corner solution, pay attention to the 90° door opening angle.
 To achieve the 550 mm installation depth, the connection cable needs to follow the slanted edge on the lower right hand corner of the housing.
 The mains socket needs to be planned outside of the built-in niche.

Connection

Energy efficiency class A at a range of energy efficiency classes from A+++ to D.
 Total connected load 3.7 KW.

Characteristics

Gross weight
60.0

Color / Material Front
Built-in / Free-standing
Built-in

Integrated Cleaning system
Pyrolytic

Min. required niche size for installation (HxWxD)
590-590 x 560-560 x 550

Dimensions
595 x 590 x 547

Dimensions of the packed product (HxWxD)
780 x 760 x 680

Control Panel Material
without panel

Door Material
Stainless steel behind glass

Net weight
56.5

Usable volume of cavity
76

Cooking method
Baking stone function, Bottom heat, Full width grill, Hot Air, Hot Air-Eco, Hot air grilling, Top/bottom heat, Top heat

First cavity material
Number of interior lights
1

Length electrical supply cord
Interior Lights - cavity 1
1

Pull-out system
Accessory

Clock function
Alarm, Off, On, timer

Included accessories
1 x enamel baking tray, suit. pyrolytic clean, 1 x glass pan, 1 x grill shelf

Bake Element Wattages cavity 1
Broil Element Wattages cavity 1
3000

Convection Element Wattages cavity 1
2100

Microwave wattage cavity 1
Drawer wattage
Energy efficiency rating
A

Energy consumption per cycle conventional - NEW (2010/30/EC)
1.25

Energy consumption gas oven per cycle conventional - NEW (2010/30/EC)
0.83

Energy consumption gas oven per cycle forced air convection - NEW (2010/30/EC)
0.83

Energy consumption gas oven per cycle forced air convection - NEW (2010/30/EC)
0.83

Energy efficiency index (2010/30/EC)
95.4

Connection rating
3700

Fuse protection
16

Voltage
220-240

Frequency
50

Plug type
no plug

Connecting cable type
Universal Product Code
Color / Material Front
Alternative colors available
BO421101

Energy input
Electric

Length of electrical supply cord (in)
Required cutout/niche size for installation (in)
x x

Dimensions of the packed product
30.70 x 26.77 x 29.92

Net weight
125.000

Gross weight
132.000

Length electrical supply cord
Net weight

Plan a connection cable.

Color Variants

BO421111
Stainless steel-backed full glass door
Width 60 cm

Included accessories

1 x enamel baking tray, suit. pyrolytic clean.
 1 x glass pan.
 1 x grill shelf.
 1 x enamel baking tray, suit. pyrolytic clean.
 1 x glass pan.
 1 x grill shelf.
 1 x enamel baking tray, suit. pyrolytic clean.
 1 x glass pan.
 1 x grill shelf.

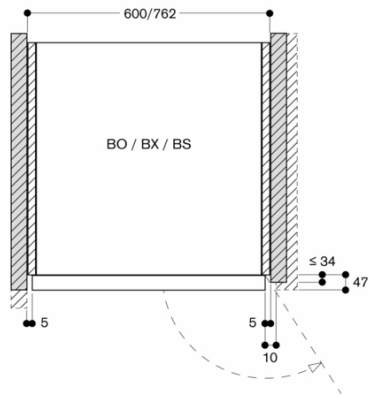
Optional accessories

BA016105
Pull-out system
BA026115
Baking tray, enamelled
BA036105
Wire rack, chromium-plated.
BA056115
Heating element for baking stone and Gastronorm roaster.
BA056133
Baking stone.
BA226105
Grill tray, enamelled
BS020002
Pizza paddle, set of 2.
GN340230
Gastronorm roaster in cast aluminium.

GAGGENAU

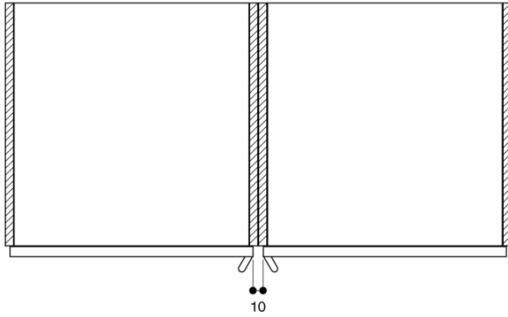
BO421111
 Oven 400 series
 Stainless steel-backed full glass door
 Width 60 cm
 Left-hinged
 Controls at the top
 2023-06-15
 Page 2

Air inlet cross section at the door edges

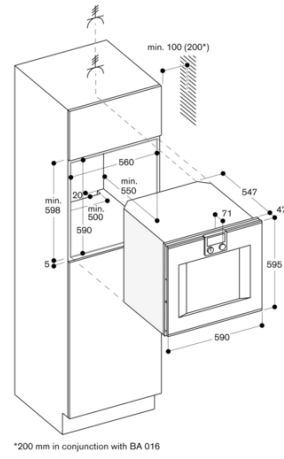
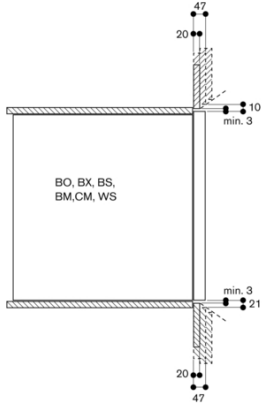


Measurements in mm

When installed next to each other



Cross section of the top/bottom door edge gaps



*200 mm in conjunction with BA 016