



Color Variants

BO451211  
Stainless steel-backed full glass door  
Width 60 cm

Included accessories

1 x enamel baking tray.  
suit. pyrolitic clean.  
1 x glass pan.  
1 x grill shelf.  
1 x pluggable meat probe.

Optional accessories

BA016105  
Pull-out system  
BA026115  
Baking tray, enamelled  
BA036105  
Wire rack, chromium-plated  
BA046115  
Glass tray  
BA056125  
Heating element for baking stone  
BA056133  
Baking stone.  
BA226105  
Grill tray, enamelled  
BS020002  
Pizza paddle, set of 2.  
GN340230  
Gastronorm roaster in cast aluminium.

Installation Accessories

BA476110  
Handle bar, stainless steel

Product Variants

BO450211  
Oven 400 series  
Stainless steel-backed full glass door  
Width 60 cm  
Right-hinged  
Controls at the top

BO451211  
Oven 400 series  
Stainless steel-backed full glass door  
Width 60 cm  
Left-hinged  
Controls at the top

Handleless door / automatic door opening  
Pyrolytic system  
13 heating methods, with core temperature probe and baking stone function  
TFT touch display  
Panel-free appliance with surface control module  
Electronic temperature control from 30 °C to 300 °C  
Net volume 76 litres

Heating methods

Hot air.  
Eco hot air.  
Top + bottom heat.  
Top heat.  
Bottom heat.  
Hot air + bottom heat.  
Full surface grill + circulated air.  
Full surface grill.  
Compact grill.  
Baking stone function.  
Roaster function.  
Dough proofing.  
Defrosting.

Handling

Automatic door opening.  
Rotary knob and TFT touch display operation.  
Clear text display.  
Option to save individual recipes (incl. core temperature probe).  
Information key with use indicators.  
Side-opening door opens up to 180° angle.

Features

Core temperature probe with automatic shut-off.  
Baking stone socket.  
Actual temperature display.  
Rapid heating.  
Timer functions: cooking time, cooking time end, timer, stopwatch, long-term timer.  
60 W halogen light on the top.  
10 W halogen light on the side.  
Enamelled side shelf supports with 4 tray levels, pyrolysis-safe.

Safety

Thermally insulated door with quadruple glazing.  
Child lock.  
Safety shut-off.  
Cooled housing with temperature protection.

Cleaning

Pyrolytic system.  
Gaggenau enamel.  
Heated catalyser to clean the oven air.

Planning notes

Door hinge not reversible.  
The door panel surface of the appliance extends 47 mm from the furniture cavity.  
If the handle (optional accessory) is retrofitted, the outer edge of the door handle extends 94 mm from the furniture cavity.  
Consider the overhang, incl. the door handle where applicable, when planning to open drawers next to the appliance.  
When planning a corner solution, pay attention to the 90° door opening angle.

Characteristics  
Color / Material Front  
Stainless steel  
Built-in / Free-standing  
Built-in  
Integrated Cleaning system  
Pyrolytic  
Required niche size for installation (HxWxD)  
590-590 x 560-560 x 550  
Dimensions of the product (mm)  
595 x 590 x 547  
Dimensions of the packed product (HxWxD) (mm)  
780 x 760 x 680  
Control Panel Material  
without panel  
Door Material  
Stainless steel behind glass  
Net weight (kg)  
56.361  
Usable volume of cavity (l)  
76  
Cooking method  
Baking stone function, Bottom heat, Conventional heat, Defrost, Dough proving setting, Full width grill, Half width grill, Hot Air, Hot air and 1/1 bottom heating, Hot Air-Eco, Hot air grilling, Roaster function, Top heat  
First cavity material  
Enamelled  
Number of interior lights  
2  
Approval certificates  
CE, VDE  
Length electrical supply cord (cm)  
Interior Lights - cavity 1  
2  
Pull-out system  
Accessory  
Clock function  
Alarm, Off, On, timer  
Included accessories  
1 x enamel baking tray,suit. pyrolitic clean, 1 x glass pan, 1 x grill shelf, 1 x pluggable meat probe  
Bake Element Wattages cavity 1 (W)  
Broil Element Wattages cavity 1 (W)  
3000  
Convection Element Wattages cavity 1 (W)  
2100  
Microwave wattage cavity 1 (W)  
Drawer wattage (W)

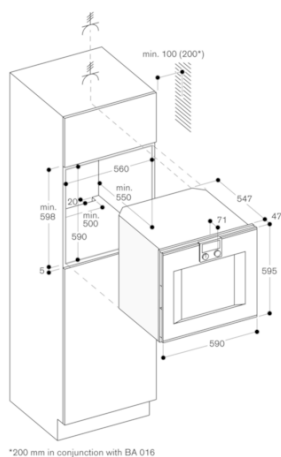
Consumption and connection features  
Energy efficiency class - NEW (2010/30/EC)  
A  
Energy consumption per cycle conventional - NEW (2010/30/EC)  
1.25  
Energy consumption gas oven per cycle conventional - NEW (2010/30/EC)  
Energy consumption per cycle forced air convection - NEW (2010/30/EC)  
0.83  
Energy consumption gas oven per cycle forced air convection - NEW (2010/30/EC)  
Energy efficiency index (2010/30/EC)  
95.4  
Connection Rating (W)  
3700  
Current (A)  
10  
Voltage (V)  
400  
Frequency (Hz)  
50  
Plug type  
fixed connection, no plug  
Connecting cable type  
Universal Product Code  
Color / Material Front  
Stainless steel  
Alternative colors available  
Energy input  
Electric  
Approval certificates  
CE, VDE

To achieve the 550 mm installation depth, the connection cable needs to follow the slanted edge on the lower right hand corner of the housing. The mains socket needs to be planned outside of the built-in niche.

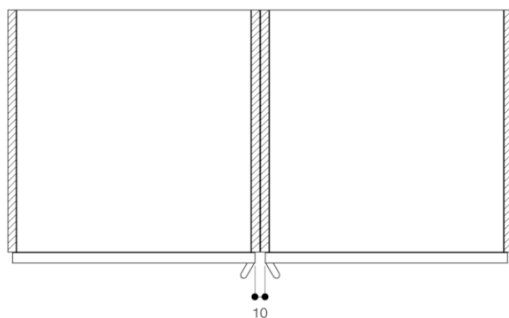
Connection

Energy efficiency class A at a range of energy efficiency classes from A+++ to D.  
Total connected load 3.7 kW.  
Plan a connection cable.

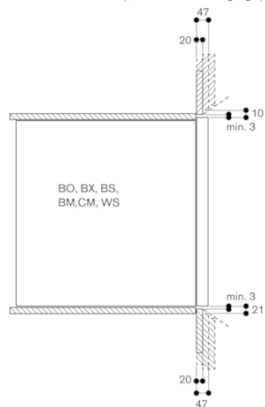
BO451211  
Oven 400 series  
Stainless steel-backed full glass door  
Width 60 cm  
Left-hinged  
Controls at the top  
2019-11-13  
Page 2



When installed next to each other



Cross section of the top/bottom door edge gaps



Air inlet cross section at the door edges

