



BX481612

BA018165:

1 telescopic shelf rail, 76cm/90cm oven

BA028115:

Baking tray, for 76cm/90cm oven

BA038165:

Wire shelf, for 76cm/90cm oven

BA058115:

Heating elem. 230 V, for 76cm/90cm oven

BA058133:

Baking stone for 76cm/90cm oven

BS020002:

Set of 2 pizza paddles

GN340230:

Gastronorm roaster GN 2/3

Double oven 400 series 30"

BX481612

Pyrolytic system

17 heating methods with core temperature probe, rotisserie spit and baking stone function
Core temperature probe with estimation of cooking time

TFT touch display

Electronic temperature control from 30 °C to 300 °C

2 x 110 litres net volume

Heating methods

Hot air.

Eco hot air. Top + bottom heat. Top + 1/3 bottom heat. Top heat. 1/3 top + bottom heat. Bottom heat. Hot air + bottom heat. Hot air + 1/3 bottom heat. Full surface grill + circulated air. Full surface grill. Compact grill. Baking stone function. Roaster function. Dough proofing. Defrosting. Keeping warm.

Handling

Rotary knob and TFT touch display operation.

Clear text display.

Information key with use indicators.

Side-opening door opens up to 180° angle.

Features

Three-point core temperature probe with automatic shut-off and estimation of cooking time.

Rotisserie spit (lower oven).

Baking stone socket.

Actual temperature display.

Rapid heating.

Timer functions: cooking time, cooking time end, timer, stopwatch, long-term timer (certified by Star-K).

60 W halogen light on the top.

10 W halogen light on the side.

Enamelled side shelf supports with 5 tray levels, pyrolysis-safe.

Safety

Thermally insulated door with quadruple glazing.

Child lock.

Safety shut-off.

Cooled housing with temperature protection.

Cleaning

Pyrolytic system.

Gaggeneau enamel.

Heated catalyser to clean the oven air.

Planning notes

Door hinge not reversible.

The facade of the appliance extends 47 mm from the furniture cavity.

Consider the overhang when planning to open drawers next to the appliance.

When planning a corner solution, pay attention to the side-opening door and the minimum required distance to the wall.

To achieve the 550 mm installation depth, the connection cable needs to follow the slanted edge on the lower right hand corner of the housing.

The mains socket needs to be planned outside the built-in niche.

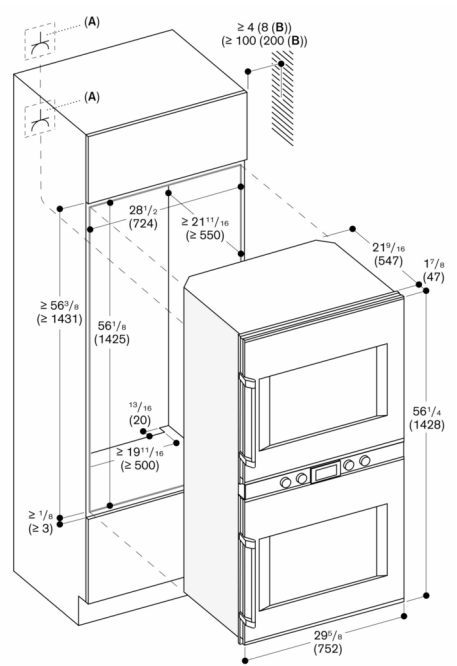
Connection

Total connected load 9.2 KW.

Total Amps: 40 A.

110-120 V / 220-240 V / 60 Hz.

Connecting cable 1.8 m without plug.



A: Electrical connection
B: 8" (200 mm) in conjunction with BA 018
Measurements in inches (mm)