



Color Variants

VP414610

Stainless steel

Width15 "

Included accessories

2 x spatula.

VP414610

Vario Teppan Yaki 400 series

Stainless steel

Width15 "

Cooking directly on the hard-chromed metal surface, without any pots or pans
Exact temperature control up to 480 °F
Optimum heat distribution
Solid stainless steel control knob
Precision crafted 3 mm stainless steel
For surface mounting with a visible edge or for flush mounting
Can be combined perfectly with other Vario appliances of the 400 series

Cooking zones

Usable area W 12 3/16 " x D 17 5/16 ".

Handling

Control knobs with illuminated ring, cooking zone and temperature markings.
Electronic temperature control from 240 °F to 480 °F.

Features

Two zones, each 1500 W, can be operated together as a complete surface or each halve separately.
Keeping warm setting.
Even with traces of use, always easy to clean like a cast pan.

Safety

Safety shut-off.

Planning notes

Depending on the type of installation (surface-mounted or flush-mounted, with or without an appliance cover), the specific location of the cut-out and the knob positions may vary.
If installing with the appliance cover VA 440 or filler strip VA 450 take into account the additional space required for the depth.
If combining several appliances with at least one appliance cover, the filler strip VA 450 is required to compensate for the depth of the appliance without the appliance cover.
If combining several Vario appliances of the 400 series, a connection strip VA 420 must be placed between the appliances. Depending on the type of installation, the corresponding connection strip must be provided.
In the cut-out, the installation system requires the side edge to be at least 10 mm for surface mounting and at least 13 mm for flush mounting. Ensure a continuous cut surface of 90°.
The bearing capacity and stability, in the case of thin worktops in particular, must be supported using suitable substructures. Take into account the appliance weight and additional loads. Additional instructions for flush mounting:
Installation is possible in worktops made of stone, synthetics or solid wood. Heat resistance and watertight sealing of the cut edges must be observed. Concerning other materials please consult the worktop manufacturer.
The groove must be continuous and even, so that uniform placing of the appliance on the gasket is ensured. Do not use discontinuous lining.
The joint width may vary due to size tolerances of the combinations and of the worktop cut-out.
If installing several appliances in individual cut-outs allow for a division bar of minimum 50 mm between the individual cut-outs.

Characteristics

Product name/family

Vario/Domino Teppan Yaki

Built-in / Free-standing

Built-in

Energy input

Electric

Type of control

Electronic

Grill grating material

Required niche size for installation

(HxWxD)

72 x 360 x 490

Width of the appliance

380

Dimensions

72 x 380 x 520

Dimensions of the packed product

(HxWxD) (mm)

230 x 460 x 600

Net weight (kg)

13.582

Gross weight (kg)

14.8

Residual heat indicator

Separate

Location of control panel

Hob front

Basic surface material

Color of surface

Stainless steel, Stainless steel

Color of frame

Stainless steel

Approval certificates

CSA, ETL, UL

Length electrical supply cord (cm)

180

Consumption and connection features

Connection rating (W)

3000

Gas connection rating (W)

Current (A)

16

Voltage (V)

208-240

Frequency (Hz)

60

2020-12-19

Page 1

Built-in control panel to be integrated in the bottom cabinet at drawer level.

Panel thickness 5/8 " - 1 ".

The drawing "Installation of the control knob" must be observed if the panel is more than 1 " thick (there must be a recess at the rear).

A minimum lateral clearance of at least 40 mm from adjacent heat-sensitive furniture or contact surfaces must be observed or thermal insulation fitted.

Appliance can be snapped into the worktop from above.

Appliance weight: approx. 14 kg.

Connection

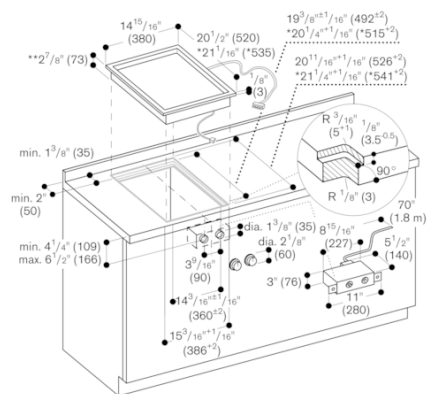
Total connected load 3.0 KW.

Total Amps: 16 A.

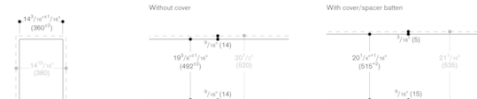
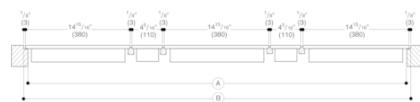
Connecting cable 1.8 m without plug.

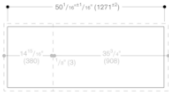


When installing with appliance cover or spacer batten, pay attention to the deeper cut-out and the front and rear groove width.

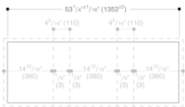


* with appliance cover or spacer batten.
See separate planning notes.
** 3 1/2" (88 mm) in the area of the cable clip (right, centre).

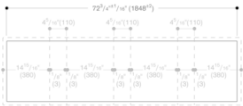




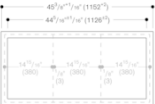
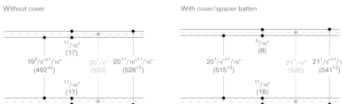
14 7/8"	(380)	Appliance
7 1/8"	(188)	Connection strip
90 1/2"	(2291)	Appliance
7 1/8"	(188)	Overhang
90 1/2"	(2271)	Cut-out



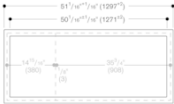
14 7/8"	(380)	Appliance
7 1/8"	(188)	Connection strip
90 1/2"	(2291)	Appliance
7 1/8"	(188)	Overhang
90 1/2"	(2271)	Cut-out



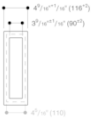
14 7/8"	(380)	Appliance
7 1/8"	(188)	Connection strip
90 1/2"	(2291)	Appliance
7 1/8"	(188)	Overhang
90 1/2"	(2271)	Cut-out



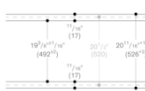
14 7/8"	(380)	Appliance
7 1/8"	(188)	Connection strip
90 1/2"	(2291)	Appliance
7 1/8"	(188)	Overhang
90 1/2"	(2271)	Cut-out



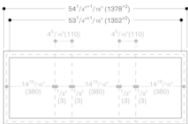
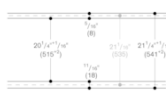
14 7/8"	(380)	Appliance
1/2"	(13)	Connection strip
20 3/4"	(526)	Appliance
50 7/8"	(1291)	Overhang
50 7/8" (1291)	(1291)	Cutout
7 1/2"	(190)	Overhang
7 1/2"	(190)	Slitscore joint
54 1/2" (1393)	(1393)	Cutout with groove



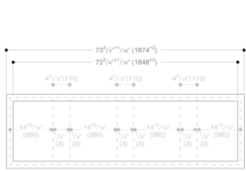
Without cover



With cover/spacer batten

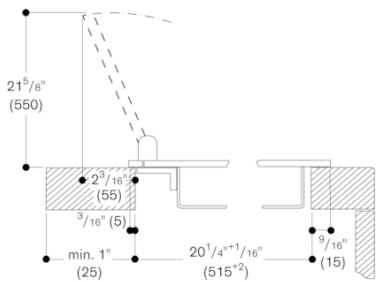


14 7/8"	(380)	Appliance
1/2"	(13)	Connection strip
20 3/4"	(526)	Appliance
50 7/8"	(1291)	Overhang
50 7/8" (1291)	(1291)	Cutout
7 1/2"	(190)	Overhang
7 1/2"	(190)	Slitscore joint
54 1/2" (1393)	(1393)	Cutout with groove



14 7/8"	(380)	Appliance
1/2"	(13)	Connection strip
20 3/4"	(526)	Appliance
50 7/8"	(1291)	Overhang
50 7/8" (1291)	(1291)	Cutout
7 1/2"	(190)	Overhang
7 1/2"	(190)	Slitscore joint
54 1/2" (1393)	(1393)	Cutout with groove

Installation with appliance cover/spacer batten;
surface installation



Installation with appliance cover/spacer batten;
flush installation

