



#### Color Variants

**WT260101**  
Free-standing, slide-under or stackable  
Width 60 cm, height 84.2 cm

**WT260101**  
Tumble dryer with heat pump  
Free-standing, slide-under or stackable  
Width 60 cm, height 84.2 cm



Combines perfectly with WM 260 163  
Large drum with interior lighting  
Large porthole with 180 ° door opening angle  
Self-cleaning heat exchanger,  
highest comfort and constantly low consumption  
Heat pump technology  
Energy efficiency class A+++

#### Handling

Electronic control.  
Illuminated rotary knob with integrated On-Off switch.  
Touch key operation.  
TFT display with clear text and symbols.  
Programme sequence and remaining time display.  
Time delay up to 24 hours.  
Multiple signal tones.

#### Technical Features

Moisture and time controlled programmes.  
Heat pump technology.  
Self-cleaning heat exchanger.  
Anti-crease cycle at programme end.  
Child lock.  
Home network integration for digital services (Home Connect) wireless via WiFi.  
The use of the Home Connect functionality depends on the Home Connect services, which are not available in every country. For further information please check: home-connect.com.

#### Programmes

Cottons.  
Easy Care.  
Mix.  
Delicates.  
Wool in Basket.  
Cold.  
Warm.  
Hygiene.  
Super 40.  
Towels.  
Sports.  
Downs.  
Duvets.  
Shirts/Blouses.  
Options: Easy Iron, Drying Target, Drying Target Adjustment, Spin Speed, Gentle Dry.

#### Features

Stainless steel drum with honeycomb structure.  
Dry wool without shrinking or matting thanks to the included basket for woollens.  
Volume capacity from 1 to 8 kg.  
Drum interior lighting.

#### Consumption data

Energy efficiency class A+++ at a range of energy efficiency classes from A++ + to D.

#### Planning notes

Right-hinged, reversible.  
Height-adjustable feet.  
Height for slide-under installation: 84.2 cm.  
Stackable over the washing machine WM 260 163 in combination with special accessory.

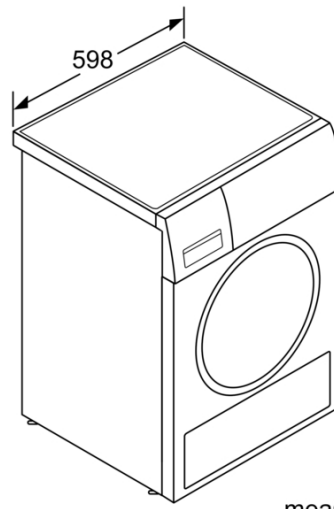
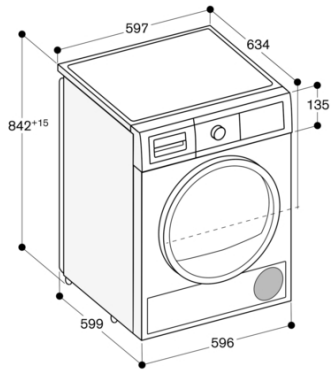
#### Connection

Total connected load 1.0 KW.  
Connection cable 1.45 m with plug.

#### Characteristics

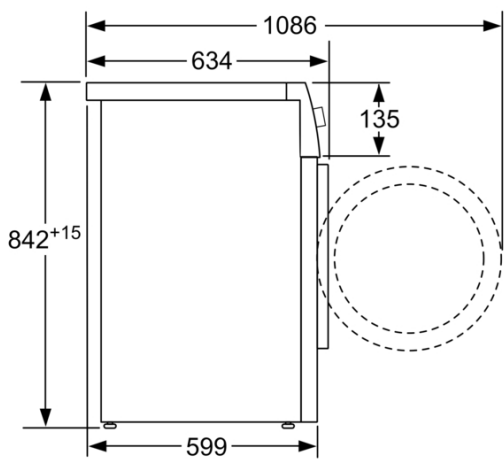
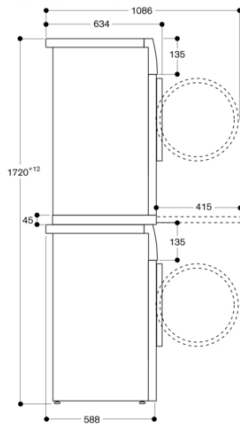
<b>Built-in / Free-standing</b>	Free-standing
<b>Removable top</b>	No
<b>Door hinge</b>	Right reversible
<b>Color / Material body</b>	White
<b>Length electrical supply cord</b>	145.0
<b>Height with worktop</b>	842
<b>Dimensions of the product</b>	842 x 598 x 599
<b>Net weight</b>	57.079
<b>Drum volume</b>	112
<b>Fluorinated greenhouse gases</b>	No
<b>Type of refrigerant</b>	R290
<b>Hermetically sealed equipment</b>	Yes
<b>Quantity of fluorinated gases</b>	0.149
<b>The quantity expressed in CO2 equivalent</b>	0.000
<b>Power consumption standby/network: Please check the user manual for how to switch off the WiFi module.</b>	
<b>Time auto-standby/network</b>	
<b>Connection rating</b>	1000
<b>Fuse protection</b>	10
<b>Voltage</b>	220-240
<b>Frequency</b>	50
<b>Approval certificates</b>	CE, Eurasian, G-Mark, Ukraine, Ukraine grounding sign, VDE
<b>Drying process</b>	automatic
<b>Capacity cotton - NEW (2010/30/EC)</b>	8.0
<b>Energy efficiency rating</b>	A+++
<b>Energy consumption electric dryer, full load - NEW (2010/30/EC)</b>	1.46
<b>Standard cotton programme time at full load</b>	148
<b>Energy consumption electric dryer, partial load - NEW (2010/30/EC)</b>	0.82
<b>Standard cotton programme time at partial load</b>	94
<b>Weighted annual energy consumption, electric dryer - NEW (2010/30/EC)</b>	176.0
<b>Power consumption in off-mode - NEW (2010/30/EC)</b>	0.13
<b>Power consumption in left-on mode - NEW (2010/30/EC)</b>	0.13
<b>Duration of the left-on mode - NEW (2012/30/EC)</b>	30
<b>Weighted programme time</b>	117
<b>Condensation efficiency class - NEW (2010/30/EC)</b>	B
<b>Average condensation efficiency full load (%)</b>	87
<b>Average condensation efficiency partial load (%)</b>	89
<b>Weighted condensation efficiency (%)</b>	88
<b>Consumption and connection features</b>	

2021-12-29  
Page 1



measurements in mm

Side view of WT 260 above WM 260  
with connection kit WA 032 001



measurements in mm