



WT260110

WA027400:

Stacking kit with pull-out shelf

Tumble dryer with heat pump 200 series 9 kg

WT260110

Heat pump technology.
Self-cleaning condenser for automatic fluff removal.
Very silent drying with only 62 db.
Steam Refresh: refreshes and removes creases from dry laundry
Smart Dry automatically selects the right dryer program based on the last washing program.

Handling

Illuminated rotary knob with integrated On-Off switch.
Touch key operation.
TFT display with clear text and symbols.
Programme sequence and remaining time display.
Time delay up to 24 hours.
Multiple signal tones.

Technical features

Moisture and time controlled programmes.
Heat pump technology.
Self-cleaning heat exchanger.
Refresh function without previous washing cycle.
Anti-crease cycle at programme end.
Top-up function.
Child lock.

Selected digital services (Gaggenua Home Connect)

Smart Energy Management.
Smart Dry (Washing machine automatically selects correct dryer program).
Remote control and monitoring.
Home network integration for digital services (Home Connect) wireless via WiFi.
The use of the Home Connect functionality depends on the Home Connect services, which are not available in every country. For further information please check: home-connect.com.

Programmes

Cottons.
Easy Care.
Mix.
Timed program warm.
Wool in Basket.
Business Refresh.
5 Shirts/Blouses Refresh.
1 Shirt/Blouse Refresh.
Shirts.
Towels.
Super 40'.
Hygiene.
Additional Programmes: Smart Dry, Blankets, Dessous, Synthetics, Down, Wool Finish.
Options: Remote Start, Anti Crease, Easy Iron, Drying Target, Drying Target Adjustment, Spin Speed, Gentle Dry, Memory Function.

Features

Stainless steel drum with honeycomb structure.
Dry wool without shrinking or matting thanks to the included basket for woollens.
Volume capacity from 1 to 9 kg.

Drum interior lighting.

Consumption data

Energy efficiency class A+++ at a range of energy efficiency classes from A+++ to D.

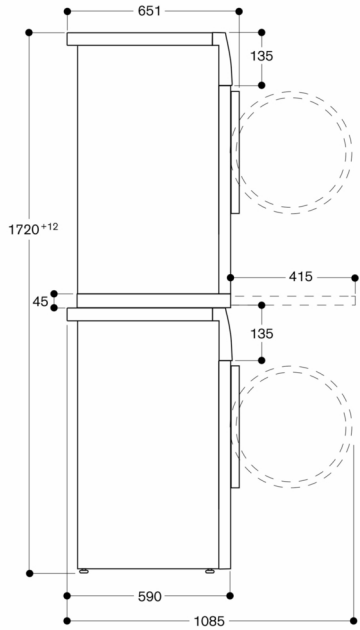
Planning notes

Combines perfectly with washing machine WM 260 164.
Right-hinged, reversible.
Large porthole with 165 ° opening angle.
Height-adjustable feet.
Height for slide-under installation: 84.2 cm.
Stackable above washing machine WM 260 164 in combination with special accessory. With pull-out shelf 17001528, without pull-out shelf 17001527.

Connection

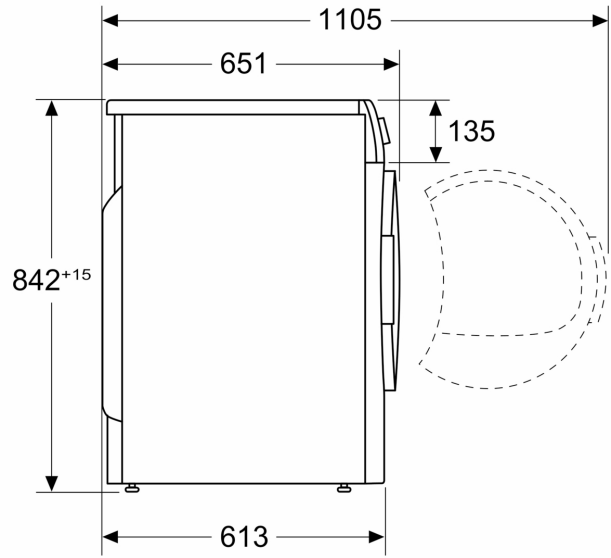
Total connected load 0.6 KW.
Connection cable 1.45 m with plug.

Side view of WT 260 above WM 260 with connection kit accessory



measurements in mm

Measurements in mm



Measurements in mm

